

CLDND2 (C-12): sc-241359

BACKGROUND

CLDND2 (claudin domain containing 2) is a 167 amino acid multi-pass membrane protein that belongs to the PMP-22/EMP/MP20 family and is encoded by a gene that maps to human chromosome 19q13.41. Consisting of around 63 million bases with over 1,400 genes, chromosome 19 makes up over 2% of human genomic DNA. Chromosome 19 includes a diversity of interesting genes and is recognized for having the greatest gene density of the human chromosomes. It is the genetic home for a number of immunoglobulin superfamily members including the killer cell and leukocyte Ig-like receptors, a number of ICAMs, the CEACAM and PSG family, and Fc receptors. Key genes for eye color and hair color also map to chromosome 19. Peutz-Jeghers syndrome, spinocerebellar ataxia type 6, the stroke disorder CADASIL, hypercholesterolemia and Insulin-dependent diabetes have been linked to chromosome 19.

REFERENCES

- Zimmermann, W., et al. 1988. Chromosomal localization of the carcinoembryonic antigen gene family and differential expression in various tumors. *Cancer Res.* 48: 2550-2554.
- LaPoint, S.F., et al. 2000. Cerebral autosomal dominant arteriopathy with subcortical infarcts and leukoencephalopathy (CADASIL). *Adv. Anat. Pathol.* 7: 307-321.
- Trettel, F., et al. 2000. A fine physical map of the CACNA1A gene region on 19p13.1-p13.2 chromosome. *Gene* 241: 45-50.
- Buchet-Poyau, K., et al. 2002. Search for the second Peutz-Jeghers syndrome locus: exclusion of the STK13, PRKCG, KLK10, and PSCD2 genes on chromosome 19 and the STK11IP gene on chromosome 2. *Cytogenet. Genome Res.* 97: 171-178.
- Moodie, S.J., et al. 2002. Analysis of candidate genes on chromosome 19 in coeliac disease: an association study of the KIR and LILR gene clusters. *Eur. J. Immunogenet.* 29: 287-291.
- Grimwood, J., et al. 2004. The DNA sequence and biology of human chromosome 19. *Nature* 428: 529-535.
- Parham, P. 2005. Immunogenetics of killer cell immunoglobulin-like receptors. *Mol. Immunol.* 42: 459-462.

CHROMOSOMAL LOCATION

Genetic locus: CLDND2 (human) mapping to 19q13.41; Cldnd2 (mouse) mapping to 7 B4.

SOURCE

CLDND2 (C-12) is an affinity purified goat polyclonal antibody raised against a peptide mapping at the C-terminus of CLDND2 of human origin.

PRODUCT

Each vial contains 200 µg IgG in 1.0 ml of PBS with < 0.1% sodium azide and 0.1% gelatin.

Blocking peptide available for competition studies, sc-241359 P, (100 µg peptide in 0.5 ml PBS containing < 0.1% sodium azide and 0.2% BSA).

APPLICATIONS

CLDND2 (C-12) is recommended for detection of CLDND2 of mouse, rat and human origin by Western Blotting (starting dilution 1:200, dilution range 1:100-1:1000), immunoprecipitation [1-2 µg per 100-500 µg of total protein (1 ml of cell lysate)], immunofluorescence (starting dilution 1:50, dilution range 1:50-1:500) and solid phase ELISA (starting dilution 1:30, dilution range 1:30-1:3000); non cross-reactive with CLDND1.

CLDND2 (C-12) is also recommended for detection of CLDND2 in additional species, including equine, canine, bovine and porcine.

Suitable for use as control antibody for CLDND2 siRNA (h): sc-97501, CLDND2 siRNA (m): sc-142375, CLDND2 shRNA Plasmid (h): sc-97501-SH, CLDND2 shRNA Plasmid (m): sc-142375-SH, CLDND2 shRNA (h) Lentiviral Particles: sc-97501-V and CLDND2 shRNA (m) Lentiviral Particles: sc-142375-V.

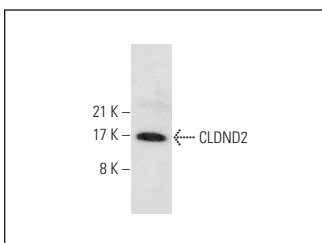
Molecular Weight of CLDND2: 18 kDa.

Positive Controls: Jurkat whole cell lysate: sc-2204.

RECOMMENDED SECONDARY REAGENTS

To ensure optimal results, the following support (secondary) reagents are recommended: 1) Western Blotting: use donkey anti-goat IgG-HRP: sc-2020 (dilution range: 1:2000-1:100,000) or Cruz Marker™ compatible donkey anti-goat IgG-HRP: sc-2033 (dilution range: 1:2000-1:5000), Cruz Marker™ Molecular Weight Standards: sc-2035, TBS Blotto A Blocking Reagent: sc-2333 and Western Blotting Luminol Reagent: sc-2048. 2) Immunoprecipitation: use Protein A/G PLUS-Agarose: sc-2003 (0.5 ml agarose/2.0 ml). 3) Immunofluorescence: use donkey anti-goat IgG-FITC: sc-2024 (dilution range: 1:100-1:400) or donkey anti-goat IgG-TR: sc-2783 (dilution range: 1:100-1:400) with UltraCruz™ Mounting Medium: sc-24941.

DATA



CLDND2 (C-12): sc-241359. Western blot analysis of CLDND2 expression in Jurkat whole cell lysate.

STORAGE

Store at 4° C, ****DO NOT FREEZE****. Stable for one year from the date of shipment. Non-hazardous. No MSDS required.

RESEARCH USE

For research use only, not for use in diagnostic procedures.