

# FAM55A (M-12): sc-241450

## BACKGROUND

With approximately 135 million base pairs and 1,400 genes, chromosome 11 makes up around 4% of human genomic DNA and is considered a gene and disease association dense chromosome. The chromosome 11 encoded *Atm* gene is important for regulation of cell cycle arrest and apoptosis following double strand DNA breaks. *Atm* mutation leads to the disorder known as ataxia-telangiectasia. The blood disorders Sickle cell anemia and  $\beta$  thalassemia are caused by HBB gene mutations. Wilms' tumors, WAGR syndrome and Denys-Drash syndrome are associated with mutations of the WT1 gene. Jervell and Lange-Nielsen syndrome, Jacobsen syndrome, Niemann-Pick disease, hereditary angioedema and Smith-Lemli-Opitz syndrome are also associated with defects in chromosome 11. The FAM55A gene product has been provisionally designated FAM55A pending further characterization.

## REFERENCES

- Grossfeld, P.D., et al. 2004. The 11q terminal deletion disorder: a prospective study of 110 cases. *Am. J. Med. Genet. A* 129: 51-61.
- Loussouarn, G., et al. 2006. KCNQ1 K<sup>+</sup> channel-mediated cardiac channelopathies. *Methods Mol. Biol.* 337: 167-183.
- Taylor, T.D., et al. 2006. Human chromosome 11 DNA sequence and analysis including novel gene identification. *Nature* 440: 497-500.
- Zehelein, J., et al. 2006. Skipping of Exon 1 in the KCNQ1 gene causes Jervell and Lange-Nielsen syndrome. *J. Biol. Chem.* 281: 35397-35403.
- Ataga, K.I., et al. 2007.  $\beta$ -thalassaemia and sickle cell anaemia as paradigms of hypercoagulability. *Br. J. Haematol.* 139: 3-13.
- Berger, A.C., et al. 2007. The subcellular localization of the Niemann-Pick Type C proteins depends on the adaptor complex AP-3. *J. Cell Sci.* 120: 3640-3652.
- Lee, J.H., et al. 2007. Activation and regulation of ATM kinase activity in response to DNA double-strand breaks. *Oncogene* 26: 7741-7748.
- O'Connor, M.J., et al. 2007. Targeted cancer therapies based on the inhibition of DNA strand break repair. *Oncogene* 26: 7816-7824.
- Kaste, S.C., et al. 2008. Wilms tumour: prognostic factors, staging, therapy and late effects. *Pediatr. Radiol.* 38: 2-17.

## CHROMOSOMAL LOCATION

Genetic locus: *Fam55a* (mouse) mapping to 9 A5.3.

## SOURCE

FAM55A (M-12) is an affinity purified goat polyclonal antibody raised against a peptide mapping near the C-terminus of FAM55A of mouse origin.

## PRODUCT

Each vial contains 200  $\mu$ g IgG in 1.0 ml of PBS with < 0.1% sodium azide and 0.1% gelatin.

Blocking peptide available for competition studies, sc-241450 P, (100  $\mu$ g peptide in 0.5 ml PBS containing < 0.1% sodium azide and 0.2% BSA).

## APPLICATIONS

FAM55A (M-12) is recommended for detection of FAM55A of mouse and rat origin by Western Blotting (starting dilution 1:200, dilution range 1:100-1:1000), immunoprecipitation [1-2  $\mu$ g per 100-500  $\mu$ g of total protein (1 ml of cell lysate)], immunofluorescence (starting dilution 1:50, dilution range 1:50-1:500) and solid phase ELISA (starting dilution 1:30, dilution range 1:30-1:3000); non cross-reactive with FAM55B, FAM55C or FAM55D.

Suitable for use as control antibody for FAM55A siRNA (m): sc-144134, FAM55A shRNA Plasmid (m): sc-144134-SH and FAM55A shRNA (m) Lentiviral Particles: sc-144134-V.

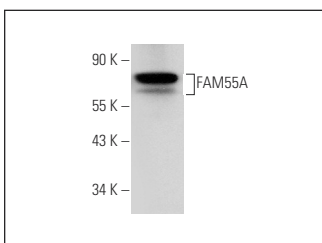
Molecular Weight of FAM55A: 63 kDa.

Positive Controls: rat colon tissue extract.

## RECOMMENDED SECONDARY REAGENTS

To ensure optimal results, the following support (secondary) reagents are recommended: 1) Western Blotting: use donkey anti-goat IgG-HRP: sc-2020 (dilution range: 1:2000-1:100,000) or Cruz Marker™ compatible donkey anti-goat IgG-HRP: sc-2033 (dilution range: 1:2000-1:5000), Cruz Marker™ Molecular Weight Standards: sc-2035, TBS Blotto A Blocking Reagent: sc-2333 and Western Blotting Luminol Reagent: sc-2048. 2) Immunoprecipitation: use Protein A/G PLUS-Agarose: sc-2003 (0.5 ml agarose/2.0 ml). 3) Immunofluorescence: use donkey anti-goat IgG-FITC: sc-2024 (dilution range: 1:100-1:400) or donkey anti-goat IgG-TR: sc-2783 (dilution range: 1:100-1:400) with UltraCruz™ Mounting Medium: sc-24941.

## DATA



FAM55A (M-12): sc-241450. Western blot analysis of FAM55A expression in rat colon tissue extract.

## STORAGE

Store at 4° C, \*\*DO NOT FREEZE\*\*. Stable for one year from the date of shipment. Non-hazardous. No MSDS required.

## RESEARCH USE

For research use only, not for use in diagnostic procedures.

## PROTOCOLS

See our web site at [www.scbt.com](http://www.scbt.com) or our catalog for detailed protocols and support products.