

PQLC2 (Q-12): sc-241636

BACKGROUND

PQLC2 (PQ loop repeat containing 2) is a 291 amino acid multi-pass membrane protein that contains two PQ-loop domains and exists as three alternatively spliced isoforms. PQLC2 is encoded by a gene that maps to human chromosome 1p36.13. Chromosome 1, the largest human chromosome, makes up 8% of the human genome and contains about 260 million base pairs, which encode 3,000 genes. Chromosome 1 houses a large number of disease-associated genes, including those that are involved in familial adenomatous polyposis, Stickler syndrome, Parkinson's disease, Gaucher disease, schizophrenia and Usher syndrome. Aberrations in chromosome 1 are found in a variety of cancers, including head and neck cancer, malignant melanoma and multiple myeloma.

REFERENCES

- Blackwood, D.H., et al. 2001. Schizophrenia and affective disorders— cosegregation with a translocation at chromosome 1q42 that directly disrupts brain-expressed genes: clinical and P300 findings in a family. *Am. J. Hum. Genet.* 69: 428-433.
- Weise, A., et al. 2005. New insights into the evolution of chromosome 1. *Cytogenet. Genome Res.* 108: 217-222.
- Marzin, Y., et al. 2006. Chromosome 1 abnormalities in multiple myeloma. *Anticancer Res.* 26: 953-959.
- Antoshechkin, A., et al. 2007. Analysis of effects of the herbal preparation Circulat on gene expression levels in cultured human fibroblasts. *Phytother. Res.* 21: 777-789.
- Lindstrand, A., et al. 2008. Molecular cytogenetic characterization of a constitutional, highly complex intrachromosomal rearrangement of chromosome 1, with 14 breakpoints and a 0.5 Mb submicroscopic deletion. *Am. J. Med. Genet. A* 146A: 3217-3222.
- Stacey, S.N., et al. 2008. Common variants on 1p36 and 1q42 are associated with cutaneous basal cell carcinoma but not with melanoma or pigmentation traits. *Nat. Genet.* 40: 1313-1318.
- Moyer, B.D., et al. 2009. Expression of genes encoding multi-transmembrane proteins in specific primate taste cell populations. *PLoS ONE* 4: e7682.
- Cheung, H.H., et al. 2010. Genome-wide DNA methylation profiling reveals novel epigenetically regulated genes and non-coding RNAs in human testicular cancer. *Br. J. Cancer* 102: 419-427.
- Najfeld, V., et al. 2010. Jumping translocations of the long arms of chromosome 1 in myeloid malignancies is associated with a high risk of transformation to acute myeloid leukaemia. *Br. J. Haematol.* 151: 288-291.

CHROMOSOMAL LOCATION

Genetic locus: Pqlc2 (rat) mapping to 5q36.

SOURCE

PQLC2 (Q-12) is an affinity purified goat polyclonal antibody raised against a peptide mapping within an internal region of PQLC2 of rat origin.

PRODUCT

Each vial contains 200 µg IgG in 1.0 ml of PBS with < 0.1% sodium azide and 0.1% gelatin.

Blocking peptide available for competition studies, sc-241636 P, (100 µg peptide in 0.5 ml PBS containing < 0.1% sodium azide and 0.2% BSA).

APPLICATIONS

PQLC2 (Q-12) is recommended for detection of PQLC2 of rat origin by Western Blotting (starting dilution 1:200, dilution range 1:100-1:1000), immunoprecipitation [1-2 µg per 100-500 µg of total protein (1 ml of cell lysate)], immunofluorescence (starting dilution 1:50, dilution range 1:50-1:500) and solid phase ELISA (starting dilution 1:30, dilution range 1:30-1:3000); non cross-reactive with PQLC1 or PQLC3.

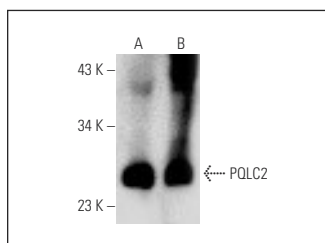
Molecular Weight of PQLC2: 32 kDa.

Positive Controls: rat liver extract: sc-2395 or rat skeletal muscle extract: sc-364810.

RECOMMENDED SECONDARY REAGENTS

To ensure optimal results, the following support (secondary) reagents are recommended: 1) Western Blotting: use donkey anti-goat IgG-HRP: sc-2020 (dilution range: 1:2000-1:100,000) or Cruz Marker™ compatible donkey anti-goat IgG-HRP: sc-2033 (dilution range: 1:2000-1:5000), Cruz Marker™ Molecular Weight Standards: sc-2035, TBS Blotto A Blocking Reagent: sc-2333 and Western Blotting Luminol Reagent: sc-2048. 2) Immunoprecipitation: use Protein A/G PLUS-Agarose: sc-2003 (0.5 ml agarose/2.0 ml). 3) Immunofluorescence: use donkey anti-goat IgG-FITC: sc-2024 (dilution range: 1:100-1:400) or donkey anti-goat IgG-TR: sc-2783 (dilution range: 1:100-1:400) with UltraCruz™ Mounting Medium: sc-24941.

DATA



PQLC2 (Q-12): sc-241636. Western blot analysis of PQLC2 expression in rat skeletal muscle (A) and rat liver (B) tissue extracts.

STORAGE

Store at 4° C, ****DO NOT FREEZE****. Stable for one year from the date of shipment. Non-hazardous. No MSDS required.

RESEARCH USE

For research use only, not for use in diagnostic procedures.