

PTPRCAP (D-13): sc-241650

BACKGROUND

Protein tyrosine phosphorylation influences cell responses including growth, proliferation, differentiation, migration, metabolism and survival. Tyrosine phosphorylation is a reversible process in balance with the activities of protein tyrosine kinases and protein tyrosine phosphatases (PTP). The PTP superfamily includes transmembrane receptor-like PTPs, cytosolic phosphotyrosine specific PTPs, Dual Specificity PTPs (DSP), and Multiple Specificity PTP (MSPs). PTPRCAP (protein tyrosine phosphatase, receptor type, C-associated protein), also designated LPAP or CD45-AP, is 206 amino acid single-pass membrane protein that specifically associated with CD45, a key regulator of T- and B-lymphocyte activation. PTPRCAP stabilizes the association of CD45 with sub in activating the oncogenic Src family kinases.

REFERENCES

- Schraven, B., et al. 1994. LPAP, a novel 32 kDa phosphoprotein that interacts with CD45 in human lymphocytes. *J. Biol. Chem.* 269: 29102-29111.
- Bruyns, E., et al. 1995. Identification of the sites of interaction between lymphocyte phosphatase-associated phosphoprotein (LPAP) and CD45. *J. Biol. Chem.* 270: 31372-31376.
- Fortin, M., et al. 2002. Apoptosis mediated through CD45 is independent of its phosphatase activity and association with leukocyte phosphatase-associated phosphoprotein. *J. Immunol.* 168: 6084-6089.
- Nicholas, R.S., et al. 2003. The role of the PTPRC (CD45) mutation in the development of multiple sclerosis in the North West region of the United Kingdom. *J. Neurol. Neurosurg. Psychiatr.* 74: 944-945.
- Takeda, A., et al. 2004. CD45-associated protein inhibits CD45 dimerization and upregulates its protein tyrosine phosphatase activity. *Blood* 103: 3440-3447.
- Cocco, E., et al. 2004. PTPRC (CD45) C77G mutation does not contribute to multiple sclerosis susceptibility in Sardinian patients. *J. Neurol.* 251: 1085-1088.
- Maljaei, S.H., et al. 2005. Usefulness of CD45 density in the diagnosis of B cell chronic lymphoproliferative disorders. *Indian J. Med. Sci.* 59: 187-194.
- Leitenberg, D., et al. 2007. CD45-associated protein promotes the response of primary CD4 T cells to low-potency T cell receptor (TCR) stimulation and facilitates CD45 association with CD3/TCR and Lck. *Immunology* 121: 545-554.

CHROMOSOMAL LOCATION

Genetic locus: PTPRCAP (human) mapping to 11q13.2.

SOURCE

PTPRCAP (D-13) is an affinity purified goat polyclonal antibody raised against a peptide mapping within an internal region of PTPRCAP of human origin.

STORAGE

Store at 4° C, ****DO NOT FREEZE****. Stable for one year from the date of shipment. Non-hazardous. No MSDS required.

PRODUCT

Each vial contains 200 µg IgG in 1.0 ml of PBS with < 0.1% sodium azide and 0.1% gelatin.

Blocking peptide available for competition studies, sc-241650 P, (100 µg peptide in 0.5 ml PBS containing < 0.1% sodium azide and 0.2% BSA).

APPLICATIONS

PTPRCAP (D-13) is recommended for detection of PTPRCAP of human origin by Western Blotting (starting dilution 1:200, dilution range 1:100-1:1000), immunoprecipitation [1-2 µg per 100-500 µg of total protein (1 ml of cell lysate)], immunofluorescence (starting dilution 1:50, dilution range 1:50-1:500) and solid phase ELISA (starting dilution 1:30, dilution range 1:30-1:3000).

Suitable for use as control antibody for PTPRCAP siRNA (h): sc-96314, PTPRCAP shRNA Plasmid (h): sc-96314-SH and PTPRCAP shRNA (h) Lentiviral Particles: sc-96314-V.

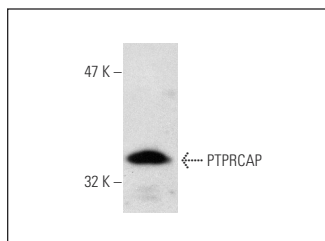
Molecular Weight of PTPRCAP: 32 kDa.

Positive Controls: Jurkat whole cell lysate: sc-2204.

RECOMMENDED SECONDARY REAGENTS

To ensure optimal results, the following support (secondary) reagents are recommended: 1) Western Blotting: use donkey anti-goat IgG-HRP: sc-2020 (dilution range: 1:2000-1:100,000) or Cruz Marker™ compatible donkey anti-goat IgG-HRP: sc-2033 (dilution range: 1:2000-1:5000), Cruz Marker™ Molecular Weight Standards: sc-2035, TBS Blotto A Blocking Reagent: sc-2333 and Western Blotting Luminol Reagent: sc-2048. 2) Immunoprecipitation: use Protein A/G PLUS-Agarose: sc-2003 (0.5 ml agarose/2.0 ml). 3) Immunofluorescence: use donkey anti-goat IgG-FITC: sc-2024 (dilution range: 1:100-1:400) or donkey anti-goat IgG-TR: sc-2783 (dilution range: 1:100-1:400) with UltraCruz™ Mounting Medium: sc-24941.

DATA



PTPRCAP (D-13): sc-241650. Western blot analysis of PTPRCAP expression in Jurkat whole cell lysate.

RESEARCH USE

For research use only, not for use in diagnostic procedures.

PROTOCOLS

See our web site at www.scbt.com or our catalog for detailed protocols and support products.