

ATXN2L (Q-17): sc-241873

BACKGROUND

ATXN2L (ataxin-2-like protein) is a 1,075 amino acid peripheral membrane protein that belongs to the ataxin-2 family. Expressed at high levels in thymus, lymph node, spleen, fetal kidney and adult testis, ATXN2L interacts with c-Mpl and EpoR, and dissociates after ligand stimulation. ATXN2L associates with the thrombopoietin receptor, c-Mpl, and is a component of a cytokine signaling cascade following receptor activation. ATXN2L contains three domains that share significant homology with Ataxin-2. The N terminus of ATXN2L has eight interrupted glutamines replacing the polyglutamine tract of Ataxin-2. The ATXN2L gene is conserved in chimpanzee, canine, bovine, mouse, rat, zebrafish, *M. grisea* and *N. crassa*, exists as seven alternatively spliced isoforms, and maps to human chromosome 16p11.2. Deletions to the 16p11.2 region are associated with early-onset IBD susceptibility, adult-onset Crohn's disease and adult-onset ulcerative colitis.

REFERENCES

1. Pulst, S.M., et al. 1996. Moderate expansion of a normally biallelic trinucleotide repeat in spinocerebellar ataxia type 2. *Nat. Genet.* 14: 269-276.
2. Meunier, C., et al. 2002. Cloning and characterization of a family of proteins associated with Mpl. *J. Biol. Chem.* 277: 9139-9147.
3. Figueroa, K.P., et al. 2003. Identification and expression of the gene for human ataxin-2-related protein on chromosome 16. *Exp. Neurol.* 184: 669-678.
4. Online Mendelian Inheritance in Man, OMIM™. 2003. Johns Hopkins University, Baltimore, MD. MIM Number: 607931. World Wide Web URL: <http://www.ncbi.nlm.nih.gov/omim/>
5. Nonhoff, U., et al. 2007. Ataxin-2 interacts with the DEAD/H-box RNA helicase DDX6 and interferes with P-bodies and stress granules. *Mol. Biol. Cell* 18: 1385-1396.
6. Imielinski, M., et al. 2009. Common variants at five new loci associated with early-onset inflammatory bowel disease. *Nat. Genet.* 41: 1335-1340.
7. Amre, D.K., et al. 2010. Association between genome-wide association studies reported SNPs and pediatric-onset Crohn's disease in Canadian children. *Hum. Genet.* 128: 131-135.

CHROMOSOMAL LOCATION

Genetic locus: ATXN2L (human) mapping to 16p11.2; Atxn2l (mouse) mapping to 7 F3.

SOURCE

ATXN2L (Q-17) is an affinity purified goat polyclonal antibody raised against a peptide mapping within an internal region of ATXN2L of human origin.

PRODUCT

Each vial contains 200 µg IgG in 1.0 ml of PBS with < 0.1% sodium azide and 0.1% gelatin.

Blocking peptide available for competition studies, sc-241873 P, (100 µg peptide in 0.5 ml PBS containing < 0.1% sodium azide and 0.2% BSA).

APPLICATIONS

ATXN2L (Q-17) is recommended for detection of ATXN2L of mouse and human origin by Western Blotting (starting dilution 1:200, dilution range 1:100-1:1000), immunoprecipitation [1-2 µg per 100-500 µg of total protein (1 ml of cell lysate)], immunofluorescence (starting dilution 1:50, dilution range 1:50-1:500) and solid phase ELISA (starting dilution 1:30, dilution range 1:30-1:3000).

ATXN2L (Q-17) is also recommended for detection of ATXN2L in additional species, including equine, canine, bovine and porcine.

Suitable for use as control antibody for ATXN2L siRNA (h): sc-93060, ATXN2L siRNA (m): sc-141377, ATXN2L shRNA Plasmid (h): sc-93060-SH, ATXN2L shRNA Plasmid (m): sc-141377-SH, ATXN2L shRNA (h) Lentiviral Particles: sc-93060-V and ATXN2L shRNA (m) Lentiviral Particles: sc-141377-V.

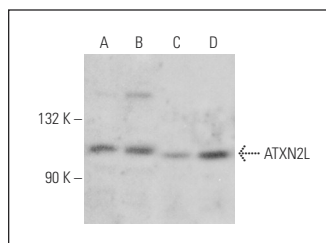
Molecular Weight of ATXN2L: 113/112/116/110/103/43 kDa.

Positive Controls: HEK293 whole cell lysate: sc-45136, Jurkat whole cell lysate: sc-2204 or K-562 whole cell lysate: sc-2203.

RECOMMENDED SECONDARY REAGENTS

To ensure optimal results, the following support (secondary) reagents are recommended: 1) Western Blotting: use donkey anti-goat IgG-HRP: sc-2020 (dilution range: 1:2000-1:100,000) or Cruz Marker™ compatible donkey anti-goat IgG-HRP: sc-2033 (dilution range: 1:2000-1:5000), Cruz Marker™ Molecular Weight Standards: sc-2035, TBS Blotto A Blocking Reagent: sc-2333 and Western Blotting Luminol Reagent: sc-2048. 2) Immunoprecipitation: use Protein A/G PLUS-Agarose: sc-2003 (0.5 ml agarose/2.0 ml). 3) Immunofluorescence: use donkey anti-goat IgG-FITC: sc-2024 (dilution range: 1:100-1:400) or donkey anti-goat IgG-TR: sc-2783 (dilution range: 1:100-1:400) with UltraCruz™ Mounting Medium: sc-24941.

DATA



ATXN2L (Q-17): sc-241873. Western blot analysis of ATXN2L expression in A2058 (A), HEK293 (B), Jurkat (C) and K-562 (D) whole cell lysates.

STORAGE

Store at 4° C, **DO NOT FREEZE**. Stable for one year from the date of shipment. Non-hazardous. No MSDS required.

RESEARCH USE

For research use only, not for use in diagnostic procedures.