

BATF2 (Q-17): sc-241891

BACKGROUND

BATF2 (basic leucine zipper transcription factor, ATF-like 2) is a 274 amino acid protein that localizes to the nucleus and contains one bZIP domain, suggesting that it may be involved in transcriptional regulation. The gene encoding BATF2, which is expressed as multiple alternatively spliced isoforms, is located on human chromosome 11. With approximately 135 million base pairs and 1,400 genes, chromosome 11 comprises approximately 4% of human genomic DNA and is considered a gene and disease association dense chromosome. The chromosome 11 encoded *Atm* gene is important for regulation of cell cycle arrest and apoptosis following double strand DNA breaks. *Atm* mutation leads to the disorder known as ataxia-telangiectasia. The blood disorders Sickle cell anemia and thalassemia are caused by HBB gene mutations, while Wilms' tumors, WAGR syndrome and Denys-Drash syndrome are associated with mutations of the *WT1* gene. Jervell and Lange-Nielsen syndrome, Jacobsen syndrome, Niemann-Pick disease, hereditary angioedema and Smith-Lemli-Opitz syndrome are also associated with defects in chromosome 11-encoded genes.

REFERENCES

1. Polyak, K., Xia, Y., Zweier, J.L., Kinzler, K.W. and Vogelstein, B. 1997. A model for p53-induced apoptosis. *Nature* 389: 300-305.
2. Katoh, M. and Katoh, M. 2004. Identification and characterization of human TP53I5 and mouse Tp53i5 genes in silico. *Int. J. Oncol.* 25: 225-230.
3. Grossfeld, P.D., Mattina, T., Lai, Z., Favier, R., Jones, K.L., Cotter, F. and Jones, C. 2004. The 11q terminal deletion disorder: a prospective study of 110 cases. *Am. J. Med. Genet. A* 129: 51-61.
4. Lousouarn, G., Baró, I. and Escande, D. 2006. KCNQ1 K⁺ channel-mediated cardiac channelopathies. *Methods Mol. Biol.* 337: 167-183.
5. Taylor, T.D., Noguchi, H., Totoki, Y., Toyoda, A., Kuroki, Y., Dewar, K., Lloyd, C., Itoh, T., Takeda, T., Kim, D.W., She, X., Barlow, K.F., Bloom, T., Bruford, E., Chang, J.L., Cuomo, C.A., Eichler, E., Fitzgerald, M.G., Jaffe, D.B., LaButti, K., Nicol, R., Park, H.S., et al. 2006. Human chromosome 11 DNA sequence and analysis including novel gene identification. *Nature* 440: 497-500.
6. Zehelein, J., Kathoefer, S., Khalil, M., Alter, M., Thomas, D., Brockmeier, K., Ulmer, H.E., Katus, H.A. and Koenen, M. 2006. Skipping of exon 1 in the KCNQ1 gene causes Jervell and Lange-Nielsen syndrome. *J. Biol. Chem.* 281: 35397-35403.

CHROMOSOMAL LOCATION

Genetic locus: *Batf2* (mouse) mapping to 19 A.

SOURCE

BATF2 (Q-17) is an affinity purified goat polyclonal antibody raised against a peptide mapping within an internal region of BATF2 of mouse origin.

STORAGE

Store at 4° C, ****DO NOT FREEZE****. Stable for one year from the date of shipment. Non-hazardous. No MSDS required.

PRODUCT

Each vial contains 200 µg IgG in 1.0 ml of PBS with < 0.1% sodium azide and 0.1% gelatin.

Blocking peptide available for competition studies, sc-241891 P, (100 µg peptide in 0.5 ml PBS containing < 0.1% sodium azide and 0.2% BSA).

APPLICATIONS

BATF2 (Q-17) is recommended for detection of BATF2 of mouse and rat origin by Western Blotting (starting dilution 1:200, dilution range 1:100-1:1000), immunoprecipitation [1-2 µg per 100-500 µg of total protein (1 ml of cell lysate)], immunofluorescence (starting dilution 1:50, dilution range 1:50-1:500) and solid phase ELISA (starting dilution 1:30, dilution range 1:30-1:3000).

Suitable for use as control antibody for BATF2 siRNA (m): sc-141473, BATF2 shRNA Plasmid (m): sc-141473-SH and BATF2 shRNA (m) Lentiviral Particles: sc-141473-V.

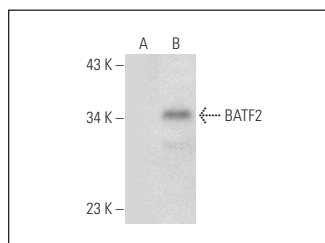
Molecular Weight of BATF2 isoforms: 29/20 kDa.

Positive Controls: BATF2 (m): 293T Lysate: sc-118686.

RECOMMENDED SECONDARY REAGENTS

To ensure optimal results, the following support (secondary) reagents are recommended: 1) Western Blotting: use donkey anti-goat IgG-HRP: sc-2020 (dilution range: 1:2000-1:100,000) or Cruz Marker™ compatible donkey anti-goat IgG-HRP: sc-2033 (dilution range: 1:2000-1:5000), Cruz Marker™ Molecular Weight Standards: sc-2035, TBS Blotto A Blocking Reagent: sc-2333 and Western Blotting Luminol Reagent: sc-2048. 2) Immunoprecipitation: use Protein A/G PLUS-Agarose: sc-2003 (0.5 ml agarose/2.0 ml). 3) Immunofluorescence: use donkey anti-goat IgG-FITC: sc-2024 (dilution range: 1:100-1:400) or donkey anti-goat IgG-TR: sc-2783 (dilution range: 1:100-1:400) with UltraCruz™ Mounting Medium: sc-24941.

DATA



BATF2 (Q-17): sc-241891. Western blot analysis of BATF2 expression in non-transfected: sc-117752 (A) and mouse BATF2 transfected: sc-118686 (B) 293T whole cell lysates.

RESEARCH USE

For research use only, not for use in diagnostic procedures.