

BTN2A1 (V-15): sc-241942

BACKGROUND

Butyrophilin is a glycoprotein that is specifically expressed on the apical surface of mammary epithelial cells during lactation and becomes incorporated as an integral protein into the membrane of the milk fat globule during the budding and secretion of fat droplets into milk. BTN2A1 (butyrophilin subfamily 2 member A1), also known as BTF1, is a 527 amino acid single-pass type I membrane B box protein that plays a role in fatty-acid, sterol and lipid metabolism. A member of the immunoglobulin superfamily and BTN/MOG family, BTN2A1 exists as three alternatively spliced isoforms found at high levels in brain, muscle, spleen, pancreas, bone marrow and small intestine. BTN2A1 is expressed at moderate levels in kidney, liver and lung, and is encoded by a gene that maps to human chromosome 6p22.2.

REFERENCES

- Mather, I.H. and Jack, L.J. 1993. A review of the molecular and cellular biology of butyrophilin, the major protein of bovine milk fat globule membrane. *J. Dairy Sci.* 76: 3832-3850.
- Ogg, S.L., Komaragiri, M.V. and Mather, I.H. 1996. Structural organization and mammary-specific expression of the butyrophilin gene. *Mamm. Genome* 7: 900-905.
- Davey, H.W., Ogg, S.L., Husaini, Y., Snell, R.G., Korobko, I.V., Mather, I.H. and Wilkins, R.J. 1997. Structure and sequence of the bovine butyrophilin gene. *Gene* 199: 57-62.
- Tazi-Ahnini, R., Henry, J., Offer, C., Bouissou-Bouchouata, C., Mather, I.H. and Pontarotti, P. 1997. Cloning, localization, and structure of new members of the butyrophilin gene family in the juxta-telomeric region of the major histocompatibility complex. *Immunogenetics* 47: 55-63.
- Rhodes, D.A., Stammers, M., Malcherek, G., Beck, S. and Trowsdale, J. 2001. The cluster of BTN genes in the extended major histocompatibility complex. *Genomics* 71: 351-362.
- Robenek, H., Hofnagel, O., Buers, I., Lorkowski, S., Schnoor, M., Robenek, M.J., Heid, H., Troyer, D. and Severs, N.J. 2006. Butyrophilin controls milk fat globule secretion. *Proc. Natl. Acad. Sci. USA* 103: 10385-10390.
- Malcherek, G., Mayr, L., Roda-Navarro, P., Rhodes, D., Miller, N. and Trowsdale, J. 2007. The B7 homolog butyrophilin BTN2A1 is a novel ligand for DC-SIGN. *J. Immunol.* 179: 3804-3811.

CHROMOSOMAL LOCATION

Genetic locus: BTN2A1 (human) mapping to 6p22.2.

SOURCE

BTN2A1 (V-15) is an affinity purified goat polyclonal antibody raised against a peptide mapping within a cytoplasmic domain of BTN2A1 of human origin.

PRODUCT

Each vial contains 200 µg IgG in 1.0 ml of PBS with < 0.1% sodium azide and 0.1% gelatin.

Blocking peptide available for competition studies, sc-241942 P, (100 µg peptide in 0.5 ml PBS containing < 0.1% sodium azide and 0.2% BSA).

APPLICATIONS

BTN2A1 (V-15) is recommended for detection of BTN2A1 of human origin by Western Blotting (starting dilution 1:200, dilution range 1:100-1:1000), immunofluorescence (starting dilution 1:50, dilution range 1:50-1:500) and solid phase ELISA (starting dilution 1:30, dilution range 1:30-1:3000); non cross-reactive with BTN2A2 or BTN2A3.

Suitable for use as control antibody for BTN2A1 siRNA (h): sc-95278, BTN2A1 shRNA Plasmid (h): sc-95278-SH and BTN2A1 shRNA (h) Lentiviral Particles: sc-95278-V.

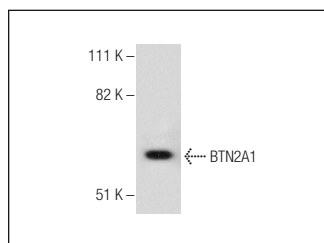
Molecular Weight of BTN2A1: 60 kDa.

Positive Controls: HEK293 whole cell lysate.

RECOMMENDED SECONDARY REAGENTS

To ensure optimal results, the following support (secondary) reagents are recommended: 1) Western Blotting: use donkey anti-goat IgG-HRP: sc-2020 (dilution range: 1:2000-1:100,000) or Cruz Marker™ compatible donkey anti-goat IgG-HRP: sc-2033 (dilution range: 1:2000-1:5000), Cruz Marker™ Molecular Weight Standards: sc-2035, TBS Blotto A Blocking Reagent: sc-2333 and Western Blotting Luminol Reagent: sc-2048. 2) Immunofluorescence: use donkey anti-goat IgG-FITC: sc-2024 (dilution range: 1:100-1:400) or donkey anti-goat IgG-TR: sc-2783 (dilution range: 1:100-1:400) with UltraCruz™ Mounting Medium: sc-24941.

DATA



BTN2A1 (V-15): sc-241942. Western blot analysis of BTN2A1 expression in HEK293 whole cell lysate.

STORAGE

Store at 4° C, ****DO NOT FREEZE****. Stable for one year from the date of shipment. Non-hazardous. No MSDS required.

RESEARCH USE

For research use only, not for use in diagnostic procedures.

PROTOCOLS

See our web site at www.scbt.com or our catalog for detailed protocols and support products.