

C10orf11 (P-18): sc-241949

BACKGROUND

C10orf11 (chromosome 10 open reading frame 11), also known as CDA017, is a 198 amino acid protein that contains 2 LRR (leucine-rich) repeats and is encoded by a gene that maps to human chromosome 10q22.2. Spanning nearly 135 million base pairs, chromosome 10 makes up approximately 4.5% of total DNA in cells and encodes nearly 1,200 genes. Several protein-coding genes, including those that encode for chemokines, cadherins, excision repair proteins, early growth response factors (Egrs) and fibroblast growth receptors (FGFRs), are located on chromosome 10. Defects in some of the genes that map to chromosome 10 are associated with Charcot-Marie-Tooth disease, Jackson-Weiss syndrome, Usher syndrome, nonsyndromic deafness, Wolman's syndrome, Cowden syndrome, multiple endocrine neoplasia type 2 and porphyria.

REFERENCES

- Jabs, E.W., Li, X., Scott, A.F., Meyers, G., Chen, W., Eccles, M., Mao, J.I., Charnas, L.R., Jackson, C.E. and Jaye, M. 1994. Jackson-Weiss and Crouzon syndromes are allelic with mutations in fibroblast growth factor receptor 2. *Nat. Genet.* 8: 275-279.
- Deloukas, P., French, L., Meitinger, T. and Moschonas, N.K. 2000. Report of the third international workshop on human chromosome 10 mapping and sequencing 1999. *Cytogenet. Cell Genet.* 90: 1-12.
- Gilbert, F. 2001. *Chromosome 10. Genet. Test.* 5: 69-82.
- Berger, P., Young, P. and Suter, U. 2002. Molecular cell biology of Charcot-Marie-Tooth disease. *Neurogenetics* 4: 1-15.
- Teresi, R.E., Zbuk, K.M., Pezzolesi, M.G., Waite, K.A. and Eng, C. 2007. Cowden syndrome-affected patients with PTEN promoter mutations demonstrate abnormal protein translation. *Am. J. Hum. Genet.* 81: 756-767.
- Cho, M.Y., Kim, H.S., Eng, C., Kim, D.S., Kang, S.J., Eom, M., Yi, S.Y. and Bronner, M.P. 2008. First report of ovarian dysgerminoma in Cowden syndrome with germline PTEN mutation and PTEN-related 10q loss of tumor heterozygosity. *Am. J. Surg. Pathol.* 32: 1258-1264.

CHROMOSOMAL LOCATION

Genetic locus: C10orf11 (human) mapping to 10q22.2; 1700112E06Rik (mouse) mapping to 14 A3.

SOURCE

C10orf11 (P-18) is an affinity purified goat polyclonal antibody raised against a peptide mapping within an internal region of C10orf11 of human origin.

PRODUCT

Each vial contains 200 µg IgG in 1.0 ml of PBS with < 0.1% sodium azide and 0.1% gelatin.

Blocking peptide available for competition studies, sc-241949 P, (100 µg peptide in 0.5 ml PBS containing < 0.1% sodium azide and 0.2% BSA).

RESEARCH USE

For research use only, not for use in diagnostic procedures.

APPLICATIONS

C10orf11 (P-18) is recommended for detection of C10orf11 of human origin, 1700112E06Rik of mouse origin and the corresponding rat homolog by Western Blotting (starting dilution 1:200, dilution range 1:100-1:1000), immunoprecipitation [1-2 µg per 100-500 µg of total protein (1 ml of cell lysate)], immunofluorescence (starting dilution 1:50, dilution range 1:50-1:500) and solid phase ELISA (starting dilution 1:30, dilution range 1:30-1:3000).

C10orf11 (P-18) is also recommended for detection of C10orf11 in additional species, including equine, canine, bovine and porcine.

Suitable for use as control antibody for C10orf11 siRNA (h): sc-90509, 1700112E06Rik siRNA (m): sc-108519, C10orf11 shRNA Plasmid (h): sc-90509-SH, 1700112E06Rik shRNA Plasmid (m): sc-108519-SH, C10orf11 shRNA (h) Lentiviral Particles: sc-90509-V and 1700112E06Rik shRNA (m) Lentiviral Particles: sc-108519-V.

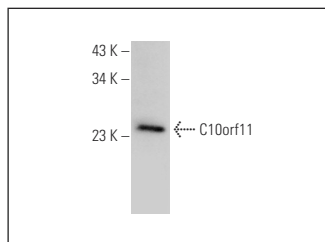
Molecular Weight of C10orf11: 23 kDa.

Positive Controls: human liver extract: sc-363766.

RECOMMENDED SECONDARY REAGENTS

To ensure optimal results, the following support (secondary) reagents are recommended: 1) Western Blotting: use donkey anti-goat IgG-HRP: sc-2020 (dilution range: 1:2000-1:100,000) or Cruz Marker™ compatible donkey anti-goat IgG-HRP: sc-2033 (dilution range: 1:2000-1:5000), Cruz Marker™ Molecular Weight Standards: sc-2035, TBS Blotto A Blocking Reagent: sc-2333 and Western Blotting Luminol Reagent: sc-2048. 2) Immunoprecipitation: use Protein A/G PLUS-Agarose: sc-2003 (0.5 ml agarose/2.0 ml). 3) Immunofluorescence: use donkey anti-goat IgG-FITC: sc-2024 (dilution range: 1:100-1:400) or donkey anti-goat IgG-TR: sc-2783 (dilution range: 1:100-1:400) with UltraCruz™ Mounting Medium: sc-24941.

DATA



C10orf11 (P-18): sc-241949. Western blot analysis of C10orf11 expression in human liver tissue extract.

STORAGE

Store at 4° C, **DO NOT FREEZE**. Stable for one year from the date of shipment. Non-hazardous. No MSDS required.

PROTOCOLS

See our web site at www.scbt.com or our catalog for detailed protocols and support products.