

DLN1 (W-20): sc-241961

BACKGROUND

DLN1 also known as SKIDA1 (SKI/DACH domain-containing protein 1) or C10orf140, is an 827 amino acid protein that contains a poly-Alanine region that is highly polymorphic. Belonging to the DACH/dachshund family, DLN1 is encoded by a gene that maps to human chromosome 10, which spans nearly 135 million base pairs, makes up approximately 4.5% of total DNA in cells and encodes nearly 1,200 genes. Several protein-coding genes, including those that encode for chemokines, cadherins, excision repair proteins, early growth response factors (Egrs) and fibroblast growth receptors (FGFRs), are located on chromosome 10. Defects in some of the genes that map to chromosome 10 are associated with Charcot-Marie-Tooth disease, Jackson-Weiss syndrome, Usher syndrome, nonsyndromic deafness, Wolman's syndrome, Cowden syndrome, multiple endocrine neoplasia type 2 and porphyria.

REFERENCES

- Jabs, E.W., et al. 1994. Jackson-Weiss and Crouzon syndromes are allelic with mutations in fibroblast growth factor receptor 2. *Nat. Genet.* 8: 275-279.
- Deloukas, P., et al. 2000. Report of the third international workshop on human chromosome 10 mapping and sequencing 1999. *Cytogenet. Cell Genet.* 90: 1-12.
- Gilbert, F. 2001. Chromosome 10. *Genet. Test.* 5: 69-82.
- Berger, P., et al. 2002. Molecular cell biology of Charcot-Marie-Tooth disease. *Neurogenetics* 4: 1-15.
- Teresi, R.E., et al. 2007. Cowden syndrome-affected patients with PTEN promoter mutations demonstrate abnormal protein translation. *Am. J. Hum. Genet.* 81: 756-767.
- Cho, M.Y., et al. 2008. First report of ovarian dysgerminoma in Cowden syndrome with germline PTEN mutation and PTEN-related 10q loss of tumor heterozygosity. *Am. J. Surg. Pathol.* 32: 1258-1264.
- Yin, Y., et al. 2008. PTEN: a new guardian of the genome. *Oncogene* 27: 5443-5453.
- Laugel, V., et al. 2010. Mutation update for the CSB/ERCC6 and CSA/ERCC8 genes involved in Cockayne syndrome. *Hum. Mutat.* 31: 113-126.

CHROMOSOMAL LOCATION

Genetic locus: SKIDA1 (human) mapping to 10p12.31; Skida1 (mouse) mapping to 2 A3.

SOURCE

DLN1 (W-20) is an affinity purified goat polyclonal antibody raised against a peptide mapping near the C-terminus of DLN1 of human origin.

PRODUCT

Each vial contains 200 µg IgG in 1.0 ml of PBS with < 0.1% sodium azide and 0.1% gelatin.

Blocking peptide available for competition studies, sc-241961 P, (100 µg peptide in 0.5 ml PBS containing < 0.1% sodium azide and 0.2% BSA).

APPLICATIONS

DLN1 (W-20) is recommended for detection of DLN1 of mouse, rat and human origin by Western Blotting (starting dilution 1:200, dilution range 1:100-1:1000), immunoprecipitation [1-2 µg per 100-500 µg of total protein (1 ml of cell lysate)], immunofluorescence (starting dilution 1:50, dilution range 1:50-1:500) and solid phase ELISA (starting dilution 1:30, dilution range 1:30-1:3000).

DLN1 (W-20) is also recommended for detection of DLN1 in additional species, including equine, canine and porcine.

Suitable for use as control antibody for DLN1 siRNA (m): sc-143056, DLN1 shRNA Plasmid (m): sc-143056-SH and DLN1 shRNA (m) Lentiviral Particles: sc-143056-V.

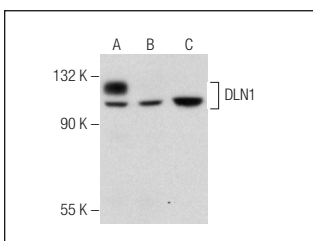
Molecular Weight of DLN1: 90 kDa.

Positive Controls: MCF7 whole cell lysate: sc-2206, PC-3 cell lysate: sc-2220 or DU 145 cell lysate: sc-2268.

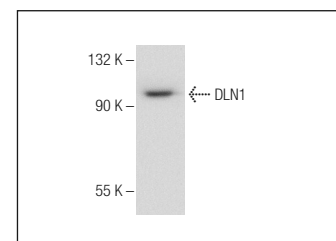
RECOMMENDED SECONDARY REAGENTS

To ensure optimal results, the following support (secondary) reagents are recommended: 1) Western Blotting: use donkey anti-goat IgG-HRP: sc-2020 (dilution range: 1:2000-1:100,000) or Cruz Marker™ compatible donkey anti-goat IgG-HRP: sc-2033 (dilution range: 1:2000-1:5000), Cruz Marker™ Molecular Weight Standards: sc-2035, TBS Blotto A Blocking Reagent: sc-2333 and Western Blotting Luminol Reagent: sc-2048. 2) Immunoprecipitation: use Protein A/G PLUS-Agarose: sc-2003 (0.5 ml agarose/2.0 ml). 3) Immunofluorescence: use donkey anti-goat IgG-FITC: sc-2024 (dilution range: 1:100-1:400) or donkey anti-goat IgG-TR: sc-2783 (dilution range: 1:100-1:400) with UltraCruz™ Mounting Medium: sc-24941.

DATA



DLN1 (W-20): sc-241961. Western blot analysis of DLN1 expression in MCF7 (A), PC-3 (B) and T94 (C) whole cell lysates.



DLN1 (W-20): sc-241961. Western blot analysis of DLN1 expression in DU 145 whole cell lysates.

STORAGE

Store at 4° C, **DO NOT FREEZE**. Stable for one year from the date of shipment. Non-hazardous. No MSDS required.

RESEARCH USE

For research use only, not for use in diagnostic procedures.