

FOPNL (I-17): sc-242073

BACKGROUND

FOPNL, also known as FLJ31153 or DKFZp686N1651, is a 174 amino acid protein that contains one LisH domain. The gene that encodes FOPNL maps to human chromosome 16. Chromosome 16 encodes over 900 genes in approximately 90 million base pairs, makes up nearly 3% of human cellular DNA and is associated with a variety of genetic disorders. The GAN gene is located on chromosome 16 and, with mutation, may lead to giant axonal neuropathy, a nervous system disorder characterized by increasing malfunction with growth. The rare disorder Rubinstein-Taybi syndrome is also associated with chromosome 16, though through the CREBBP gene which encodes a critical CREB binding protein. Signs of Rubinstein-Taybi include mental retardation and predisposition to tumor growth and white blood cell neoplasias. Crohn's disease is a gastrointestinal inflammatory condition associated with chromosome 16 through the NOD2 gene. An association with systemic lupus erythematosus and a number of other autoimmune disorders with the pericentromeric region of chromosome 16 has led to the identification of SLC5A11 as a potential autoimmune modifier. The FOPNL gene product has been provisionally designated FOPNL pending further characterization.

REFERENCES

1. Ben Hamida, C., et al. 1997. Homozygosity mapping of giant axonal neuropathy gene to chromosome 16q24.1. *Neurogenetics* 1: 129-133.
2. Karlsson, J., et al. 2003. Novel quantitative trait loci controlling development of experimental autoimmune encephalomyelitis and proportion of lymphocyte subpopulations. *J. Immunol.* 170: 1019-1026.
3. Forabosco, P., et al. 2006. Meta-analysis of genome-wide linkage studies of systemic lupus erythematosus. *Genes Immun.* 7: 609-614.
4. Carneiro, L.A., et al. 2007. Nod-like receptors in innate immunity and inflammatory diseases. *Ann. Med.* 39: 581-593.
5. King, K., et al. 2007. Identification, evolution, and association study of a novel promoter and first exon of the human NOD2 (CARD15) gene. *Genomics* 90: 493-501.

CHROMOSOMAL LOCATION

Genetic locus: FOPNL (human) mapping to 16p13.11; Fopnl (mouse) mapping to 16 A1.

SOURCE

FOPNL (I-17) is an affinity purified goat polyclonal antibody raised against a peptide mapping within an internal region of FOPNL of human origin.

PRODUCT

Each vial contains 200 µg IgG in 1.0 ml of PBS with < 0.1% sodium azide and 0.1% gelatin.

Blocking peptide available for competition studies, sc-242073 P, (100 µg peptide in 0.5 ml PBS containing < 0.1% sodium azide and 0.2% BSA).

RESEARCH USE

For research use only, not for use in diagnostic procedures.

APPLICATIONS

FOPNL (I-17) is recommended for detection of FOPNL of mouse, rat and human origin by Western Blotting (starting dilution 1:200, dilution range 1:100-1:1000), immunoprecipitation [1-2 µg per 100-500 µg of total protein (1 ml of cell lysate)], immunofluorescence (starting dilution 1:50, dilution range 1:50-1:500) and solid phase ELISA (starting dilution 1:30, dilution range 1:30-1:3000).

FOPNL (I-17) is also recommended for detection of FOPNL in additional species, including canine, bovine, porcine and avian.

Suitable for use as control antibody for C16orf63 siRNA (h): sc-93334, FOPNL siRNA (m): sc-108121, C16orf63 shRNA Plasmid (h): sc-93334-SH, FOPNL shRNA Plasmid (m): sc-108121-SH, C16orf63 shRNA (h) Lentiviral Particles: sc-93334-V and FOPNL shRNA (m) Lentiviral Particles: sc-108121-V.

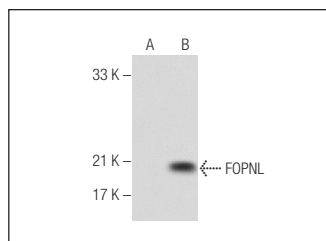
Molecular Weight of FOPNL: 20 kDa.

Positive Controls: FOPNL (m): 293T Lysate: sc-117763.

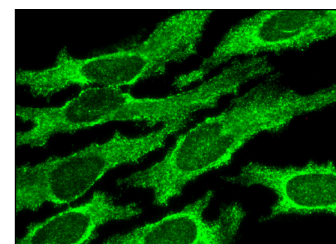
RECOMMENDED SECONDARY REAGENTS

To ensure optimal results, the following support (secondary) reagents are recommended: 1) Western Blotting: use donkey anti-goat IgG-HRP: sc-2020 (dilution range: 1:2000-1:100,000) or Cruz Marker™ compatible donkey anti-goat IgG-HRP: sc-2033 (dilution range: 1:2000-1:5000), Cruz Marker™ Molecular Weight Standards: sc-2035, TBS Blotto A Blocking Reagent: sc-2333 and Western Blotting Luminol Reagent: sc-2048. 2) Immunoprecipitation: use Protein A/G PLUS-Agarose: sc-2003 (0.5 ml agarose/2.0 ml). 3) Immunofluorescence: use donkey anti-goat IgG-FITC: sc-2024 (dilution range: 1:100-1:400) or donkey anti-goat IgG-TR: sc-2783 (dilution range: 1:100-1:400) with UltraCruz™ Mounting Medium: sc-24941.

DATA



FOPNL (I-17): sc-242073. Western blot analysis of FOPNL expression in non-transfected: sc-117752 (A) and mouse FOPNL transfected: sc-117763 (B) 293T whole cell lysates.



FOPNL (I-17): sc-242073. Immunofluorescence staining of methanol-fixed HeLa cells showing cytoplasmic localization.

STORAGE

Store at 4° C, **DO NOT FREEZE**. Stable for one year from the date of shipment. Non-hazardous. No MSDS required.

PROTOCOLS

See our web site at www.scbt.com or our catalog for detailed protocols and support products.