

MLIP (C-18): sc-242224

BACKGROUND

Making up nearly 6% of the human genome, chromosome 6 contains around 1,200 genes within 170 million base pairs of sequence. Deletion of a portion of the q arm of chromosome 6 is associated with early onset intestinal cancer suggesting the presence of a cancer susceptibility locus. Porphyria cutanea tarda is associated with chromosome 6 through the HFE gene which, when mutated, predisposes an individual to developing this porphyria. Notably, the PARK2 gene, which is associated with Parkinson's disease, and the genes encoding the major histocompatibility complex proteins, which are key molecular components of the immune system and determine predisposition to rheumatic diseases, are also located on chromosome 6. Stickler syndrome, 21-hydroxylase deficiency and maple syrup urine disease are also associated with genes on chromosome 6. A bipolar disorder susceptibility locus has been identified on the q arm of chromosome 6. The MLIP gene product has been provisionally designated MLIP pending further characterization.

REFERENCES

- Mungall, A.J., Palmer, S.A., Sims, S.K., Edwards, C.A., Ashurst, J.L., Wilming, L., Jones, M.C., Horton, R., Hunt, S.E., Scott, C.E., Gilbert, J.G.R., Clamp, M.E., Bethel, G., Milne, S., Ainscough, R., Almeida, J.P., Ambrose, K.D., et al. 2003. The DNA sequence and analysis of human chromosome 6. *Nature* 425: 805-811.
- Vuoristo, M.M., Pappas, J.G., Jansen, V. and Ala-Kokko, L. 2004. A stop codon mutation in COL11A2 induces exon skipping and leads to non-ocular Stickler syndrome. *Am. J. Med. Genet. A* 130A: 160-164.
- McQueen, M.B., Devlin, B., Faraone, S.V., Nimgaonkar, V.L., Sklar, P., Smoller, J.W., Abou Jamra, R., Albus, M., Bacanu, S.A., Baron, M., Barrett, T.B., Berrettini, W., Blacker, D., Byerley, W., Cichon, S., Coryell, W., Craddock, N., Daly, M.J., Depaulo, J.R., Edenberg, H.J., et al. 2005. Combined analysis from eleven linkage studies of bipolar disorder provides strong evidence of susceptibility loci on chromosomes 6q and 8q. *Am. J. Hum. Genet.* 77: 582-595.
- Batts, K.P. 2007. Iron overload syndromes and the liver. *Mod. Pathol.* 20: S31-S39.
- Olsson, K.S., Ritter, B. and Hansson, N. 2007. The HLA-A1-B8 haplotype hitchhiking with the hemochromatosis mutation: does it affect the phenotype? *Eur. J. Haematol.* 79: 429-434.

CHROMOSOMAL LOCATION

Genetic locus: MLIP (human) mapping to 6p12.1.

SOURCE

MLIP (C-18) is an affinity purified goat polyclonal antibody raised against a peptide mapping at the C-terminus of MLIP of human origin.

PRODUCT

Each vial contains 200 µg IgG in 1.0 ml of PBS with < 0.1% sodium azide and 0.1% gelatin.

Blocking peptide available for competition studies, sc-242224 P, (100 µg peptide in 0.5 ml PBS containing < 0.1% sodium azide and 0.2% BSA).

APPLICATIONS

MLIP (C-18) is recommended for detection of MLIP of human origin by Western Blotting (starting dilution 1:200, dilution range 1:100-1:1000), immunoprecipitation [1-2 µg per 100-500 µg of total protein (1 ml of cell lysate)], immunofluorescence (starting dilution 1:50, dilution range 1:50-1:500) and solid phase ELISA (starting dilution 1:30, dilution range 1:30-1:3000).

MLIP (C-18) is also recommended for detection of MLIP in additional species, including canine.

Suitable for use as control antibody for MLIP siRNA (h): sc-95453, MLIP shRNA Plasmid (h): sc-95453-SH and MLIP shRNA (h) Lentiviral Particles: sc-95453-V.

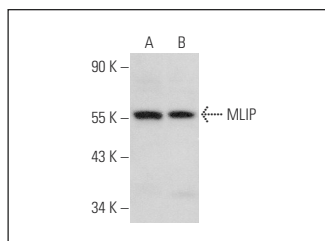
Molecular Weight of MLIP: 50 kDa.

Positive Controls: MLIP (h): 293T Lysate: sc-110901, HEK293 whole cell lysate: sc-45136 or HeLa whole cell lysate: sc-2200.

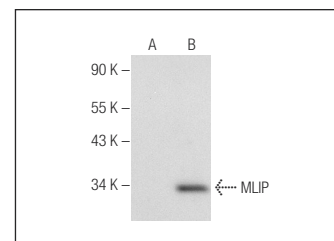
RECOMMENDED SECONDARY REAGENTS

To ensure optimal results, the following support (secondary) reagents are recommended: 1) Western Blotting: use donkey anti-goat IgG-HRP: sc-2020 (dilution range: 1:2000-1:100,000) or Cruz Marker™ compatible donkey anti-goat IgG-HRP: sc-2033 (dilution range: 1:2000-1:5000), Cruz Marker™ Molecular Weight Standards: sc-2035, TBS Blotto A Blocking Reagent: sc-2333 and Western Blotting Luminol Reagent: sc-2048. 2) Immunoprecipitation: use Protein A/G PLUS-Agarose: sc-2003 (0.5 ml agarose/2.0 ml). 3) Immunofluorescence: use donkey anti-goat IgG-FITC: sc-2024 (dilution range: 1:100-1:400) or donkey anti-goat IgG-TR: sc-2783 (dilution range: 1:100-1:400) with UltraCruz™ Mounting Medium: sc-24941.

DATA



MLIP (C-18): sc-242224. Western blot analysis of MLIP expression in HEK293 (A) and HeLa (B) whole cell lysates.



MLIP (C-18): sc-242224. Western blot analysis of MLIP expression in non-transfected: sc-117752 (A) and human MLIP transfected: sc-110901 (B) 293T whole cell lysates.

STORAGE

Store at 4° C, **DO NOT FREEZE**. Stable for one year from the date of shipment. Non-hazardous. No MSDS required.

RESEARCH USE

For research use only, not for use in diagnostic procedures.