

CCDC107 (M-18): sc-242335

BACKGROUND

CCDC107 (coiled-coil domain containing 107) is a 283 amino acid single-pass membrane protein that exists as 4 alternatively spliced isoforms. The gene encoding CCDC107 maps to human chromosome 9p13.3. Chromosome 9 consists of about 145 million bases, represents 4% of the human genome and encodes nearly 900 genes. Thought to play a role in gender determination, deletion of the distal portion of 9p can lead to development of male to female sex reversal, the phenotype of a female with a male X,Y genotype. Hereditary hemorrhagic telangiectasia, which is characterized by harmful vascular defects, is associated with the chromosome 9 gene encoding endoglin protein, ENG. Familial dysautonomia is also associated with chromosome 9 though through the gene IKBKAP. Notably, chromosome 9 encompasses the largest interferon family gene cluster. Chromosome 9 is partnered with chromosome 22 in the translocation leading to the aberrant production of BCR-ABL fusion protein often found in leukemias.

REFERENCES

- Humphray, S.J., et al. 2004. DNA sequence and analysis of human chromosome 9. *Nature* 429: 369-374.
- Coppo, P., et al. 2006. BCR-ABL activates STAT3 via JAK and MEK pathways in human cells. *Br. J. Haematol.* 134: 171-179.
- Zheng, X., et al. 2006. BCR and its mutants, the reciprocal t(9;22)-associated ABL/BCR fusion proteins, differentially regulate the cytoskeleton and cell motility. *BMC Cancer* 7: 262.
- Burmeister, T., et al. 2007. Atypical BCR-ABL mRNA transcripts in adult acute lymphoblastic leukemia. *Haematologica* 92: 1699-1702.
- Cottin, V., et al. 2007. Pulmonary vascular manifestations of hereditary hemorrhagic telangiectasia (Rendu-Osler disease). *Respiration* 74: 361-378.
- Fernandez-L, A., et al. 2007. Gene expression fingerprinting for human hereditary hemorrhagic telangiectasia. *Hum. Mol. Genet.* 16: 1515-1533.
- Gardiner, J., et al. 2007. Potential role of tubulin acetylation and microtubule-based protein trafficking in familial dysautonomia. *Traffic* 8: 1145-1149.
- Hims, M.M., et al. 2007. A humanized IKBKAP transgenic mouse models a tissue-specific human splicing defect. *Genomics* 90: 389-396.
- Temtam, S.A., et al. 2007. Phenotypic and cytogenetic spectrum of 9p trisomy. *Genet. Couns.* 18: 29-48.

CHROMOSOMAL LOCATION

Genetic locus: *Ccdc107* (mouse) mapping to 4 B1.

SOURCE

CCDC107 (M-18) is an affinity purified goat polyclonal antibody raised against a peptide mapping near the C-terminus of CCDC107 of mouse origin.

STORAGE

Store at 4° C, ****DO NOT FREEZE****. Stable for one year from the date of shipment. Non-hazardous. No MSDS required.

PRODUCT

Each vial contains 200 µg IgG in 1.0 ml of PBS with < 0.1% sodium azide and 0.1% gelatin.

Blocking peptide available for competition studies, sc-242335 P, (100 µg peptide in 0.5 ml PBS containing < 0.1% sodium azide and 0.2% BSA).

APPLICATIONS

CCDC107 (M-18) is recommended for detection of CCDC107 of mouse and rat origin by Western Blotting (starting dilution 1:200, dilution range 1:100-1:1000), immunofluorescence (starting dilution 1:50, dilution range 1:50-1:500) and solid phase ELISA (starting dilution 1:30, dilution range 1:30-1:3000).

Suitable for use as control antibody for CCDC107 siRNA (m): sc-142050, CCDC107 shRNA Plasmid (m): sc-142050-SH and CCDC107 shRNA (m) Lentiviral Particles: sc-142050-V.

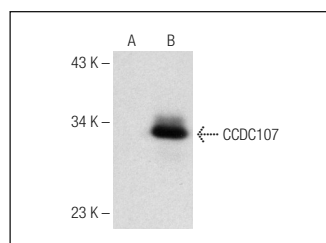
Molecular Weight of CCDC107: 31 kDa.

Positive Controls: CCDC107 (m): 293T Lysate: sc-125103.

RECOMMENDED SECONDARY REAGENTS

To ensure optimal results, the following support (secondary) reagents are recommended: 1) Western Blotting: use donkey anti-goat IgG-HRP: sc-2020 (dilution range: 1:2000-1:100,000) or Cruz Marker™ compatible donkey anti-goat IgG-HRP: sc-2033 (dilution range: 1:2000-1:5000), Cruz Marker™ Molecular Weight Standards: sc-2035, TBS Blotto A Blocking Reagent: sc-2333 and Western Blotting Luminol Reagent: sc-2048. 2) Immunofluorescence: use donkey anti-goat IgG-FITC: sc-2024 (dilution range: 1:100-1:400) or donkey anti-goat IgG-TR: sc-2783 (dilution range: 1:100-1:400) with UltraCruz™ Mounting Medium: sc-24941.

DATA



CCDC107 (M-18): sc-242335. Western blot analysis of CCDC107 expression in non-transfected: sc-117752 (A) and mouse CCDC107 transfected: sc-125103 (B) 293T whole cell lysates.

RESEARCH USE

For research use only, not for use in diagnostic procedures.

PROTOCOLS

See our web site at www.scbt.com or our catalog for detailed protocols and support products.