

CCDC44 (E-16): sc-242366

BACKGROUND

CCDC44 (coiled-coil domain containing 44) is a 297 amino acid protein that is encoded by a gene which maps to human chromosome 17. Chromosome 17 comprises over 2.5% of the human genome and encodes over 1,200 genes. Two key tumor suppressor genes are associated with chromosome 17, namely, p53 and BRCA1. Tumor suppressor p53 is necessary for maintenance of cellular genetic integrity by moderating cell fate through DNA repair versus cell death. Malfunction or loss of p53 expression is associated with malignant cell growth and Li-Fraumeni syndrome. Like p53, BRCA1 is directly involved in DNA repair, though specifically it is recognized as a genetic determinant of early onset breast cancer and predisposition to cancers of the ovary, colon, prostate gland and fallopian tubes.

REFERENCES

1. Nusbaum, R., Vogel, K.J. and Ready, K. 2006-2007. Susceptibility to breast cancer: hereditary syndromes and low penetrance genes. *Breast Dis.* 27: 21-50.
2. Ropolo, A., Grasso, D., Pardo, R., Sacchetti, M.L., Archange, C., Lo Re, A., Seux, M., Nowak, J., Gonzalez, C.D., Iovanna, J.L. and Vaccaro, M.I. 2007. The pancreatitis-induced vacuole membrane protein 1 triggers autophagy in mammalian cells. *J. Biol. Chem.* 282: 37124-37133.
3. Tai, Y.C., Domchek, S., Parmigiani, G. and Chen, S. 2007. Breast cancer risk among male BRCA1 and BRCA2 mutation carriers. *J. Natl. Cancer Inst.* 99: 1811-1814.
4. Yan, J., Jiang, J., Lim, C.A., Wu, Q., Ng, H.H. and Chin, K.C. 2007. BLIMP1 regulates cell growth through repression of p53 transcription. *Proc. Natl. Acad. Sci. USA* 104: 1841-1846.
5. Weraarpachai, W., Antonicka, H., Sasarman, F., Seeger, J., Schrank, B., Kolesar, J.E., Lochmüller, H., Chevrette, M., Kaufman, B.A., Horvath, R. and Shoubridge, E.A. 2009. Mutation in TACO1, encoding a translational activator of COX I, results in cytochrome c oxidase deficiency and late-onset Leigh syndrome. *Nat. Genet.* 41: 833-837.

CHROMOSOMAL LOCATION

Genetic locus: TACO1 (human) mapping to 17q23.3.

SOURCE

CCDC44 (E-16) is an affinity purified goat polyclonal antibody raised against a peptide mapping within an internal region of CCDC44 of human origin.

PRODUCT

Each vial contains 200 µg IgG in 1.0 ml of PBS with < 0.1% sodium azide and 0.1% gelatin.

Blocking peptide available for competition studies, sc-242366 P, (100 µg peptide in 0.5 ml PBS containing < 0.1% sodium azide and 0.2% BSA).

STORAGE

Store at 4° C, ****DO NOT FREEZE****. Stable for one year from the date of shipment. Non-hazardous. No MSDS required.

APPLICATIONS

CCDC44 (E-16) is recommended for detection of CCDC44 of human origin by Western Blotting (starting dilution 1:200, dilution range 1:100-1:1000), immunoprecipitation [1-2 µg per 100-500 µg of total protein (1 ml of cell lysate)], immunofluorescence (starting dilution 1:50, dilution range 1:50-1:500) and solid phase ELISA (starting dilution 1:30, dilution range 1:30-1:3000); non cross-reactive with other CCDC family members.

CCDC44 (E-16) is also recommended for detection of CCDC44 in additional species, including equine and bovine.

Suitable for use as control antibody for CCDC44 siRNA (h): sc-93827, CCDC44 shRNA Plasmid (h): sc-93827-SH and CCDC44 shRNA (h) Lentiviral Particles: sc-93827-V.

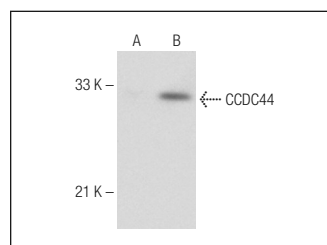
Molecular Weight of CCDC44: 32 kDa.

Positive Controls: CCDC44 (m): 293T Lysate: sc-125111.

RECOMMENDED SECONDARY REAGENTS

To ensure optimal results, the following support (secondary) reagents are recommended: 1) Western Blotting: use donkey anti-goat IgG-HRP: sc-2020 (dilution range: 1:2000-1:100,000) or Cruz Marker™ compatible donkey anti-goat IgG-HRP: sc-2033 (dilution range: 1:2000-1:5000), Cruz Marker™ Molecular Weight Standards: sc-2035, TBS Blotto A Blocking Reagent: sc-2333 and Western Blotting Luminol Reagent: sc-2048. 2) Immunoprecipitation: use Protein A/G PLUS-Agarose: sc-2003 (0.5 ml agarose/2.0 ml). 3) Immunofluorescence: use donkey anti-goat IgG-FITC: sc-2024 (dilution range: 1:100-1:400) or donkey anti-goat IgG-TR: sc-2783 (dilution range: 1:100-1:400) with UltraCruz™ Mounting Medium: sc-24941.

DATA



CCDC44 (E-16): sc-242366. Western blot analysis of CCDC44 expression in non-transfected: sc-117752 (A) and mouse CCDC44 transfected: sc-125111 (B) 293T whole cell lysates.

RESEARCH USE

For research use only, not for use in diagnostic procedures.

MONOS
Satisfaction
Guaranteed

Try **CCDC44 (D-3): sc-398915**, our highly recommended monoclonal alternative to CCDC44 (E-16).