

CLEC-2L (C-20): sc-242460

BACKGROUND

The C-type lectin/C-type lectin-like domain (CTL/CTLD) superfamily consists of a variety of proteins that share a common protein fold and have diverse functions, including cell-cell signaling, cell adhesion, glycoprotein turnover and immune responses. CLEC-2L (C-type lectin domain family 2 member L) is a 214 amino acid single-pass membrane protein that contains one C-type lectin domain and belongs to the CTL/CTLD superfamily. The gene encoding CLEC-2L maps to human chromosome 7, which houses over 1,000 genes and comprises nearly 5% of the human genome. Chromosome 7 has been linked to Osteogenesis imperfecta, Pendred syndrome, Lissencephaly, Citrullinemia and Shwachman-Diamond syndrome. The deletion of a portion of the q arm of chromosome 7 is associated with Williams-Beuren syndrome, a condition characterized by mild mental retardation, an unusual comfort and friendliness with strangers and an elfin appearance.

REFERENCES

1. Tspirouras, P., Myers, J.C., Ramirez, F. and Prockop, D.J. 1983. Restriction fragment length polymorphism associated with the pro α 2(I) gene of human type I procollagen. Application to a family with an autosomal dominant form of osteogenesis imperfecta. *J. Clin. Invest.* 72: 1262-1267.
2. Drickamer, K. 1999. C-type lectin-like domains. *Curr. Opin. Struct. Biol.* 9: 585-590.
3. Iwasaki, S., Usami, S., Abe, S., Isoda, H., Watanabe, T. and Hoshino, T. 2001. Long-term audiological feature in Pendred syndrome caused by PDS mutation. *Arch. Otolaryngol. Head Neck Surg.* 127: 705-708.
4. Arce, I., Roda-Navarro, P., Montoya, M.C., Hernanz-Falcón, P., Puig-Kröger, A. and Fernández-Ruiz, E. 2001. Molecular and genomic characterization of human DLEC, a novel member of the C-type lectin receptor gene family preferentially expressed on monocyte-derived dendritic cells. *Eur. J. Immunol.* 31: 2733-2740.
5. Ebner, S., Sharon, N. and Ben-Tal, N. 2003. Evolutionary analysis reveals collective properties and specificity in the C-type lectin and lectin-like domain superfamily. *Proteins* 53: 44-55.
6. McMahon, S.A., Miller, J.L., Lawton, J.A., Kerkow, D.E., Hodes, A., Marti-Renom, M.A., Doulatov, S., Narayanan, E., Sali, A., Miller, J.F. and Ghosh, P. 2005. The C-type lectin fold as an evolutionary solution for massive sequence variation. *Nat. Struct. Mol. Biol.* 12: 886-892.
7. Gijzen, K., Cambi, A., Torensma, R. and Figdor, C.G. 2006. C-type lectins on dendritic cells and their interaction with pathogen-derived and endogenous glycoconjugates. *Curr. Protein Pept. Sci.* 7: 283-294.
8. Gilbert-Dussardier, B. 2006. Williams-Beuren syndrome. *Rev Prat.* 56: 2102-2106.

CHROMOSOMAL LOCATION

Genetic locus: CLEC2L (human) mapping to 7q34; Clec2l (mouse) mapping to 6 B1.

RESEARCH USE

For research use only, not for use in diagnostic procedures.

SOURCE

CLEC-2L (C-20) is an affinity purified goat polyclonal antibody raised against a peptide mapping within an internal region of CLEC-2L of human origin.

PRODUCT

Each vial contains 200 μ g IgG in 1.0 ml of PBS with < 0.1% sodium azide and 0.1% gelatin.

Blocking peptide available for competition studies, sc-242460 P, (100 μ g peptide in 0.5 ml PBS containing < 0.1% sodium azide and 0.2% BSA).

APPLICATIONS

CLEC-2L (C-20) is recommended for detection of CLEC-2L of mouse, rat and human origin by Western Blotting (starting dilution 1:200, dilution range 1:100-1:1000), immunoprecipitation [1-2 μ g per 100-500 μ g of total protein (1 ml of cell lysate)], immunofluorescence (starting dilution 1:50, dilution range 1:50-1:500) and solid phase ELISA (starting dilution 1:30, dilution range 1:30-1:3000).

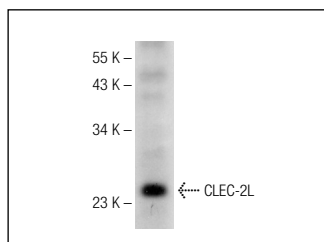
CLEC-2L (C-20) is also recommended for detection of CLEC-2L in additional species, including equine, canine and bovine.

Suitable for use as control antibody for CLEC-2L siRNA (m): sc-142386, CLEC-2L shRNA Plasmid (m): sc-142386-SH and CLEC-2L shRNA (m) Lentiviral Particles: sc-142386-V.

Molecular Weight of CLEC-2L: 24 kDa.

Positive Controls: rat cerebellum extract: sc-2398.

DATA



CLEC-2L (C-20): sc-242460. Western blot analysis of CLEC-2L expression in rat cerebellum tissue extract.

STORAGE

Store at 4° C, ****DO NOT FREEZE****. Stable for one year from the date of shipment. Non-hazardous. No MSDS required.

PROTOCOLS

See our web site at www.scbt.com or our catalog for detailed protocols and support products.