

COLEC11 (S-14): sc-242497

BACKGROUND

COLEC11 (collectin sub-family member 11) is also known as CLK1, CL-K1-I, MGC3279, CL-K1-II, CL-K1-IIa, CL-K1-IIb or DKFZp686N1868. COLEC11 is a C-type lectin, that contains a collagen-like domain and a carbohydrate recognition domain, and play a role in host-defense. Binding to various sugars and LPS, COLEC11 does not bind to glucose, hnRNP or β -1,3-Gal-T3. COLEC11 binds very well to fucose but not to mannose. COLEC11 transcripts have been detected in most tissues with high expression in kidney, liver, fetal liver, small intestine, thymus, spinal cord, placenta, adrenal gland, pancreas, and several cell lines. Totalling 271 amino acids in length, COLEC11 is a secreted protein, and all COLEC11 isoforms have oligomeric structures created through disulfide bonding.

REFERENCES

- Zelensky, A.N. and Gready, J.E. 2004. C-type lectin-like domains in *Fugu rubripes*. BMC Genomics 5: 51.
- Keshi, H., et al. 2006. Identification and characterization of a novel human collectin CL-K1. Microbiol. Immunol. 50: 1001-1013.
- Nieländer, I., et al. 2007. Combining array-based approaches for the identification of candidate tumor suppressor loci in mature lymphoid neoplasms. APMIS 115: 1107-1134.
- Online Mendelian Inheritance in Man, OMIM™. 2008. Johns Hopkins University, Baltimore, MD. MIM Number: 612502. World Wide Web URL: <http://www.ncbi.nlm.nih.gov/omim/>
- Motomura, W., et al. 2008. Immunolocalization of a novel collectin CL-K1 in murine tissues. J. Histochem. Cytochem. 56: 243-252.
- Kelley, J.M., et al. 2010. Pathways: Strategies for susceptibility genes in SLE. Autoimmun. Rev. 9: 473-476.
- Hsu, Y.H., et al. 2010. An integration of genome-wide association study and gene expression profiling to prioritize the discovery of novel susceptibility Loci for osteoporosis-related traits. PLoS Genet. 6: e1000977.

CHROMOSOMAL LOCATION

Genetic locus: COLEC11 (human) mapping to 2p25.3; Colec11 (mouse) mapping to 12 A2.

SOURCE

COLEC11 (S-14) is an affinity purified goat polyclonal antibody raised against a peptide mapping within an internal region of COLEC11 of human origin.

PRODUCT

Each vial contains 200 μ g IgG in 1.0 ml of PBS with < 0.1% sodium azide and 0.1% gelatin.

Blocking peptide available for competition studies, sc-242497 P, (100 μ g peptide in 0.5 ml PBS containing < 0.1% sodium azide and 0.2% BSA).

RESEARCH USE

For research use only, not for use in diagnostic procedures.

APPLICATIONS

COLEC11 (S-14) is recommended for detection of COLEC11 of mouse, rat and human origin by Western Blotting (starting dilution 1:200, dilution range 1:100-1:1000), immunoprecipitation [1-2 μ g per 100-500 μ g of total protein (1 ml of cell lysate)], immunofluorescence (starting dilution 1:50, dilution range 1:50-1:500) and solid phase ELISA (starting dilution 1:30, dilution range 1:30-1:3000); non cross-reactive with COLEC10.

COLEC11 (S-14) is also recommended for detection of COLEC11 in additional species, including equine, canine, bovine, porcine and avian.

Suitable for use as control antibody for COLEC11 siRNA (h): sc-94909, COLEC11 siRNA (m): sc-142479, COLEC11 shRNA Plasmid (h): sc-94909-SH, COLEC11 shRNA Plasmid (m): sc-142479-SH, COLEC11 shRNA (h) Lentiviral Particles: sc-94909-V and COLEC11 shRNA (m) Lentiviral Particles: sc-142479-V.

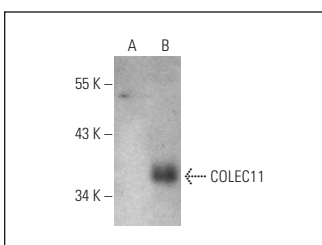
Molecular Weight of COLEC11: 29 kDa.

Positive Controls: COLEC11 (h): 293T Lysate: sc-370384.

RECOMMENDED SECONDARY REAGENTS

To ensure optimal results, the following support (secondary) reagents are recommended: 1) Western Blotting: use donkey anti-goat IgG-HRP: sc-2020 (dilution range: 1:2000-1:100,000) or Cruz Marker™ compatible donkey anti-goat IgG-HRP: sc-2033 (dilution range: 1:2000-1:5000), Cruz Marker™ Molecular Weight Standards: sc-2035, TBS Blotto A Blocking Reagent: sc-2333 and Western Blotting Luminol Reagent: sc-2048. 2) Immunoprecipitation: use Protein A/G PLUS-Agarose: sc-2003 (0.5 ml agarose/2.0 ml). 3) Immunofluorescence: use donkey anti-goat IgG-FITC: sc-2024 (dilution range: 1:100-1:400) or donkey anti-goat IgG-TR: sc-2783 (dilution range: 1:100-1:400) with UltraCruz™ Mounting Medium: sc-24941.

DATA



COLEC11 (S-14): sc-242497. Western blot analysis of COLEC11 expression in non-transfected: sc-117752 (A) and human COLEC11 transfected: sc-370384 (B) 293T whole cell lysates.

STORAGE

Store at 4° C, **DO NOT FREEZE**. Stable for one year from the date of shipment. Non-hazardous. No MSDS required.

PROTOCOLS

See our web site at www.scbt.com or our catalog for detailed protocols and support products.