

# FAM100A (C-18): sc-242654

## BACKGROUND

FAM100A is a 177 amino acid protein that belongs to the FAM100 family. Alternatively spliced into two isoforms, the gene encoding FAM100A maps to human chromosome 16. Chromosome 16 encodes over 900 genes in approximately 90 million base pairs, makes up nearly 3% of human cellular DNA and is associated with a variety of genetic disorders. The GAN gene is located on chromosome 16 and, with mutation, may lead to giant axonal neuropathy, a nervous system disorder characterized by increasing malfunction with growth. The rare disorder Rubinstein-Taybi syndrome is also associated with chromosome 16, though through the CREBBP gene which encodes a critical CREB binding protein. Signs of Rubinstein-Taybi include mental retardation and predisposition to tumor growth and white blood cell neoplasias. Crohn's disease is a gastrointestinal inflammatory condition associated with chromosome 16 through the NOD2 gene. An association with systemic lupus erythematosus and a number of other autoimmune disorders with the pericentromeric region of chromosome 16 has led to the identification of SLC5A11 as a potential autoimmune modifier.

## REFERENCES

- Baraitser, M. and Preece, M.A. 1983. The Rubinstein-Taybi syndrome: occurrence in two sets of identical twins. *Clin. Genet.* 23: 318-320.
- Breuning, M.H., et al. 1993. Rubinstein-Taybi syndrome caused by submicroscopic deletions within 16p13.3. *Am. J. Hum. Genet.* 52: 249-254.
- Bomont, P., et al. 2000. The gene encoding gigaxonin, a new member of the cytoskeletal BTB/kelch repeat family, is mutated in giant axonal neuropathy. *Nat. Genet.* 26: 370-374.
- Kuhlenbäumer, G., et al. 2002. Giant axonal neuropathy (GAN): case report and two novel mutations in the gigaxonin gene. *Neurology* 58: 1273-1276.
- Cho, J.H. 2004. Advances in the genetics of inflammatory bowel disease. *Curr. Gastroenterol. Rep.* 6: 467-473.
- Mathew, C.G. and Lewis, C.M. 2004. Genetics of inflammatory bowel disease: progress and prospects. *Hum. Mol. Genet.* 13: R161-R168.

## CHROMOSOMAL LOCATION

Genetic locus: FAM100A (human) mapping to 16p13.3; Fam100a (mouse) mapping to 16 A1.

## SOURCE

FAM100A (C-18) is an affinity purified goat polyclonal antibody raised against a peptide mapping at the C-terminus of FAM100A of human origin.

## PRODUCT

Each vial contains 200 µg IgG in 1.0 ml of PBS with < 0.1% sodium azide and 0.1% gelatin.

Blocking peptide available for competition studies, sc-242654 P, (100 µg peptide in 0.5 ml PBS containing < 0.1% sodium azide and 0.2% BSA).

## RESEARCH USE

For research use only, not for use in diagnostic procedures.

## APPLICATIONS

FAM100A (C-18) is recommended for detection of FAM100A of mouse, rat and human origin by Western Blotting (starting dilution 1:200, dilution range 1:100-1:1000), immunoprecipitation [1-2 µg per 100-500 µg of total protein (1 ml of cell lysate)], immunofluorescence (starting dilution 1:50, dilution range 1:50-1:500) and solid phase ELISA (starting dilution 1:30, dilution range 1:30-1:3000); non cross-reactive with FAM100B.

FAM100A (C-18) is also recommended for detection of FAM100A in additional species, including canine, bovine and porcine.

Suitable for use as control antibody for FAM100A siRNA (h): sc-93424, FAM100A siRNA (m): sc-145010, FAM100A shRNA Plasmid (h): sc-93424-SH, FAM100A shRNA Plasmid (m): sc-145010-SH, FAM100A shRNA (h) Lentiviral Particles: sc-93424-V and FAM100A shRNA (m) Lentiviral Particles: sc-145010-V.

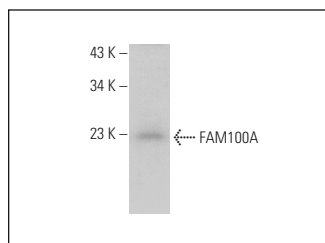
Molecular Weight of FAM100A: 19/22 kDa.

Positive Controls: HeLa whole cell lysate: sc-2200.

## RECOMMENDED SECONDARY REAGENTS

To ensure optimal results, the following support (secondary) reagents are recommended: 1) Western Blotting: use donkey anti-goat IgG-HRP: sc-2020 (dilution range: 1:2000-1:100,000) or Cruz Marker™ compatible donkey anti-goat IgG-HRP: sc-2033 (dilution range: 1:2000-1:5000), Cruz Marker™ Molecular Weight Standards: sc-2035, TBS Blotto A Blocking Reagent: sc-2333 and Western Blotting Luminol Reagent: sc-2048. 2) Immunoprecipitation: use Protein A/G PLUS-Agarose: sc-2003 (0.5 ml agarose/2.0 ml). 3) Immunofluorescence: use donkey anti-goat IgG-FITC: sc-2024 (dilution range: 1:100-1:400) or donkey anti-goat IgG-TR: sc-2783 (dilution range: 1:100-1:400) with UltraCruz™ Mounting Medium: sc-24941.

## DATA



FAM100A (C-18): sc-242654. Western blot analysis of FAM100A expression in HeLa whole cell lysate.

## STORAGE

Store at 4° C, \*\*DO NOT FREEZE\*\*. Stable for one year from the date of shipment. Non-hazardous. No MSDS required.

## PROTOCOLS

See our web site at [www.scbt.com](http://www.scbt.com) or our catalog for detailed protocols and support products.