

# FAM184A (C-15): sc-242742

## BACKGROUND

Making up nearly 6% of the human genome, chromosome 6 contains around 1,200 genes within 170 million base pairs of sequence. Deletion of a portion of the q arm of chromosome 6 is associated with early onset intestinal cancer suggesting the presence of a cancer susceptibility locus. Porphyria cutanea tarda is associated with chromosome 6 through the HFE gene which, when mutated, predisposes an individual to developing this porphyria. Notably, the PARK2 gene, which is associated with Parkinson's disease, and the genes encoding the major histocompatibility complex proteins, which are key molecular components of the immune system and determine predisposition to rheumatic diseases, are also located on chromosome 6. Stickler syndrome, 21-hydroxylase deficiency and maple syrup urine disease are also associated with genes on chromosome 6. A bipolar disorder susceptibility locus has been identified on the q arm of chromosome 6. The FAM184A gene product has been provisionally designated FAM184A pending further characterization.

## CHROMOSOMAL LOCATION

Genetic locus: FAM184A (human) mapping to 6q22.31; Fam184a (mouse) mapping to 10 B3.

## SOURCE

FAM184A (C-15) is an affinity purified goat polyclonal antibody raised against a peptide mapping near the C-terminus of FAM184A of human origin.

## PRODUCT

Each vial contains 200 µg IgG in 1.0 ml of PBS with < 0.1% sodium azide and 0.1% gelatin.

Blocking peptide available for competition studies, sc-242742 P, (100 µg peptide in 0.5 ml PBS containing < 0.1% sodium azide and 0.2% BSA).

## APPLICATIONS

FAM184A (C-15) is recommended for detection of FAM184A of mouse, rat and human origin by Western Blotting (starting dilution 1:200, dilution range 1:100-1:1000), immunoprecipitation [1-2 µg per 100-500 µg of total protein (1 ml of cell lysate)], immunofluorescence (starting dilution 1:50, dilution range 1:50-1:500) and solid phase ELISA (starting dilution 1:30, dilution range 1:30-1:3000); non cross-reactive with FAM184B.

FAM184A (C-15) is also recommended for detection of FAM184A in additional species, including equine, canine, bovine, porcine and avian.

Suitable for use as control antibody for FAM184A siRNA (h): sc-95169, FAM184A siRNA (m): sc-140209, FAM184A shRNA Plasmid (h): sc-95169-SH, FAM184A shRNA Plasmid (m): sc-140209-SH, FAM184A shRNA (h) Lentiviral Particles: sc-95169-V and FAM184A shRNA (m) Lentiviral Particles: sc-140209-V.

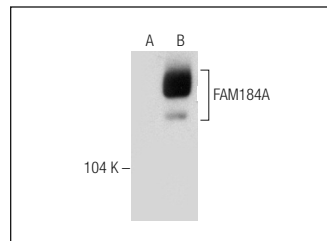
Molecular Weight of FAM184A: 133 kDa.

Positive Controls: mouse heart extract: sc-2254 or FAM184A (h): 293T Lysate: sc-176994.

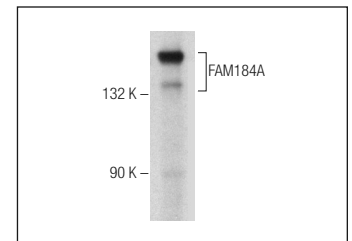
## RECOMMENDED SECONDARY REAGENTS

To ensure optimal results, the following support (secondary) reagents are recommended: 1) Western Blotting: use donkey anti-goat IgG-HRP: sc-2020 (dilution range: 1:2000-1:100,000) or Cruz Marker™ compatible donkey anti-goat IgG-HRP: sc-2033 (dilution range: 1:2000-1:5000), Cruz Marker™ Molecular Weight Standards: sc-2035, TBS Blotto A Blocking Reagent: sc-2333 and Western Blotting Luminol Reagent: sc-2048. 2) Immunoprecipitation: use Protein A/G PLUS-Agarose: sc-2003 (0.5 ml agarose/2.0 ml). 3) Immunofluorescence: use donkey anti-goat IgG-FITC: sc-2024 (dilution range: 1:100-1:400) or donkey anti-goat IgG-TR: sc-2783 (dilution range: 1:100-1:400) with UltraCruz™ Mounting Medium: sc-24941.

## DATA



FAM184A (C-15): sc-242742. Western blot analysis of FAM184A expression in non-transfected: sc-117752 (A) and human FAM184A transfected: sc-176994 (B) 293T whole cell lysates.



FAM184A (C-15): sc-242742. Western blot analysis of FAM184A expression in mouse heart tissue extract.

## STORAGE

Store at 4° C, **\*\*DO NOT FREEZE\*\***. Stable for one year from the date of shipment. Non-hazardous. No MSDS required.

## RESEARCH USE

For research use only, not for use in diagnostic procedures.

## PROTOCOLS

See our web site at [www.scbt.com](http://www.scbt.com) or our catalog for detailed protocols and support products.



Try **FAM184A (G-7): sc-377051** or **FAM184A (G-10): sc-377116**, our highly recommended monoclonal alternatives to FAM184A (C-15).