

FAM69A (T-17): sc-242768

BACKGROUND

FAM69A is a single-pass type II membrane protein that contains 428 amino acids and belongs to the FAM69 family. FAM69A localizes to the endoplasmic reticulum membrane where the many cysteines in the luminal domain are likely involved in disulfide bonds. Alternatively spliced into two isoforms, the gene encoding FAM69A maps to human chromosome 1. Chromosome 1 spans 260 million base pairs, contains over 3,000 genes and comprises nearly 8% of the human genome. Chromosome 1 houses a large number of disease-associated genes, including those that are involved in familial adenomatous polyposis, Stickler syndrome, Parkinson's disease, Gaucher disease, schizophrenia and Usher syndrome. Aberrations in chromosome 1 are found in a variety of cancers, including head and neck cancer, malignant melanoma and multiple myeloma.

REFERENCES

1. Eudy, J.D., et al. 1998. Mutation of a gene encoding a protein with extracellular matrix motifs in Usher syndrome type IIa. *Science* 280: 1753-1757.
2. Tayebi, N., et al. 2001. Gaucher disease and parkinsonism: a phenotypic and genotypic characterization. *Mol. Genet. Metab.* 73: 313-321.
3. Plasilova, M., et al. 2004. Exclusion of an extracolonic disease modifier locus on chromosome 1p33-36 in a large Swiss familial adenomatous polyposis kindred. *Eur. J. Hum. Genet.* 12: 365-371.
4. Betarbet, R., et al. 2008. Fas-associated factor 1 and Parkinson's disease. *Neurobiol. Dis.* 31: 309-315.
5. Holliday, E.G., et al. 2009. Strong evidence for a novel schizophrenia risk locus on chromosome 1p31.1 in homogeneous pedigrees from Tamil Nadu, India. *Am. J. Psychiatry* 166: 206-215.
6. Balcárková, J., et al. 2009. Gain of chromosome arm 1q in patients in relapse and progression of multiple myeloma. *Cancer Genet. Cytogenet.* 192: 68-72.

CHROMOSOMAL LOCATION

Genetic locus: FAM69A (human) mapping to 1p22.1; Fam69a (mouse) mapping to 5 F.

SOURCE

FAM69A (T-17) is an affinity purified goat polyclonal antibody raised against a peptide mapping within an internal region of FAM69A of human origin.

PRODUCT

Each vial contains 200 µg IgG in 1.0 ml of PBS with < 0.1% sodium azide and 0.1% gelatin.

Blocking peptide available for competition studies, sc-242768 P, (100 µg peptide in 0.5 ml PBS containing < 0.1% sodium azide and 0.2% BSA).

STORAGE

Store at 4° C, ****DO NOT FREEZE****. Stable for one year from the date of shipment. Non-hazardous. No MSDS required.

APPLICATIONS

FAM69A (T-17) is recommended for detection of FAM69A of mouse, rat and human origin by Western Blotting (starting dilution 1:200, dilution range 1:100-1:1000), immunoprecipitation [1-2 µg per 100-500 µg of total protein (1 ml of cell lysate)], immunofluorescence (starting dilution 1:50, dilution range 1:50-1:500) and solid phase ELISA (starting dilution 1:30, dilution range 1:30-1:3000); non cross-reactive with FAM69B.

FAM69A (T-17) is also recommended for detection of FAM69A in additional species, including equine, canine, bovine and porcine.

Suitable for use as control antibody for FAM69A siRNA (h): sc-78679, FAM69A siRNA (m): sc-108868, FAM69A shRNA Plasmid (h): sc-78679-SH, FAM69A shRNA Plasmid (m): sc-108868-SH, FAM69A shRNA (h) Lentiviral Particles: sc-78679-V and FAM69A shRNA (m) Lentiviral Particles: sc-108868-V.

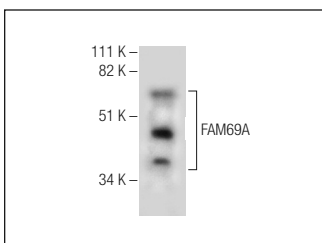
Molecular Weight of FAM69A isoforms: 49/19 kDa.

Positive Controls: HL-60 whole cell lysate: sc-2209.

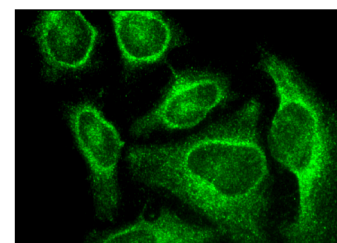
RECOMMENDED SECONDARY REAGENTS

To ensure optimal results, the following support (secondary) reagents are recommended: 1) Western Blotting: use donkey anti-goat IgG-HRP: sc-2020 (dilution range: 1:2000-1:100,000) or Cruz Marker™ compatible donkey anti-goat IgG-HRP: sc-2033 (dilution range: 1:2000-1:5000), Cruz Marker™ Molecular Weight Standards: sc-2035, TBS Blotto A Blocking Reagent: sc-2333 and Western Blotting Luminol Reagent: sc-2048. 2) Immunoprecipitation: use Protein A/G PLUS-Agarose: sc-2003 (0.5 ml agarose/2.0 ml). 3) Immunofluorescence: use donkey anti-goat IgG-FITC: sc-2024 (dilution range: 1:100-1:400) or donkey anti-goat IgG-TR: sc-2783 (dilution range: 1:100-1:400) with UltraCruz™ Mounting Medium: sc-24941.

DATA



FAM69A (T-17): sc-242768. Western blot analysis of FAM69A expression in HL-60 whole cell lysate.



FAM69A (T-17): sc-242768. Immunofluorescence staining of methanol-fixed HeLa cells showing cytoplasmic localization.

RESEARCH USE

For research use only, not for use in diagnostic procedures.

PROTOCOLS

See our web site at www.scbt.com or our catalog for detailed protocols and support products.