

ITBA1 (N-14): sc-243113

BACKGROUND

ITBA1, also known as TMEM187 (transmembrane protein 187) is a 261 amino acid multi-pass membrane protein that is ubiquitously expressed. The ITBA1 gene consists of two exons, is conserved in chimpanzee, canine, bovine and zebrafish, and maps to human chromosome Xq28. The X and Y chromosomes are the human sex chromosomes. Chromosome X consists of about 153 million base pairs and nearly 1,000 genes. The combination of an X and Y chromosome lead to normal male development while two copies of X lead to normal female development. There are a number of conditions related to an unusual number and combination of sex chromosomes being inherited. More than one copy of the X chromosome with a Y chromosome causes Klinefelter's syndrome. A single copy of X alone leads to Turner's syndrome. More than 2 copies of the X chromosome, in the absence of a Y chromosome, is known as Triple X syndrome. Color blindness, hemophilia, and Duchenne muscular dystrophy are well known X chromosome-linked conditions which affect males more frequently as males carry a single X chromosome

REFERENCES

- Zoppè, M., Frattini, A., Faranda, S. and Vezzoni, P. 1996. The complete sequence of the host cell factor 1 (HCFC1) gene and its promoter: a role for YY1 transcription factor in the regulation of its expression. *Genomics* 34: 85-91.
- Faranda, S., Frattini, A., Zucchi, I., Patrosso, C., Milanese, L., Montagna, C. and Vezzoni, P. 1996. Characterization and fine localization of two new genes in Xq28 using the genomic sequence/EST database screening approach. *Genomics* 34: 323-327.
- Bernardino-Sgherri, J., Flagiello, D. and Dutrillaux, B. 2002. Overall DNA methylation and chromatin structure of normal and abnormal X chromosomes. *Cytogenet. Genome Res.* 99: 85-91.
- Hayashi, T., Kubo, A., Takeuchi, T., Gekka, T., Goto-Omoto, S. and Kitahara, K. 2006. Novel form of a single X-linked visual pigment gene in a unique dichromatic color-vision defect. *Vis. Neurosci.* 23: 411-417.
- Denoëud, F., Kapranov, P., Ucla, C., Frankish, A., Castelo, R., Drenkow, J., Lagarde, J., Alioto, T., Manzano, C., Chrast, J., Dike, S., Wyss, C., Taylor, R., Hance, Z., Foissac, S., Myers, R.M., Rogers, J. and Reymond, A. 2007. Prominent use of distal 5' transcription start sites and discovery of a large number of additional exons in ENCODE regions. *Genome Res.* 17: 746-759.
- Augui, S., Fillion, G.J., Huart, S., Nora, E., Guggiari, M., Maresca, M., Heard, E. and Stewart, A.F. 2007. Sensing X chromosome pairs before X inactivation via a novel X-pairing region of the Xic. *Science* 318: 1632-1636.

CHROMOSOMAL LOCATION

Genetic locus: TMEM187 (human) mapping to Xq28.

SOURCE

ITBA1 (N-14) is an affinity purified goat polyclonal antibody raised against a peptide mapping near the N-terminus of ITBA1 of human origin.

RESEARCH USE

For research use only, not for use in diagnostic procedures.

PRODUCT

Each vial contains 200 µg IgG in 1.0 ml of PBS with < 0.1% sodium azide and 0.1% gelatin.

Blocking peptide available for competition studies, sc-243113 P, (100 µg peptide in 0.5 ml PBS containing < 0.1% sodium azide and 0.2% BSA).

APPLICATIONS

ITBA1 (N-14) is recommended for detection of ITBA1 of human origin by Western Blotting (starting dilution 1:200, dilution range 1:100-1:1000), immunoprecipitation [1-2 µg per 100-500 µg of total protein (1 ml of cell lysate)], immunofluorescence (starting dilution 1:50, dilution range 1:50-1:500) and solid phase ELISA (starting dilution 1:30, dilution range 1:30-1:3000).

ITBA1 (N-14) is also recommended for detection of ITBA1 in additional species, including porcine.

Suitable for use as control antibody for ITBA1 siRNA (h): sc-91148, ITBA1 shRNA Plasmid (h): sc-91148-SH and ITBA1 shRNA (h) Lentiviral Particles: sc-91148-V.

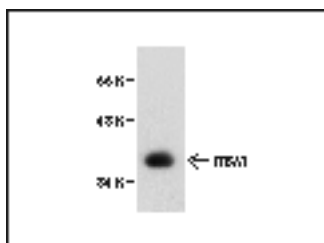
Molecular Weight of ITBA1: 29 kDa.

Positive Controls: A549 cell lysate: sc-2413.

RECOMMENDED SECONDARY REAGENTS

To ensure optimal results, the following support (secondary) reagents are recommended: 1) Western Blotting: use donkey anti-goat IgG-HRP: sc-2020 (dilution range: 1:2000-1:100,000) or Cruz Marker™ compatible donkey anti-goat IgG-HRP: sc-2033 (dilution range: 1:2000-1:5000), Cruz Marker™ Molecular Weight Standards: sc-2035, TBS Blotting A Blocking Reagent: sc-2333 and Western Blotting Luminol Reagent: sc-2048. 2) Immunoprecipitation: use Protein A/G PLUS-Agarose: sc-2003 (0.5 ml agarose/2.0 ml). 3) Immunofluorescence: use donkey anti-goat IgG-FITC: sc-2024 (dilution range: 1:100-1:400) or donkey anti-goat IgG-TR: sc-2783 (dilution range: 1:100-1:400) with UltraCruz™ Mounting Medium: sc-24941.

DATA



ITBA1 (N-14): sc-243113. Western Blotting of ITBA1 expression in A549 cells cell lysate.

STORAGE

Store at 4° C, **DO NOT FREEZE**. Stable for one year from the date of shipment. Non-hazardous. No MSDS required.