

# LCE6A (S-15): sc-243238

## BACKGROUND

LCE6A (late cornified envelope protein 6A), also known as C1orf44, is an 80 amino acid protein belonging to the LCE family. The LCE gene cluster within the epidermal differentiation complex on human chromosome 1 and mouse chromosome 3 contains multiple conserved genes encoding stratum-corneum proteins. Within the LCE cluster, genes form "groups" based on chromosomal position and protein homology. LCE6A is a precursor of the cornified envelope of the stratum corneum and belongs to the LCE cluster present on human chromosome 1q21. Chromosome 1 is the largest human chromosome spanning about 260 million base pairs and making up 8% of the human genome. There are about 3,000 genes on chromosome 1, and considering the great number of genes there are also a large number of diseases associated with chromosome 1, including Stickler syndrome, Parkinsons and Gaucher disease.

## REFERENCES

- Weise, A., Starke, H., Mrasek, K., Claussen, U. and Liehr, T. 2005. New insights into the evolution of chromosome 1. *Cytogenet. Genome Res.* 108: 217-222.
- Jackson, B., Tilli, C.M., Hardman, M.J., Avilion, A.A., MacLeod, M.C., Ashcroft, G.S. and Byrne, C. 2005. Late cornified envelope family in differentiating epithelia—response to calcium and ultraviolet irradiation. *J. Invest. Dermatol.* 124: 1062-1070.
- Tong, L., Corrales, R.M., Chen, Z., Villarreal, A.L., De Paiva, C.S., Beuerman, R., Li, D.Q. and Pflugfelder, S.C. 2006. Expression and regulation of cornified envelope proteins in human corneal epithelium. *Invest. Ophthalmol. Vis. Sci.* 47: 1938-1946.
- Gregory, S.G., Barlow, K.F., McLay, K.E., Kaul, R., Swarbreck, D., Dunham, A., Scott, C.E., Howe, K.L., Woodfine, K., Spencer, C.C., Jones, M.C., Gillson, C., Searle, S., Zhou, Y., Kokocinski, F., McDonald, L., Evans, R., Phillips, K., Atkinson, A., Cooper, R., Jones, C., Hall, R.E., et al. 2006. The DNA sequence and biological annotation of human chromosome 1. *Nature* 441: 315-321.
- Sharma, M., Mehla, K., Batra, J. and Ghosh, B. 2007. Association of a chromosome 1q21 locus in close proximity to a late cornified envelope-like proline-rich 1 (LELP1) gene with total serum IgE levels. *J. Hum. Genet.* 52: 378-383.
- Bowes, J., Flynn, E., Ho, P., Aly, B., Morgan, A.W., Marzo-Ortega, H., Coates, L., McManus, R., Ryan, A.W., Kane, D., Korendowych, E., McHugh, N., FitzGerald, O., Packham, J., Bruce, I.N. and Barton, A. 2010. Variants in linkage disequilibrium with the late cornified envelope gene cluster deletion are associated with susceptibility to psoriatic arthritis. *Ann. Rheum. Dis.* 69: 2199-2203.

## CHROMOSOMAL LOCATION

Genetic locus: LCE6A (human) mapping to 1q21.3.

## SOURCE

LCE6A (S-15) is an affinity purified goat polyclonal antibody raised against a peptide mapping at the N-terminus of LCE6A of human origin.

## PRODUCT

Each vial contains 200 µg IgG in 1.0 ml of PBS with < 0.1% sodium azide and 0.1% gelatin.

Blocking peptide available for competition studies, sc-243238 P, (100 µg peptide in 0.5 ml PBS containing < 0.1% sodium azide and 0.2% BSA).

## APPLICATIONS

LCE6A (S-15) is recommended for detection of LCE6A of human origin by Western Blotting (starting dilution 1:200, dilution range 1:100-1:1000), immunoprecipitation [1-2 µg per 100-500 µg of total protein (1 ml of cell lysate)], immunofluorescence (starting dilution 1:50, dilution range 1:50-1:500) and solid phase ELISA (starting dilution 1:30, dilution range 1:30-1:3000).

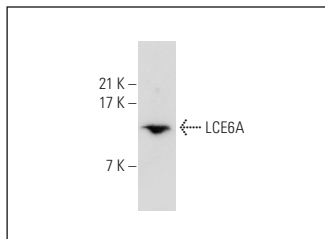
Molecular Weight of LCE6A: 9 kDa.

Positive Controls: human skin extract: sc-363777.

## RECOMMENDED SECONDARY REAGENTS

To ensure optimal results, the following support (secondary) reagents are recommended: 1) Western Blotting: use donkey anti-goat IgG-HRP: sc-2020 (dilution range: 1:2000-1:100,000) or Cruz Marker™ compatible donkey anti-goat IgG-HRP: sc-2033 (dilution range: 1:2000-1:5000), Cruz Marker™ Molecular Weight Standards: sc-2035, TBS Blotto A Blocking Reagent: sc-2333 and Western Blotting Luminol Reagent: sc-2048. 2) Immunoprecipitation: use Protein A/G PLUS-Agarose: sc-2003 (0.5 ml agarose/2.0 ml). 3) Immunofluorescence: use donkey anti-goat IgG-FITC: sc-2024 (dilution range: 1:100-1:400) or donkey anti-goat IgG-TR: sc-2783 (dilution range: 1:100-1:400) with UltraCruz™ Mounting Medium: sc-24941.

## DATA



LCE6A (S-15): sc-243238. Western blot analysis of LCE6A expression in human skin tissue extract.

## STORAGE

Store at 4° C, \*\*DO NOT FREEZE\*\*. Stable for one year from the date of shipment. Non-hazardous. No MSDS required.

## RESEARCH USE

For research use only, not for use in diagnostic procedures.

## PROTOCOLS

See our web site at [www.scbt.com](http://www.scbt.com) or our catalog for detailed protocols and support products.