

CCDC184 (E-18): sc-243290

BACKGROUND

Encoding over 1,100 genes within 132 million bases, chromosome 12 makes up about 4.5% of the human genome. A number of skeletal deformities are linked to chromosome 12 including hypochondrogenesis, achondrogenesis and Kniest dysplasia. Noonan syndrome, which includes heart and facial developmental defects among the primary symptoms, is caused by a mutant form of PTPN11 gene product, SH-PTP2. Chromosome 12 is also home to a homeobox gene cluster which encodes crucial transcription factors for morphogenesis, and the natural killer complex gene cluster encoding C-type lectin proteins which mediate the NK cell response to MHC I interaction. Trisomy 12p leads to facial development defects, seizure disorders and a host of other symptoms varying in severity depending on the extent of mosaicism and is most severe in cases of complete trisomy. The CCDC184 gene product has been provisionally designated LOC387856 pending further characterization.

REFERENCES

- Allen, T.L., et al. 1996. Cytogenetic and molecular analysis in trisomy 12p. *Am. J. Med. Genet.* 63: 250-256.
- Yang, W. and Cole, W.G. 1998. Low basal transcripts of the COL2A1 collagen gene from lymphoblasts show alternative splicing of exon 12 in the Kniest form of spondyloepiphyseal dysplasia. *Hum. Mutat.* 1: S1-S2.
- Trowsdale, J., et al. 2001. The genomic context of natural killer receptor extended gene families. *Immunol. Rev.* 181: 20-38.
- Zumkeller, W., et al. 2004. Genotype/phenotype analysis in a patient with pure and complete trisomy 12p. *Am. J. Med. Genet. A* 129: 261-264.
- Kelley, J., et al. 2005. Comparative genomics of natural killer cell receptor gene clusters. *PLoS Genet.* 1: e27.
- Nishimura, G., et al. 2005. The phenotypic spectrum of COL2A1 mutations. *Hum. Mutat.* 26: 36-43.
- Segel, R., et al. 2006. The natural history of trisomy 12p. *Am. J. Med. Genet. A* 140: 695-703.

CHROMOSOMAL LOCATION

Genetic locus: CCDC184 (human) mapping to 12q13.11; Ccdc184 (mouse) mapping to 15 F1.

SOURCE

CCDC184 (E-18) is an affinity purified goat polyclonal antibody raised against a peptide mapping near the N-terminus of CCDC184 of human origin.

PRODUCT

Each vial contains 200 µg IgG in 1.0 ml of PBS with < 0.1% sodium azide and 0.1% gelatin.

Blocking peptide available for competition studies, sc-243290 P, (100 µg peptide in 0.5 ml PBS containing < 0.1% sodium azide and 0.2% BSA).

APPLICATIONS

CCDC184 (E-18) is recommended for detection of CCDC184 of mouse, rat and human origin by Western Blotting (starting dilution 1:200, dilution range 1:100-1:1000), immunoprecipitation [1-2 µg per 100-500 µg of total protein (1 ml of cell lysate)], immunofluorescence (starting dilution 1:50, dilution range 1:50-1:500) and solid phase ELISA (starting dilution 1:30, dilution range 1:30-1:3000).

CCDC184 (E-18) is also recommended for detection of CCDC184 in additional species, including equine, canine and bovine.

Suitable for use as control antibody for CCDC184 siRNA (h): sc-95826, CCDC184 siRNA (m): sc-140955, CCDC184 shRNA Plasmid (h): sc-95826-SH, CCDC184 shRNA Plasmid (m): sc-140955-SH, CCDC184 shRNA (h) Lentiviral Particles: sc-95826-V and CCDC184 shRNA (m) Lentiviral Particles: sc-140955-V.

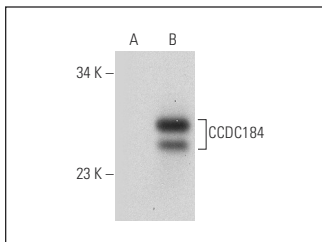
Molecular Weight of CCDC184: 20 kDa.

Positive Controls: CCDC184 (m): 293T Lysate: sc-118292.

RECOMMENDED SECONDARY REAGENTS

To ensure optimal results, the following support (secondary) reagents are recommended: 1) Western Blotting: use donkey anti-goat IgG-HRP: sc-2020 (dilution range: 1:2000-1:100,000) or Cruz Marker™ compatible donkey anti-goat IgG-HRP: sc-2033 (dilution range: 1:2000-1:5000), Cruz Marker™ Molecular Weight Standards: sc-2035, TBS Blotto A Blocking Reagent: sc-2333 and Western Blotting Luminol Reagent: sc-2048. 2) Immunoprecipitation: use Protein A/G PLUS-Agarose: sc-2003 (0.5 ml agarose/2.0 ml). 3) Immunofluorescence: use donkey anti-goat IgG-FITC: sc-2024 (dilution range: 1:100-1:400) or donkey anti-goat IgG-TR: sc-2783 (dilution range: 1:100-1:400) with UltraCruz™ Mounting Medium: sc-24941.

DATA



CCDC184 (E-18): sc-243290. Western blot analysis of CCDC184 expression in non-transfected: sc-117752 (A) and mouse CCDC184 transfected: sc-118292 (B) 293T whole cell lysates.

STORAGE

Store at 4° C, **DO NOT FREEZE**. Stable for one year from the date of shipment. Non-hazardous. No MSDS required.

RESEARCH USE

For research use only, not for use in diagnostic procedures.