

LRFN5 (C-15): sc-243323

BACKGROUND

LRFN5 (leucine-rich repeat and fibronectin type-III domain-containing protein 5), also known as C14orf146 or SALM5, is a 719 amino acid single-pass type I membrane protein that belongs to the LRFN family. Containing one fibronectin type-III domain, one Ig-like (immunoglobulin-like) domain, seven LRR (leucine-rich) repeats, one LRRCT domain, and one LRRNT domain, LRFN5 lacks a cytoplasmic PDZ-binding motif present in other LRFN family members. LRFN5 forms heteromeric complexes with LRFN1, LRFN2, LRFN3 and LRFN4, and has the ability to form homomeric complexes across cell junctions of adjacent cells. LRFN5 may promote neurite outgrowth in hippocampal neurons and may also function as a cell adhesion molecule, mediating homophilic cell to cell adhesion. The gene encoding LRFN5 maps to human chromosome 14q21.1.

REFERENCES

1. Heilig, R., Eckenberg, R., Petit, J.L., Fonknechten, N., Da Silva, C., Cattolico, L., Levy, M., Barbe, V., de Berardinis, V., Ureta-Vidal, A., Pelletier, E., Vico, V., Anthouard, V., Rowen, L., Madan, A., Qin, S., et al. 2003. The DNA sequence and analysis of human chromosome 14. *Nature* 421: 601-607.
2. Morimura, N., Inoue, T., Katayama, K. and Aruga, J. 2006. Comparative analysis of structure, expression and PSD95-binding capacity of Lrfn, a novel family of neuronal transmembrane proteins. *Gene* 380: 72-83.
3. Ko, J., Kim, S., Chung, H.S., Kim, K., Han, K., Kim, H., Jun, H., Kaang, B.K. and Kim, E. 2006. SALM synaptic cell adhesion-like molecules regulate the differentiation of excitatory synapses. *Neuron* 50: 233-245.
4. Seabold, G.K., Wang, P.Y., Chang, K., Wang, C.Y., Wang, Y.X., Petralia, R.S. and Wenthold, R.J. 2008. The SALM family of adhesion-like molecules forms heteromeric and homomeric complexes. *J. Biol. Chem.* 283: 8395-8405.
5. Wang, P.Y., Seabold, G.K. and Wenthold, R.J. 2008. Synaptic adhesion-like molecules (SALMs) promote neurite outgrowth. *Mol. Cell. Neurosci.* 39: 83-94.
6. Mah, W., Ko, J., Nam, J., Han, K., Chung, W.S. and Kim, E. 2010. Selected SALM (synaptic adhesion-like molecule) family proteins regulate synapse formation. *J. Neurosci.* 30: 5559-5568.

CHROMOSOMAL LOCATION

Genetic locus: LRFN5 (human) mapping to 14q21.1; Lrfn5 (mouse) mapping to 12 C1.

SOURCE

LRFN5 (C-15) is an affinity purified goat polyclonal antibody raised against a peptide mapping within a C-terminal cytoplasmic domain of LRFN5 of human origin.

PRODUCT

Each vial contains 200 µg IgG in 1.0 ml of PBS with < 0.1% sodium azide and 0.1% gelatin.

Blocking peptide available for competition studies, sc-243323 P, (100 µg peptide in 0.5 ml PBS containing < 0.1% sodium azide and 0.2% BSA).

APPLICATIONS

LRFN5 (C-15) is recommended for detection of LRFN5 of mouse, rat and human origin by Western Blotting (starting dilution 1:200, dilution range 1:100-1:1000), immunoprecipitation [1-2 µg per 100-500 µg of total protein (1 ml of cell lysate)], immunofluorescence (starting dilution 1:50, dilution range 1:50-1:500) and solid phase ELISA (starting dilution 1:30, dilution range 1:30-1:3000).

Suitable for use as control antibody for LRFN5 siRNA (h): sc-92232, LRFN5 siRNA (m): sc-149037, LRFN5 shRNA Plasmid (h): sc-92232-SH, LRFN5 shRNA Plasmid (m): sc-149037-SH, LRFN5 shRNA (h) Lentiviral Particles: sc-92232-V and LRFN5 shRNA (m) Lentiviral Particles: sc-149037-V.

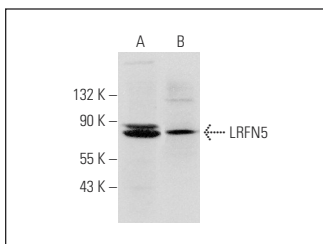
Molecular Weight of LRFN5: 79 kDa.

Positive Controls: Jurkat whole cell lysate: sc-2204 or NIH/3T3 whole cell lysate: sc-2210.

RECOMMENDED SECONDARY REAGENTS

To ensure optimal results, the following support (secondary) reagents are recommended: 1) Western Blotting: use donkey anti-goat IgG-HRP: sc-2020 (dilution range: 1:2000-1:100,000) or Cruz Marker™ compatible donkey anti-goat IgG-HRP: sc-2033 (dilution range: 1:2000-1:5000), Cruz Marker™ Molecular Weight Standards: sc-2035, TBS Blotto A Blocking Reagent: sc-2333 and Western Blotting Luminol Reagent: sc-2048. 2) Immunoprecipitation: use Protein A/G PLUS-Agarose: sc-2003 (0.5 ml agarose/2.0 ml). 3) Immunofluorescence: use donkey anti-goat IgG-FITC: sc-2024 (dilution range: 1:100-1:400) or donkey anti-goat IgG-TR: sc-2783 (dilution range: 1:100-1:400) with UltraCruz™ Mounting Medium: sc-24941.

DATA



LRFN5 (C-15): sc-243323. Western blot analysis of LRFN5 expression in Jurkat (A) and NIH/3T3 (B) whole cell lysates.

STORAGE

Store at 4° C, ****DO NOT FREEZE****. Stable for one year from the date of shipment. Non-hazardous. No MSDS required.

RESEARCH USE

For research use only, not for use in diagnostic procedures.

PROTOCOLS

See our web site at www.scbt.com or our catalog for detailed protocols and support products.