

neuroguidin (C-15): sc-243606

BACKGROUND

Neuroguidin (NGD), also known as eIF4E-binding protein, NGDN, LCP5 or lpd-2, is a 315 amino acid protein that interacts with eIF4E and CPEB, and plays a role in cytoplasmic polyadenylation element (CPE)-containing mRNA translational repression. A member of the SAS10 family, neuroguidin exists as two alternatively spliced isoforms and localizes to cytoplasm, nucleus and cell projections of axons, dendrites and filopodia. Neuroguidin may play a role in the development of the vertebrate nervous system via transcriptional regulation. Neuroguidin is expressed in brain, kidney, spleen, ovary and testis, and is encoded by a gene that maps to human chromosome 14q11.2. Chromosome 14 houses over 700 genes and comprises nearly 3.5% of the human genome. Chromosome 14 encodes the presenilin 1 (PSEN1) gene, which is one of the three key genes associated with the development of Alzheimer's disease (AD).

REFERENCES

1. Avramopoulos, D., Fallin, M.D. and Bassett, S.S. 2005. Linkage to chromosome 14q in Alzheimer's disease (AD) patients without psychotic symptoms. *Am. J. Med. Genet. B Neuropsychiatr. Genet.* 132B: 9-13.
2. Jung, M.Y., Lorenz, L. and Richter, J.D. 2006. Translational control by neuroguidin, a eukaryotic initiation factor 4E and CPEB binding protein. *Mol. Cell. Biol.* 26: 4277-4287.
3. Nousiainen, M., Sillje, H.H., Sauer, G., Nigg, E.A. and Körner, R. 2006. Phosphoproteome analysis of the human mitotic spindle. *Proc. Natl. Acad. Sci. USA* 103: 5391-5396.
4. Online Mendelian Inheritance in Man, OMIM™. 2007. Johns Hopkins University, Baltimore, MD. MIM Number: 610777. World Wide Web URL: <http://www.ncbi.nlm.nih.gov/omim/>
5. Sihn, C.R., Lee, Y.S., Jeong, J.S., Park, K. and Kim, S.H. 2008. CANu1, a novel nucleolar protein, accumulated on centromere in response to DNA damage. *Genes Cells* 13: 787-796.
6. Larner, A.J. and Doran, M. 2009. Genotype-phenotype relationships of presenilin-1 mutations in Alzheimer's disease: an update. *J. Alzheimers Dis.* 17: 259-265.

CHROMOSOMAL LOCATION

Genetic locus: NGDN (human) mapping to 14q11.2; Ngdn (mouse) mapping to 14 C3.

SOURCE

neuroguidin (C-15) is an affinity purified goat polyclonal antibody raised against a peptide mapping near the C-terminus of neuroguidin of human origin.

PRODUCT

Each vial contains 200 µg IgG in 1.0 ml of PBS with < 0.1% sodium azide and 0.1% gelatin.

Blocking peptide available for competition studies, sc-243606 P, (100 µg peptide in 0.5 ml PBS containing < 0.1% sodium azide and 0.2% BSA).

APPLICATIONS

neuroguidin (C-15) is recommended for detection of neuroguidin of mouse, rat and human origin by Western Blotting (starting dilution 1:200, dilution range 1:100-1:1000), immunoprecipitation [1-2 µg per 100-500 µg of total protein (1 ml of cell lysate)], immunofluorescence (starting dilution 1:50, dilution range 1:50-1:500) and solid phase ELISA (starting dilution 1:30, dilution range 1:30-1:3000).

neuroguidin (C-15) is also recommended for detection of neuroguidin in additional species, including equine, canine, bovine and porcine.

Suitable for use as control antibody for neuroguidin siRNA (m): sc-149933, neuroguidin shRNA Plasmid (m): sc-149933-SH and neuroguidin shRNA (m) Lentiviral Particles: sc-149933-V.

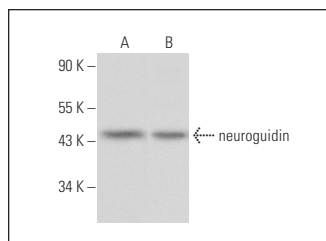
Molecular Weight of neuroguidin isoforms: 36/35 kDa.

Positive Controls: Hep G2 cell lysate: sc-2227 or HeLa whole cell lysate: sc-2200.

RECOMMENDED SECONDARY REAGENTS

To ensure optimal results, the following support (secondary) reagents are recommended: 1) Western Blotting: use donkey anti-goat IgG-HRP: sc-2020 (dilution range: 1:2000-1:100,000) or Cruz Marker™ compatible donkey anti-goat IgG-HRP: sc-2033 (dilution range: 1:2000-1:5000), Cruz Marker™ Molecular Weight Standards: sc-2035, TBS Blotto A Blocking Reagent: sc-2333 and Western Blotting Luminol Reagent: sc-2048. 2) Immunoprecipitation: use Protein A/G PLUS-Agarose: sc-2003 (0.5 ml agarose/2.0 ml). 3) Immunofluorescence: use donkey anti-goat IgG-FITC: sc-2024 (dilution range: 1:100-1:400) or donkey anti-goat IgG-TR: sc-2783 (dilution range: 1:100-1:400) with UltraCruz™ Mounting Medium: sc-24941.

DATA



neuroguidin (C-15): sc-243606. Western blot analysis of neuroguidin expression in Hep G2 (A) and HeLa (B) whole cell lysates.

STORAGE

Store at 4° C, **DO NOT FREEZE**. Stable for one year from the date of shipment. Non-hazardous. No MSDS required.

RESEARCH USE

For research use only, not for use in diagnostic procedures.