

PRDM11 (E-19): sc-243859

BACKGROUND

The PR-domain containing proteins (PRDMs) have a common involvement in the modulation of gene activities. A PR-domain family member usually produces two products, called PR-plus and PR-minus, which differ by the presence or absence of the PR domain, respectively. The PR-plus product is underexpressed or disrupted in cancer cells, whereas the PR-minus product is present or overexpressed in cancer cells. This imbalance in the amount of the two products, which is a result of either genetic or epigenetic events, appears to be a determining factor of malignancy. PRDM11 (PR domain-containing protein 11), also known as PFM8, is a 511 amino acid protein that exists as 2 alternatively spliced isoforms and belongs to the PRDM family. The gene encoding PRDM11 localizes to chromosome 11p11.2 within the minimal liver tumor suppressor region.

REFERENCES

- Liu, L., et al. 1997. The retinoblastoma interacting zinc finger gene RIZ produces a PR domain-lacking product through an internal promoter. *J. Biol. Chem.* 272: 2984-2991.
- Huang, S. 1999. The retinoblastoma protein-interacting zinc finger gene RIZ in 1p36-linked cancers. *Front. Biosci.* 4: D528-D532.
- Jiang, G.L., et al. 2000. The yin-yang of PR-domain family genes in tumorigenesis. *Histol. Histopathol.* 15: 109-117.
- Nagase, T., et al. 2000. Prediction of the coding sequences of unidentified human genes. XV. The complete sequences of 100 new cDNA clones from brain which code for large proteins *in vitro*. *DNA Res.* 6: 337-345.
- Strausberg, R.L., et al. 2002. Generation and initial analysis of more than 15,000 full-length human and mouse cDNA sequences. *Proc. Natl. Acad. Sci. USA* 99: 16899-16903.
- Ricketts, S.L., et al. 2003. Identification of three 11p11.2 candidate liver tumor suppressors through analysis of known human genes. *Mol. Carcinog.* 36: 90-99.

CHROMOSOMAL LOCATION

Genetic locus: PRDM11 (human) mapping to 11p11.2.

SOURCE

PRDM11 (E-19) is an affinity purified goat polyclonal antibody raised against a peptide mapping within an internal region of PRDM11 of human origin.

PRODUCT

Each vial contains 200 µg IgG in 1.0 ml of PBS with < 0.1% sodium azide and 0.1% gelatin.

Blocking peptide available for competition studies, sc-243859 P, (100 µg peptide in 0.5 ml PBS containing < 0.1% sodium azide and 0.2% BSA).

STORAGE

Store at 4° C, ****DO NOT FREEZE****. Stable for one year from the date of shipment. Non-hazardous. No MSDS required.

APPLICATIONS

PRDM11 (E-19) is recommended for detection of PRDM11 of human origin by Western Blotting (starting dilution 1:200, dilution range 1:100-1:1000), immunoprecipitation [1-2 µg per 100-500 µg of total protein (1 ml of cell lysate)], immunofluorescence (starting dilution 1:50, dilution range 1:50-1:500) and solid phase ELISA (starting dilution 1:30, dilution range 1:30-1:3000); non cross-reactive with other PRDM family members.

PRDM11 (E-19) is also recommended for detection of PRDM11 in additional species, including equine, canine, bovine and porcine.

Suitable for use as control antibody for PRDM11 siRNA (h): sc-96801, PRDM11 shRNA Plasmid (h): sc-96801-SH and PRDM11 shRNA (h) Lentiviral Particles: sc-96801-V.

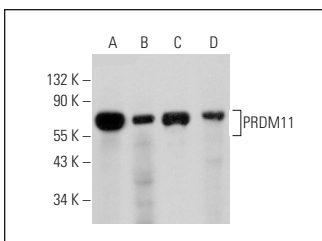
Molecular Weight of PRDM11 isoforms: 58/54 kDa.

Positive Controls: human kidney extract: sc-363764, human skeletal muscle extract: sc-363776 or human spleen extract: sc-363779.

RECOMMENDED SECONDARY REAGENTS

To ensure optimal results, the following support (secondary) reagents are recommended: 1) Western Blotting: use donkey anti-goat IgG-HRP: sc-2020 (dilution range: 1:2000-1:100,000) or Cruz Marker™ compatible donkey anti-goat IgG-HRP: sc-2033 (dilution range: 1:2000-1:5000), Cruz Marker™ Molecular Weight Standards: sc-2035, TBS Blotto A Blocking Reagent: sc-2333 and Western Blotting Luminol Reagent: sc-2048. 2) Immunoprecipitation: use Protein A/G PLUS-Agarose: sc-2003 (0.5 ml agarose/2.0 ml). 3) Immunofluorescence: use donkey anti-goat IgG-FITC: sc-2024 (dilution range: 1:100-1:400) or donkey anti-goat IgG-TR: sc-2783 (dilution range: 1:100-1:400) with UltraCruz™ Mounting Medium: sc-24941.

DATA



PRDM11 (E-19): sc-243859. Western blot analysis of PRDM11 expression in human kidney (A), human skeletal muscle (B), human testis (C) and human spleen (D) tissue extracts.

RESEARCH USE

For research use only, not for use in diagnostic procedures.

MONOS
Satisfaction
Guaranteed

Try **PRDM11 (G-12): sc-398876**, our highly recommended monoclonal alternative to PRDM11 (E-19).