

Rab 28 (I-17): sc-243915

BACKGROUND

RAS-related GTPases are GTP-dependent switches that operate signaling pathways in cell growth, metabolism and organelle trafficking. Rab 28, also known as MGC41862, is a 221 amino acid protein that belongs to the small GTPase superfamily and the Rab family. Rab 28 is only distantly related to other Rab family members, sharing 31 to 33% amino acid identity with Rab 1A, Rab 6, Rab 11 and Rab 13. Rab 28 is expressed as two isoforms, designated S and L respectively, that are produced by alternative splicing events. Isoform S is detected in most tissues including cortex, liver, kidney, skeletal muscle, adipose tissue, testis and urothelium, where as isoform L is predominantly expressed in testis. Existing as two alternatively spliced isoforms, the Rab 28 gene is conserved in chimpanzee, canine, bovine, mouse, rat, chicken and *C. elegans*, and maps to human chromosome 4p15.33. Pseudogenes of the Rab 28 gene are found on chromosomes 9 and X.

CHROMOSOMAL LOCATION

Genetic locus: RAB28 (human) mapping to 4p15.33; Rab28 (mouse) mapping to 5 B3.

SOURCE

Rab 28 (I-17) is an affinity purified goat polyclonal antibody raised against a peptide mapping within an internal region of Rab 28 of human origin.

PRODUCT

Each vial contains 200 µg IgG in 1.0 ml of PBS with < 0.1% sodium azide and 0.1% gelatin.

Blocking peptide available for competition studies, sc-243915 P, (100 µg peptide in 0.5 ml PBS containing < 0.1% sodium azide and 0.2% BSA).

STORAGE

Store at 4° C, ****DO NOT FREEZE****. Stable for one year from the date of shipment. Non-hazardous. No MSDS required.

APPLICATIONS

Rab 28 (I-17) is recommended for detection of Rab 28 of mouse, rat and human origin by Western Blotting (starting dilution 1:200, dilution range 1:100-1:1000), immunoprecipitation [1-2 µg per 100-500 µg of total protein (1 ml of cell lysate)], immunofluorescence (starting dilution 1:50, dilution range 1:50-1:500) and solid phase ELISA (starting dilution 1:30, dilution range 1:30-1:3000); non cross-reactive with other Rab family members.

Rab 28 (I-17) is also recommended for detection of Rab 28 in additional species, including bovine, porcine and avian.

Suitable for use as control antibody for Rab 28 siRNA (h): sc-89156, Rab 28 siRNA (m): sc-152632, Rab 28 shRNA Plasmid (h): sc-89156-SH, Rab 28 shRNA Plasmid (m): sc-152632-SH, Rab 28 shRNA (h) Lentiviral Particles: sc-89156-V and Rab 28 shRNA (m) Lentiviral Particles: sc-152632-V.

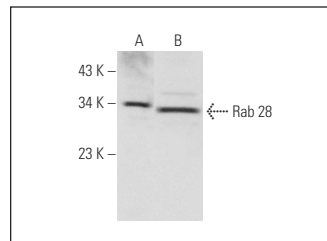
Molecular Weight of Rab 28: 25 kDa.

Positive Controls: K-562 whole cell lysate: sc-2203 or A2058 whole cell lysate: sc-364178.

RECOMMENDED SECONDARY REAGENTS

To ensure optimal results, the following support (secondary) reagents are recommended: 1) Western Blotting: use donkey anti-goat IgG-HRP: sc-2020 (dilution range: 1:2000-1:100,000) or Cruz Marker™ compatible donkey anti-goat IgG-HRP: sc-2033 (dilution range: 1:2000-1:5000), Cruz Marker™ Molecular Weight Standards: sc-2035, TBS Blotto A Blocking Reagent: sc-2333 and Western Blotting Luminol Reagent: sc-2048. 2) Immunoprecipitation: use Protein A/G PLUS-Agarose: sc-2003 (0.5 ml agarose/2.0 ml). 3) Immunofluorescence: use donkey anti-goat IgG-FITC: sc-2024 (dilution range: 1:100-1:400) or donkey anti-goat IgG-TR: sc-2783 (dilution range: 1:100-1:400) with UltraCruz™ Mounting Medium: sc-24941.

DATA



Rab 28 (I-17): sc-243915. Western blot analysis of Rab 28 expression in K-562 (A) and A2058 (B) whole cell lysates.

RESEARCH USE

For research use only, not for use in diagnostic procedures.

PROTOCOLS

See our web site at www.scbt.com or our catalog for detailed protocols and support products.


 MONOS
Satisfaction
Guaranteed

Try **Rab 28 (2C6): sc-517146**, our highly recommended monoclonal alternative to Rab 28 (I-17).