

RBM19 (K-17): sc-243935

BACKGROUND

Proteins containing RNA recognition motifs, including various hnRNP proteins, are implicated in the regulation of alternative splicing and protein components of snRNPs. The RBM (RNA-binding motif) gene family encodes proteins with an RNA binding motif that have been suggested to play a role in the modulation of apoptosis. RBM19 (RNA-binding motif protein 19) is a 960 amino acid member of the RRM MRD1 family that contains 6 RRM (RNA recognition motif) domains. Playing a role in embryo pre-implantation development, RBM19 may be involved in regulating ribosome biogenesis. The RBM19 gene is conserved in chimpanzee, canine, bovine, mouse, rat, chicken, zebrafish, fruit fly, mosquito, *C. elegans*, *S. pombe*, *S. cerevisiae*, *K. lactis*, *E. gossypii*, *M. grisea*, *N. crassa*, *A. thaliana*, rice and *P. falciparum*, and maps to human chromosome 12q24.13.

REFERENCES

1. Varani, G. and Nagai, K. 1998. RNA recognition by RNP proteins during RNA processing. *Annu. Rev. Biophys. Biomol. Struct.* 27: 407-445.
2. Mayer, A.N. and Fishman, M.C. 2003. Nil per os encodes a conserved RNA recognition motif protein required for morphogenesis and cytodifferentiation of digestive organs in zebrafish. *Development* 130: 3917-3928.
3. Colland, F., et al. 2004. Functional proteomics mapping of a human signaling pathway. *Genome Res.* 14: 1324-1332.
4. Maris, C., et al. 2005. The RNA recognition motif, a plastic RNA-binding platform to regulate post-transcriptional gene expression. *FEBS J.* 272: 2118-2131.
5. Lorenzen, J.A., et al. 2005. Rbm19 is a nucleolar protein expressed in crypt/progenitor cells of the intestinal epithelium. *Gene Expr. Patterns* 6: 45-56.

CHROMOSOMAL LOCATION

Genetic locus: RBM19 (human) mapping to 12q24.13; Rbm19 (mouse) mapping to 5 F.

SOURCE

RBM19 (K-17) is an affinity purified goat polyclonal antibody raised against a peptide mapping near the C-terminus of RBM19 of human origin.

PRODUCT

Each vial contains 200 µg IgG in 1.0 ml of PBS with < 0.1% sodium azide and 0.1% gelatin.

Blocking peptide available for competition studies, sc-243935 P, (100 µg peptide in 0.5 ml PBS containing < 0.1% sodium azide and 0.2% BSA).

STORAGE

Store at 4° C, **DO NOT FREEZE**. Stable for one year from the date of shipment. Non-hazardous. No MSDS required.

RESEARCH USE

For research use only, not for use in diagnostic procedures.

APPLICATIONS

RBM19 (K-17) is recommended for detection of RBM19 of mouse and human origin by Western Blotting (starting dilution 1:200, dilution range 1:100-1:1000), immunoprecipitation [1-2 µg per 100-500 µg of total protein (1 ml of cell lysate)], immunofluorescence (starting dilution 1:50, dilution range 1:50-1:500) and solid phase ELISA (starting dilution 1:30, dilution range 1:30-1:3000); non cross-reactive with other RBM family members.

RBM19 (K-17) is also recommended for detection of RBM19 in additional species, including equine, canine, bovine, porcine and avian.

Suitable for use as control antibody for RBM19 siRNA (h): sc-95661, RBM19 siRNA (m): sc-152732, RBM19 shRNA Plasmid (h): sc-95661-SH, RBM19 shRNA Plasmid (m): sc-152732-SH, RBM19 shRNA (h) Lentiviral Particles: sc-95661-V and RBM19 shRNA (m) Lentiviral Particles: sc-152732-V.

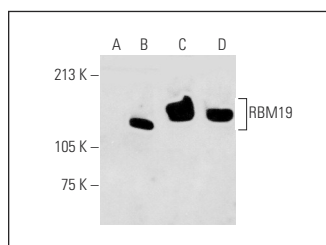
Molecular Weight of RBM19: 107 kDa.

Positive Controls: RBM19 (h): 293T Lysate: sc-177849, Jurkat whole cell lysate: sc-2204 or K-562 whole cell lysate: sc-2203.

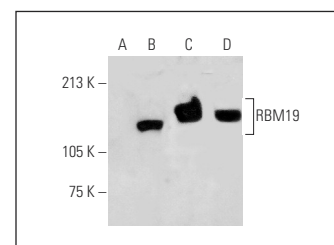
RECOMMENDED SECONDARY REAGENTS

To ensure optimal results, the following support (secondary) reagents are recommended: 1) Western Blotting: use donkey anti-goat IgG-HRP: sc-2020 (dilution range: 1:2000-1:100,000) or Cruz Marker™ compatible donkey anti-goat IgG-HRP: sc-2033 (dilution range: 1:2000-1:5000), Cruz Marker™ Molecular Weight Standards: sc-2035, TBS Blotto A Blocking Reagent: sc-2333 and Western Blotting Luminol Reagent: sc-2048. 2) Immunoprecipitation: use Protein A/G PLUS-Agarose: sc-2003 (0.5 ml agarose/2.0 ml). 3) Immunofluorescence: use donkey anti-goat IgG-FITC: sc-2024 (dilution range: 1:100-1:400) or donkey anti-goat IgG-TR: sc-2783 (dilution range: 1:100-1:400) with UltraCruz™ Mounting Medium: sc-24941.

DATA



RBM19 (K-17): sc-243935. Western blot analysis of RBM19 expression in non-transfected 293T: sc-117752 (A), human RBM19 transfected 293T: sc-177849 (B), Jurkat (C) and K-562 (D) whole cell lysates.



RBM19 (K-17): sc-243935. Western blot analysis of RBM19 expression in non-transfected 293T: sc-117752 (A), human RBM19 transfected 293T: sc-177850 (B), Jurkat (C) and K-562 (D) whole cell lysates.

PROTOCOLS

See our web site at www.scbt.com or our catalog for detailed protocols and support products.