

Rpp25 (C-16): sc-244048

BACKGROUND

Ribonuclease P (RNase P) and Ribonuclease MRP (RNase MRP) are small nuclear ribonucleoproteins (snRNPs) that act on RNA substrates *in vitro*. RNase P and RNase MRP, which accumulate in the nucleolus, have a similar RNA component and also have several protein subunits in common. RNase P, which consists of a complex of an RNA species, POP1, POP5, and at least seven Rpps, removes the 5' leader sequences from precursor tRNA molecules. RPP25 (ribonuclease P/MRP 25kDa subunit) is a 199 amino acid nuclear protein that belongs to the histone-like Alba family and functions as a component of nuclear RNase P and RNase MRP ribonucleoproteins. Rpp25 is encoded by a gene that maps to human chromosome 15q24.2 and mouse chromosome 9 B.

REFERENCES

- Jarrous, N., Eder, P.S., Guerrier-Takada, C., Hoog, C. and Altman, S. 1998. Autoantigenic properties of some protein subunits of catalytically active complexes of human ribonuclease P. *RNA* 4: 407-417.
- van Eenennaam, H., Jarrous, N., van Venrooij, W.J. and Pruijn, G.J. 2000. Architecture and function of the human endonucleases RNase P and RNase MRP. *IUBMB Life* 49: 265-272.
- van Eenennaam, H., van der Heijden, A., Janssen, R.J., van Venrooij, W.J. and Pruijn, G.J. 2001. Basic domains target protein subunits of the RNase MRP complex to the nucleolus independently of complex association. *Mol. Biol. Cell* 12: 3680-3689.
- Jiang, T., Guerrier-Takada, C. and Altman, S. 2001. Protein-RNA interactions in the subunits of human nuclear RNase P. *RNA* 7: 937-941.
- Guerrier-Takada, C., Eder, P.S., Gopalan, V. and Altman, S. 2002. Purification and characterization of Rpp25, an RNA-binding protein subunit of human ribonuclease P. *RNA* 8: 290-295.
- Welting, T.J., van Venrooij, W.J. and Pruijn, G.J. 2004. Mutual interactions between subunits of the human RNase MRP ribonucleoprotein complex. *Nucleic Acids Res.* 32: 2138-2146.
- Roberts, J.D., Chiche, J.D., Kolpa, E.M., Bloch, D.B. and Bloch, K.D. 2007. cGMP-dependent protein kinase I interacts with TRIM39R, a novel Rpp21 domain-containing TRIM protein. *Am. J. Physiol., Lung Cell Mol. Physiol.* 293: L903-L912.

CHROMOSOMAL LOCATION

Genetic locus: RPP25 (human) mapping to 15q24.2.

SOURCE

Rpp25 (C-16) is an affinity purified goat polyclonal antibody raised against a peptide mapping near the C-terminus of Rpp25 of human origin.

PRODUCT

Each vial contains 200 µg IgG in 1.0 ml of PBS with < 0.1% sodium azide and 0.1% gelatin.

Blocking peptide available for competition studies, sc-244048 P, (100 µg peptide in 0.5 ml PBS containing < 0.1% sodium azide and 0.2% BSA).

APPLICATIONS

Rpp25 (C-16) is recommended for detection of Rpp25 of human origin by Western Blotting (starting dilution 1:200, dilution range 1:100-1:1000), immunoprecipitation [1-2 µg per 100-500 µg of total protein (1 ml of cell lysate)], immunofluorescence (starting dilution 1:50, dilution range 1:50-1:500) and solid phase ELISA (starting dilution 1:30, dilution range 1:30-1:3000); non cross-reactive with other Rpp family members.

Suitable for use as control antibody for Rpp25 siRNA (h): sc-90130, Rpp25 shRNA Plasmid (h): sc-90130-SH and Rpp25 shRNA (h) Lentiviral Particles: sc-90130-V.

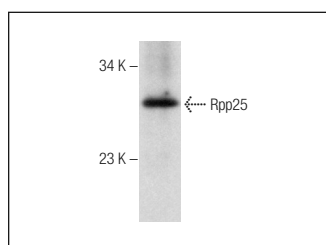
Molecular Weight of Rpp25: 21 kDa.

Positive Controls: Human heart tissue extract.

RECOMMENDED SECONDARY REAGENTS

To ensure optimal results, the following support (secondary) reagents are recommended: 1) Western Blotting: use donkey anti-goat IgG-HRP: sc-2020 (dilution range: 1:2000-1:100,000) or Cruz Marker™ compatible donkey anti-goat IgG-HRP: sc-2033 (dilution range: 1:2000-1:5000), Cruz Marker™ Molecular Weight Standards: sc-2035, TBS Blotto A Blocking Reagent: sc-2333 and Western Blotting Luminol Reagent: sc-2048. 2) Immunoprecipitation: use Protein A/G PLUS-Agarose: sc-2003 (0.5 ml agarose/2.0 ml). 3) Immunofluorescence: use donkey anti-goat IgG-FITC: sc-2024 (dilution range: 1:100-1:400) or donkey anti-goat IgG-TR: sc-2783 (dilution range: 1:100-1:400) with UltraCruz™ Mounting Medium: sc-24941.

DATA



Rpp25 (C-16): sc-244048. Western blot analysis of Rpp25 expression in human heart tissue extract.

STORAGE

Store at 4° C, **DO NOT FREEZE**. Stable for one year from the date of shipment. Non-hazardous. No MSDS required.

RESEARCH USE

For research use only, not for use in diagnostic procedures.

PROTOCOLS

See our web site at www.scbt.com or our catalog for detailed protocols and support products.