

SH3BP5L (N-17): sc-244125

BACKGROUND

SH3BP5L (SH3-binding domain protein 5-like) is a 393 amino acid protein that belongs to the SH3BP5 family. The SH3BP5L gene is conserved in chimpanzee, canine, bovine, mouse, rat and zebrafish, and maps to human chromosome 1q44. Duplication of the 1q32.1 to 1q44 region is associated with short stature, multiple minor anomalies and mental retardation. Chromosome 1 is the largest human chromosome spanning about 260 million base pairs and making up 8% of the human genome. There are about 3,000 genes on chromosome 1, and considering the great number of genes there are also a large number of diseases associated with chromosome 1. The MUTYH gene is located on chromosome 1 and is partially responsible for familial adenomatous polyposis. Stickler syndrome, Parkinsons, Gaucher disease and Usher syndrome are also associated with chromosome 1. A breakpoint has been identified in 1q which disrupts the DISC1 gene and is linked to schizophrenia. Aberrations in chromosome 1 are found in a variety of cancers including head and neck cancer, malignant melanoma and multiple myeloma.

REFERENCES

- Blackwood, D.H., et al. 2001. Schizophrenia and affective disorders— cosegregation with a translocation at chromosome 1q42 that directly disrupts brain-expressed genes: clinical and P300 findings in a family. *Am. J. Hum. Genet.* 69: 428-433.
- Weise, A., et al. 2005. New insights into the evolution of chromosome 1. *Cytogenet. Genome Res.* 108: 217-222.
- Marzin, Y., et al. 2006. Chromosome 1 abnormalities in multiple myeloma. *Anticancer Res.* 26: 953-959.
- Lans, H., et al. 2006. Cell biology: ageing nucleus gets out of shape. *Nature* 440: 32-34.
- Gregory, S.G., et al. 2006. The DNA sequence and biological annotation of human chromosome 1. *Nature* 441: 315-321.
- Hennah, W., et al. 2006. Genes and schizophrenia: beyond schizophrenia: the role of DISC1 in major mental illness. *Schizophr. Bull.* 32: 409-416.
- Balasubramanian, M., et al. 2009. Inverted duplication of 1q32.1 to 1q44 characterized by array CGH and review of distal 1q partial trisomy. *Am. J. Med. Genet. A* 149A: 793-797.

CHROMOSOMAL LOCATION

Genetic locus: SH3BP5L (human) mapping to 1q44.

SOURCE

SH3BP5L (N-17) is an affinity purified goat polyclonal antibody raised against a peptide mapping near the N-terminus of SH3BP5L of human origin.

PRODUCT

Each vial contains 200 µg IgG in 1.0 ml of PBS with < 0.1% sodium azide and 0.1% gelatin.

Blocking peptide available for competition studies, sc-244125 P, (100 µg peptide in 0.5 ml PBS containing < 0.1% sodium azide and 0.2% BSA).

APPLICATIONS

SH3BP5L (N-17) is recommended for detection of SH3BP5L of human origin by Western Blotting (starting dilution 1:200, dilution range 1:100-1:1000), immunoprecipitation [1-2 µg per 100-500 µg of total protein (1 ml of cell lysate)], immunofluorescence (starting dilution 1:50, dilution range 1:50-1:500) and solid phase ELISA (starting dilution 1:30, dilution range 1:30-1:3000).

SH3BP5L (N-17) is also recommended for detection of SH3BP5L in additional species, including equine, bovine and porcine.

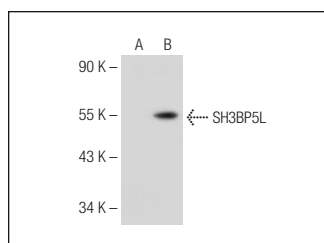
Suitable for use as control antibody for SH3BP5L siRNA (h): sc-88732, SH3BP5L shRNA Plasmid (h): sc-88732-SH and SH3BP5L shRNA (h) Lentiviral Particles: sc-88732-V.

Molecular Weight of SH3BP5L: 43 kDa.

RECOMMENDED SECONDARY REAGENTS

To ensure optimal results, the following support (secondary) reagents are recommended: 1) Western Blotting: use donkey anti-goat IgG-HRP: sc-2020 (dilution range: 1:2000-1:100,000) or Cruz Marker™ compatible donkey anti-goat IgG-HRP: sc-2033 (dilution range: 1:2000-1:5000), Cruz Marker™ Molecular Weight Standards: sc-2035, TBS Blotto A Blocking Reagent: sc-2333 and Western Blotting Luminol Reagent: sc-2048. 2) Immunoprecipitation: use Protein A/G PLUS-Agarose: sc-2003 (0.5 ml agarose/2.0 ml). 3) Immunofluorescence: use donkey anti-goat IgG-FITC: sc-2024 (dilution range: 1:100-1:400) or donkey anti-goat IgG-TR: sc-2783 (dilution range: 1:100-1:400) with UltraCruz™ Mounting Medium: sc-24941.

DATA



SH3BP5L (N-17): sc-244125. Western blot analysis of SH3BP5L expression in non-transfected: sc-117752 (A) and mouse SH3BP5L transfected: sc-125992 (B) 293T whole cell lysates.

STORAGE

Store at 4° C, **DO NOT FREEZE**. Stable for one year from the date of shipment. Non-hazardous. No MSDS required.

RESEARCH USE

For research use only, not for use in diagnostic procedures.

PROTOCOLS

See our web site at www.scbt.com or our catalog for detailed protocols and support products.