

# SKIV2L2 (T-19): sc-244142

## BACKGROUND

SKIV2L2 (superkiller viralicidic activity 2-like 2) is a 1,042 amino acid protein that belongs to the helicase family and the SKI2 subfamily. The SKIV2L2 protein localizes to nucleus, contains one helicase ATP-binding domain and one helicase C-terminal domain. SKIV2L2 is identified in the spliceosome C complex and may be involved in pre-mRNA splicing. SKIV2L2 is associated with the RNA exosome complex and involved in the 3' processing of the 7S pre-rRNA to the mature 5.8S rRNA. The SKIV2L2 gene is conserved in chimpanzee, canine, bovine, mouse, rat, chicken, zebrafish, fruit fly, mosquito, *C. elegans*, *S. pombe*, *S. cerevisiae*, *K. lactis*, *E. gossypii*, *M. grisea*, *N. crassa*, *A. thaliana* and rice, and maps to human chromosome 5q11.2. A mutation in SKIV2L2 in zebrafish causes defects in cell proliferation, suggesting that SKIV2L2 plays a role in regulating melanoblast proliferation during early stages of melanocyte regeneration.

## REFERENCES

- Andersen, J.S., et al. 2002. Directed proteomic analysis of the human nucleolus. *Curr. Biol.* 12: 1-11.
- Scherl, A., et al. 2002. Functional proteomic analysis of human nucleolus. *Mol. Biol. Cell* 13: 4100-4109.
- Gustafson, M.P., et al. 2005. Zcchc8 is a glycogen synthase kinase-3 substrate that interacts with RNA-binding proteins. *Biochem. Biophys. Res. Commun.* 338: 1359-1367.
- Yang, C.T., et al. 2007. Mutations in *gfpt1* and *skiv2l2* cause distinct stage-specific defects in larval melanocyte regeneration in zebrafish. *PLoS Genet.* 3: e88.
- Iwanami, N., et al. 2009. Ethylnitrosourea-induced thymus-defective mutants identify roles of KIAA1440, TRRAP, and SKIV2L2 in teleost organ development. *Eur. J. Immunol.* 39: 2606-2616.
- Ebmeier, C.C. and Taatjes, D.J. 2010. Activator-Mediator binding regulates Mediator-cofactor interactions. *Proc. Natl. Acad. Sci. USA* 107: 11283-11288.
- Umate, P., et al. 2011. Genome-wide comprehensive analysis of human helicases. *Commun. Integr. Biol.* 4: 118-137.

## CHROMOSOMAL LOCATION

Genetic locus: SKIV2L2 (human) mapping to 5q11.2; Skiv2l2 (mouse) mapping to 13 D2.2.

## SOURCE

SKIV2L2 (T-19) is an affinity purified goat polyclonal antibody raised against a peptide mapping within an internal region of SKIV2L2 of human origin.

## PRODUCT

Each vial contains 200 µg IgG in 1.0 ml of PBS with < 0.1% sodium azide and 0.1% gelatin.

Blocking peptide available for competition studies, sc-244142 P, (100 µg peptide in 0.5 ml PBS containing < 0.1% sodium azide and 0.2% BSA).

## APPLICATIONS

SKIV2L2 (T-19) is recommended for detection of SKIV2L2 of mouse, rat and human origin by Western Blotting (starting dilution 1:200, dilution range 1:100-1:1000), immunoprecipitation [1-2 µg per 100-500 µg of total protein (1 ml of cell lysate)], immunofluorescence (starting dilution 1:50, dilution range 1:50-1:500) and solid phase ELISA (starting dilution 1:30, dilution range 1:30-1:3000); non cross-reactive with SKIV2L.

SKIV2L2 (T-19) is also recommended for detection of SKIV2L2 in additional species, including equine, canine, bovine, porcine and avian.

Suitable for use as control antibody for SKIV2L2 siRNA (h): sc-91681, SKIV2L2 siRNA (m): sc-153477, SKIV2L2 shRNA Plasmid (h): sc-91681-SH, SKIV2L2 shRNA Plasmid (m): sc-153477-SH, SKIV2L2 shRNA (h) Lentiviral Particles: sc-91681-V and SKIV2L2 shRNA (m) Lentiviral Particles: sc-153477-V.

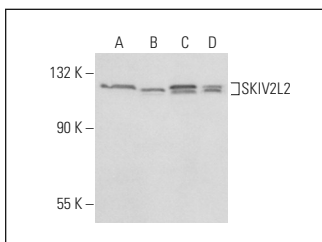
Molecular Weight of SKIV2L2: 118 kDa.

Positive Controls: HEK293 whole cell lysate: sc-45136, MCF7 whole cell lysate: sc-2206 or IMR-32 cell lysate: sc-2409.

## RECOMMENDED SECONDARY REAGENTS

To ensure optimal results, the following support (secondary) reagents are recommended: 1) Western Blotting: use donkey anti-goat IgG-HRP: sc-2020 (dilution range: 1:2000-1:100,000) or Cruz Marker™ compatible donkey anti-goat IgG-HRP: sc-2033 (dilution range: 1:2000-1:5000), Cruz Marker™ Molecular Weight Standards: sc-2035, TBS Blotto A Blocking Reagent: sc-2333 and Western Blotting Luminol Reagent: sc-2048. 2) Immunoprecipitation: use Protein A/G PLUS-Agarose: sc-2003 (0.5 ml agarose/2.0 ml). 3) Immunofluorescence: use donkey anti-goat IgG-FITC: sc-2024 (dilution range: 1:100-1:400) or donkey anti-goat IgG-TR: sc-2783 (dilution range: 1:100-1:400) with UltraCruz™ Mounting Medium: sc-24941.

## DATA



SKIV2L2 (T-19): sc-244142. Western blot analysis of SKIV2L2 expression in HEK293 (A), MCF7 (B), IMR-32 (C) and MDA-MB-468 (D) whole cell lysates.

## STORAGE

Store at 4° C, \*\*DO NOT FREEZE\*\*. Stable for one year from the date of shipment. Non-hazardous. No MSDS required.

## RESEARCH USE

For research use only, not for use in diagnostic procedures.