

SLC2A13 (C-16): sc-244166

BACKGROUND

SLC2A13 (solute carrier family 2 (facilitated glucose transporter), member 13) is a 648 multi-pass membrane protein that belongs to the major facilitator superfamily and the sugar transporter family. SLC2A13 is a H⁺-myo-inositol cotransporter that can also transport related stereoisomers. Human SLC2A13 shares 90% identity with its rat homolog. The rat sequence has 12 transmembrane domains, 3 N-glycosylation sites, several motifs important for glucose transport activity, and an endoplasmic reticulum retention signal and dileucine internalization signal in the N-terminal region. SLC2A13 has been shown to specifically transport myo-inositol but not hexoses, and decreasing the pH of the extracellular medium from 7.0 to 5.0 markedly increased transport activity. The SLC2A13 gene is conserved in chimpanzee, canine, bovine, mouse, rat, chicken, zebrafish, *C. elegans*, *S. pombe*, *K. lactis*, *E. gossypii*, *M. grisea*, *N. crassa*, *A. thaliana*, and rice.

REFERENCES

- Uldry, M., Ibberson, M., Horisberger, J.D., Chatton, J.Y., Riederer, B.M. and Thorens, B. 2001. Identification of a mammalian H⁺-myo-inositol symporter expressed predominantly in the brain. *EMBO J.* 20: 4467-4477.
- Online Mendelian Inheritance in Man, OMIM™. 2007. Johns Hopkins University, Baltimore, MD. MIM Number: 611036. World Wide Web URL: <http://www.ncbi.nlm.nih.gov/omim/>
- Gauci, S., Helbig, A.O., Slijper, M., Krijgsveld, J., Heck, A.J. and Mohammed, S. 2009. Lys-N and trypsin cover complementary parts of the phosphoproteome in a refined SCX-based approach. *Anal. Chem.* 81: 4493-4501.
- Di Daniel, E., Mok, M.H., Mead, E., Mutinelli, C., Zambello, E., Caberlotto, L.L., Pell, T.J., Langmead, C.J., Shah, A.J., Duddy, G., Kew, J.N. and Maycox, P.R. 2009. Evaluation of expression and function of the H⁺/myo-inositol transporter HMIT. *BMC Cell Biol.* 10: 54.
- Satake, W., Nakabayashi, Y., Mizuta, I., Hirota, Y., Ito, C., Kubo, M., Kawaguchi, T., Tsunoda, T., Watanabe, M., Takeda, A., Tomiyama, H., Nakashima, K., Hasegawa, K., Obata, F., Yoshikawa, T., Kawakami, H., Sakoda, S., Yamamoto, M., et al. 2009. Genome-wide association study identifies common variants at four loci as genetic risk factors for Parkinson's disease. *Nat. Genet.* 41: 1303-1307.

CHROMOSOMAL LOCATION

Genetic locus: SLC2A13 (human) mapping to 12q12; Slc2a13 (mouse) mapping to 15 E3.

SOURCE

SLC2A13 (C-16) is an affinity purified goat polyclonal antibody raised against a peptide mapping within a C-terminal cytoplasmic domain of SLC2A13 of human origin.

STORAGE

Store at 4° C, ****DO NOT FREEZE****. Stable for one year from the date of shipment. Non-hazardous. No MSDS required.

PRODUCT

Each vial contains 200 µg IgG in 1.0 ml of PBS with < 0.1% sodium azide and 0.1% gelatin.

Blocking peptide available for competition studies, sc-244166 P, (100 µg peptide in 0.5 ml PBS containing < 0.1% sodium azide and 0.2% BSA).

APPLICATIONS

SLC2A13 (C-16) is recommended for detection of SLC2A13 of mouse, rat and human origin by Western Blotting (starting dilution 1:200, dilution range 1:100-1:1000), immunoprecipitation [1-2 µg per 100-500 µg of total protein (1 ml of cell lysate)], immunofluorescence (starting dilution 1:50, dilution range 1:50-1:500) and solid phase ELISA (starting dilution 1:30, dilution range 1:30-1:3000).

SLC2A13 (C-16) is also recommended for detection of SLC2A13 in additional species, including canine, bovine, porcine and avian.

Suitable for use as control antibody for SLC2A13 siRNA (h): sc-96195, SLC2A13 siRNA (m): sc-153528, SLC2A13 shRNA Plasmid (h): sc-96195-SH, SLC2A13 shRNA Plasmid (m): sc-153528-SH, SLC2A13 shRNA (h) Lentiviral Particles: sc-96195-V and SLC2A13 shRNA (m) Lentiviral Particles: sc-153528-V.

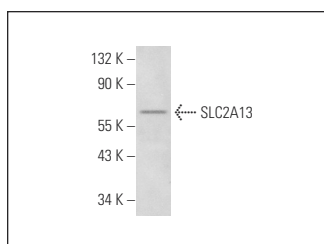
Molecular Weight of SLC2A13: 70 kDa.

Positive Controls: Jurkat whole cell lysate: sc-2204.

RECOMMENDED SECONDARY REAGENTS

To ensure optimal results, the following support (secondary) reagents are recommended: 1) Western Blotting: use donkey anti-goat IgG-HRP: sc-2020 (dilution range: 1:2000-1:100,000) or Cruz Marker™ compatible donkey anti-goat IgG-HRP: sc-2033 (dilution range: 1:2000-1:5000), Cruz Marker™ Molecular Weight Standards: sc-2035, TBS Blotto A Blocking Reagent: sc-2333 and Western Blotting Luminol Reagent: sc-2048. 2) Immunoprecipitation: use Protein A/G PLUS-Agarose: sc-2003 (0.5 ml agarose/2.0 ml). 3) Immunofluorescence: use donkey anti-goat IgG-FITC: sc-2024 (dilution range: 1:100-1:400) or donkey anti-goat IgG-TR: sc-2783 (dilution range: 1:100-1:400) with UltraCruz™ Mounting Medium: sc-24941.

DATA



SLC2A13 (C-16): sc-244166. Western blot analysis of SLC2A13 expression in Jurkat whole cell lysate.

RESEARCH USE

For research use only, not for use in diagnostic procedures.