

# THEM5 (P-13): sc-244304

## BACKGROUND

THEM5 (thioesterase superfamily member 5) is a 247 amino acid protein that belongs to the thioesterase superfamily. The gene that encodes THEM5 contains nearly 8,000 bases and maps to human chromosome 1q21.3. Chromosome 1 is the largest human chromosome spanning about 260 million base pairs and making up 8% of the human genome. There are about 3,000 genes on chromosome 1, and considering the great number of genes there are also a large number of diseases associated with chromosome 1. Notably, the rare aging disease Hutchinson-Gilford progeria is associated with the LMNA gene which encodes lamin A. When defective, the LMNA gene product can build up in the nucleus and cause characteristic nuclear blebs. The mechanism of rapidly enhanced aging is unclear and is a topic of continuing exploration. The MUTYH gene is located on chromosome 1 and is partially responsible for familial adenomatous polyposis. Stickler syndrome, Parkinsons, Gaucher disease and Usher syndrome are also associated with chromosome 1.

## REFERENCES

1. Dobbie, Z., et al. 1997. Identification of a modifier gene locus on chromosome 1p35-36 in familial adenomatous polyposis. *Hum. Genet.* 99: 653-657.
2. Eudy, J.D., et al. 1998. Isolation of a gene encoding a novel member of the nuclear receptor superfamily from the critical region of Usher syndrome type IIa at 1q41. *Genomics* 50: 382-384.
3. Eudy, J.D., et al. 1998. Mutation of a gene encoding a protein with extracellular matrix motifs in Usher syndrome type IIa. *Science* 280: 1753-1757.
4. Lau, E.K., et al. 1999. Two novel polymorphic sequences in the glucocerebrosidase gene region enhance mutational screening and founder effect studies of patients with Gaucher disease. *Hum. Genet.* 104: 293-300.
5. Tayebi, N., et al. 2001. Gaucher disease and parkinsonism: a phenotypic and genotypic characterization. *Mol. Genet. Metab.* 73: 313-321.
6. Plasilova, M., et al. 2004. Exclusion of an extracolonic disease modifier locus on chromosome 1p33-36 in a large Swiss familial adenomatous polyposis kindred. *Eur. J. Hum. Genet.* 12: 365-371.
7. Betarbet, R., et al. 2008. Fas-associated factor 1 and Parkinson's disease. *Neurobiol. Dis.* 31: 309-315.
8. Yokoi, T., et al. 2009. Analysis of the vitreous membrane in a case of type 1 Stickler syndrome. *Graefes Arch. Clin. Exp. Ophthalmol.* 247: 715-718.

## CHROMOSOMAL LOCATION

Genetic locus: THEM5 (human) mapping to 1q21.3; Them5 (mouse) mapping to 3 F2.1.

## SOURCE

THEM5 (P-13) is an affinity purified goat polyclonal antibody raised against a peptide mapping within an internal region of THEM5 of human origin.

## STORAGE

Store at 4° C, **\*\*DO NOT FREEZE\*\***. Stable for one year from the date of shipment. Non-hazardous. No MSDS required.

## PRODUCT

Each vial contains 200 µg IgG in 1.0 ml of PBS with < 0.1% sodium azide and 0.1% gelatin.

Blocking peptide available for competition studies, sc-244304 P, (100 µg peptide in 0.5 ml PBS containing < 0.1% sodium azide and 0.2% BSA).

## APPLICATIONS

THEM5 (P-13) is recommended for detection of THEM5 of mouse, rat and human origin by Western Blotting (starting dilution 1:200, dilution range 1:100-1:1000), immunoprecipitation [1-2 µg per 100-500 µg of total protein (1 ml of cell lysate)], immunofluorescence (starting dilution 1:50, dilution range 1:50-1:500) and solid phase ELISA (starting dilution 1:30, dilution range 1:30-1:3000); non cross-reactive with THEM2.

THEM5 (P-13) is also recommended for detection of THEM5 in additional species, including equine and canine.

Suitable for use as control antibody for THEM5 siRNA (h): sc-88507, THEM5 siRNA (m): sc-154254, THEM5 shRNA Plasmid (h): sc-88507-SH, THEM5 shRNA Plasmid (m): sc-154254-SH, THEM5 shRNA (h) Lentiviral Particles: sc-88507-V and THEM5 shRNA (m) Lentiviral Particles: sc-154254-V.

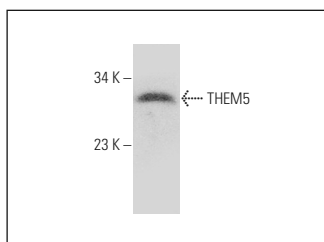
Molecular Weight of THEM5: 28 kDa.

Positive Controls: NIH/3T3 whole cell lysate: sc-2210.

## RECOMMENDED SECONDARY REAGENTS

To ensure optimal results, the following support (secondary) reagents are recommended: 1) Western Blotting: use donkey anti-goat IgG-HRP: sc-2020 (dilution range: 1:2000-1:100,000) or Cruz Marker™ compatible donkey anti-goat IgG-HRP: sc-2033 (dilution range: 1:2000-1:5000), Cruz Marker™ Molecular Weight Standards: sc-2035, TBS Blotto A Blocking Reagent: sc-2333 and Western Blotting Luminol Reagent: sc-2048. 2) Immunoprecipitation: use Protein A/G PLUS-Agarose: sc-2003 (0.5 ml agarose/2.0 ml). 3) Immunofluorescence: use donkey anti-goat IgG-FITC: sc-2024 (dilution range: 1:100-1:400) or donkey anti-goat IgG-TR: sc-2783 (dilution range: 1:100-1:400) with UltraCruz™ Mounting Medium: sc-24941.

## DATA



THEM5 (P-13): sc-244304. Western blot analysis of THEM5 expression in NIH/3T3 whole cell lysate.

## RESEARCH USE

For research use only, not for use in diagnostic procedures.