

ANO3 (N-20): sc-244370

BACKGROUND

ANO3 (anoctamin 3), also known as TMEM16C (transmembrane protein 16C) or C11orf25, is a 981 amino acid multi-pass membrane protein that is highly expressed in the forebrain striatum and belongs to the anoctamin family. ANO3 has calcium-dependent phospholipid scramblase activity, exists as two isoforms due to alternative splicing events and is encoded by a gene which maps to chromosome 11. With approximately 135 million base pairs and 1,400 genes, chromosome 11 makes up around 4% of human genomic DNA and is considered a gene and disease association dense chromosome. The chromosome 11 encoded *Atm* gene is important for regulation of cell cycle arrest and apoptosis following double strand DNA breaks. *Atm* mutation leads to the disorder known as ataxia-telangiectasia. The blood disorders Sickle cell anemia and thalassemia are caused by HBB gene mutations, while Wilms' tumors, WAGR syndrome and Denys-Drash syndrome are associated with mutations of the WT1 gene. Jervell and Lange-Nielsen syndrome, Jacobsen syndrome, Niemann-Pick disease, hereditary angioedema and Smith-Lemli-Opitz syndrome are also associated with defects in chromosome 11.

REFERENCES

1. Katoh, M., et al. 2003. FLJ10261 gene, located within the CCND1-EMS1 locus on human chromosome 11q13, encodes the eight-transmembrane protein homologous to C12orf3, C11orf25 and FLJ34272 gene products. *Int. J. Oncol.* 22: 1375-1381.
2. Katoh, M., et al. 2004. Identification and characterization of TMEM16E and TMEM16F genes in silico. *Int. J. Oncol.* 24: 1345-1349.
3. Grossfeld, P.D., et al. 2004. The 11q terminal deletion disorder: a prospective study of 110 cases. *Am. J. Med. Genet. A* 129: 51-61.
4. Loussouarn, G., et al. 2006. KCNQ1 K⁺ channel-mediated cardiac channelopathies. *Methods Mol. Biol.* 337: 167-183.
5. Taylor, T.D., et al. 2006. Human chromosome 11 DNA sequence and analysis including novel gene identification. *Nature* 440: 497-500.
6. Zehelein, J., et al. 2006. Skipping of Exon 1 in the KCNQ1 gene causes Jervell and Lange-Nielsen syndrome. *J. Biol. Chem.* 281: 35397-35403.

CHROMOSOMAL LOCATION

Genetic locus: ANO3 (human) mapping to 11p14.2; Ano3 (mouse) mapping to 2 E3.

SOURCE

ANO3 (N-20) is an affinity purified goat polyclonal antibody raised against a peptide mapping within an N-terminal cytoplasmic domain of ANO3 of human origin.

PRODUCT

Each vial contains 200 µg IgG in 1.0 ml of PBS with < 0.1% sodium azide and 0.1% gelatin.

Blocking peptide available for competition studies, sc-244370 P, (100 µg peptide in 0.5 ml PBS containing < 0.1% sodium azide and 0.2% BSA).

APPLICATIONS

ANO3 (N-20) is recommended for detection of ANO3 of mouse, rat and human origin by Western Blotting (starting dilution 1:200, dilution range 1:100-1:1000), immunoprecipitation [1-2 µg per 100-500 µg of total protein (1 ml of cell lysate)], immunofluorescence (starting dilution 1:50, dilution range 1:50-1:500) and solid phase ELISA (starting dilution 1:30, dilution range 1:30-1:3000).

ANO3 (N-20) is also recommended for detection of ANO3 in additional species, including equine, canine, bovine and porcine.

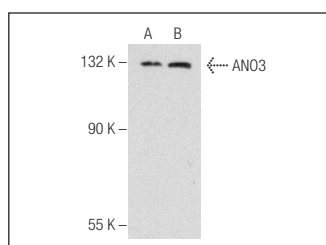
Suitable for use as control antibody for ANO3 siRNA (h): sc-96932, ANO3 siRNA (m): sc-154401, ANO3 shRNA Plasmid (h): sc-96932-SH, ANO3 shRNA Plasmid (m): sc-154401-SH, ANO3 shRNA (h) Lentiviral Particles: sc-96932-V and ANO3 shRNA (m) Lentiviral Particles: sc-154401-V.

Positive Controls: AN3 CA cell lysate: sc-24662 or Y79 cell lysate: sc-2240.

RECOMMENDED SECONDARY REAGENTS

To ensure optimal results, the following support (secondary) reagents are recommended: 1) Western Blotting: use donkey anti-goat IgG-HRP: sc-2020 (dilution range: 1:2000-1:100,000) or Cruz Marker™ compatible donkey anti-goat IgG-HRP: sc-2033 (dilution range: 1:2000-1:5000), Cruz Marker™ Molecular Weight Standards: sc-2035, TBS Blotto A Blocking Reagent: sc-2333 and Western Blotting Luminol Reagent: sc-2048. 2) Immunoprecipitation: use Protein A/G PLUS-Agarose: sc-2003 (0.5 ml agarose/2.0 ml). 3) Immunofluorescence: use donkey anti-goat IgG-FITC: sc-2024 (dilution range: 1:100-1:400) or donkey anti-goat IgG-TR: sc-2783 (dilution range: 1:100-1:400) with UltraCruz™ Mounting Medium: sc-24941.

DATA



ANO3 (N-20): sc-244370. Western blot analysis of ANO3 expression in Y79 (A) and AN3 CA (B) whole cell lysates.

STORAGE

Store at 4° C, **DO NOT FREEZE**. Stable for one year from the date of shipment. Non-hazardous. No MSDS required.

RESEARCH USE

For research use only, not for use in diagnostic procedures.

PROTOCOLS

See our web site at www.scbt.com or our catalog for detailed protocols and support products.