

TMEM26 (E-13): sc-244410

BACKGROUND

TMEM26 (transmembrane protein 26) is a 368 amino acid multi-pass membrane protein that exists as 2 alternatively spliced isoforms. TMEM26 is encoded by a gene located on human chromosome 10, which spans nearly 135 million base pairs. Chromosome 10 makes up approximately 4.5% of the total DNA in cells and encodes nearly 1,200 genes. Several protein-coding genes, including those that encode for chemokines, cadherins, excision repair proteins, early growth response factors (Egrs) and fibroblast growth receptors (FGFRs), are located on chromosome 10. Defects in some of the genes that map to chromosome 10 are associated with Charcot-Marie Tooth disease, Jackson-Weiss syndrome, Usher syndrome, nonsyndromic deafness, Wolman's syndrome, Cowden syndrome, multiple endocrine neoplasia type 2 and porphyria.

REFERENCES

- Jabs, E.W., et al. 1994. Jackson-Weiss and Crouzon syndromes are allelic with mutations in fibroblast growth factor receptor 2. *Nat. Genet.* 8: 275-279.
- Deloukas, P., et al. 2000. Report of the third international workshop on human chromosome 10 mapping and sequencing 1999. *Cytogenet. Cell Genet.* 90: 1-12.
- Gilbert, F. 2001. Chromosome 10. *Genet. Test.* 5: 69-82.
- Berger, P., et al. 2002. Molecular cell biology of Charcot-Marie-Tooth disease. *Neurogenetics* 4: 1-15.
- Nonneman, D., et al. 2004. Comparative mapping of human chromosome 10 to pig chromosomes 10 and 14. *Anim. Genet.* 35: 338-343.
- Deloukas, P., et al. 2004. The DNA sequence and comparative analysis of human chromosome 10. *Nature* 429: 375-381.
- Chen, L., et al. 2005. Roles of FGF signaling in skeletal development and human genetic diseases. *Front. Biosci.* 10: 1961-1976.
- Cho, M.Y., et al. 2008. First report of ovarian dysgerminoma in Cowden syndrome with germline PTEN mutation and PTEN-related 10q loss of tumor heterozygosity. *Am. J. Surg. Pathol.* 32: 1258-1264.

CHROMOSOMAL LOCATION

Genetic locus: TMEM26 (human) mapping to 10q21.2.

SOURCE

TMEM26 (E-13) is an affinity purified goat polyclonal antibody raised against a peptide mapping within an internal region of TMEM26 of human origin.

STORAGE

Store at 4° C, ****DO NOT FREEZE****. Stable for one year from the date of shipment. Non-hazardous. No MSDS required.

PROTOCOLS

See our web site at www.scbt.com or our catalog for detailed protocols and support products.

PRODUCT

Each vial contains 200 µg IgG in 1.0 ml of PBS with < 0.1% sodium azide and 0.1% gelatin.

Blocking peptide available for competition studies, sc-244410 P, (100 µg peptide in 0.5 ml PBS containing < 0.1% sodium azide and 0.2% BSA).

APPLICATIONS

TMEM26 (E-13) is recommended for detection of TMEM26 of human origin by Western Blotting (starting dilution 1:200, dilution range 1:100-1:1000), immunoprecipitation [1-2 µg per 100-500 µg of total protein (1 ml of cell lysate)], immunofluorescence (starting dilution 1:50, dilution range 1:50-1:500) and solid phase ELISA (starting dilution 1:30, dilution range 1:30-1:3000); non cross-reactive with other TMEM family members.

Suitable for use as control antibody for TMEM26 siRNA (h): sc-90802, TMEM26 shRNA Plasmid (h): sc-90802-SH and TMEM26 shRNA (h) Lentiviral Particles: sc-90802-V.

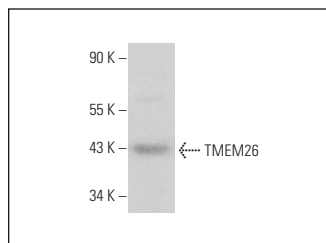
Molecular Weight of TMEM26: 42 kDa.

Positive Controls: human uterus extract: sc-363784.

RECOMMENDED SECONDARY REAGENTS

To ensure optimal results, the following support (secondary) reagents are recommended: 1) Western Blotting: use donkey anti-goat IgG-HRP: sc-2020 (dilution range: 1:2000-1:100,000) or Cruz Marker™ compatible donkey anti-goat IgG-HRP: sc-2033 (dilution range: 1:2000-1:5000), Cruz Marker™ Molecular Weight Standards: sc-2035, TBS Blotto A Blocking Reagent: sc-2333 and Western Blotting Luminol Reagent: sc-2048. 2) Immunoprecipitation: use Protein A/G PLUS-Agarose: sc-2003 (0.5 ml agarose/2.0 ml). 3) Immunofluorescence: use donkey anti-goat IgG-FITC: sc-2024 (dilution range: 1:100-1:400) or donkey anti-goat IgG-TR: sc-2783 (dilution range: 1:100-1:400) with UltraCruz™ Mounting Medium: sc-24941.

DATA



TMEM26 (E-13): sc-244410. Western blot analysis of TMEM26 expression in human uterus tissue extract.

RESEARCH USE

For research use only, not for use in diagnostic procedures.