

# TMEM37 (S-14): sc-244430

## BACKGROUND

TMEM37 is a 103 amino acid protein encoded by a gene mapping to human chromosome 2. The 2nd largest human chromosome, 2 consists of 237 million bases encoding over 1,400 genes and making up approximately 8% of the human genome. A number of genetic diseases are linked to genes on chromosome 2. Harlequin ichthyosis, a rare and morbid skin deformity, is associated with mutations in the ABCA12 gene. The lipid metabolic disorder sitosterolemia is associated with ABCG5 and ABCG8. An extremely rare recessive genetic disorder, Alstrom syndrome is due to mutations in the ALMS1 gene. Interestingly, chromosome 2 contains what appears to be a vestigial second centromere and vestigial telomeres which gives credence to the hypothesis that human chromosome 2 is the result of an ancient fusion of two ancestral chromosomes seen in modern form today in apes.

## REFERENCES

- Ijdo, J.W., Baldini, A., Ward, D.C., Reeders, S.T. and Wells, R.A. 1991. Origin of human chromosome 2: an ancestral telomere-telomere fusion. *Proc. Natl. Acad. Sci. USA* 88: 9051-9055.
- Avarello, R., Pedicini, A., Caiulo, A., Zuffardi, O. and Fraccaro, M. 1992. Evidence for an ancestral alphoid domain on the long arm of human chromosome 2. *Hum. Genet.* 89: 247-249.
- Hillier, L.W., Graves, T.A., Fulton, R.S., Fulton, L.A., Pepin, K.H., Minx, P., Wagner-McPherson, C., Layman, D., Wylie, K., Sekhon, M., Becker, M.C., Fewell, G.A., Delehaunty, K.D., et al. 2005. Generation and annotation of the DNA sequences of human chromosomes 2 and 4. *Nature* 434: 724-731.
- Thomas, A.C., Cullup, T., Norgett, E.E., Hill, T., Barton, S., Dale, B.A., Sprecher, E., Sheridan, E., Taylor, A.E., Wilroy, R.S., DeLozier, C., Burrows, N., Goodyear, H., Fleckman, P., et al. 2006. ABCA12 is the major harlequin ichthyosis gene. *J. Invest. Dermatol.* 126: 2408-2413.
- Akiyama, M., Sakai, K., Sato, T., McMillan, J.R., Goto, M., Sawamura, D. and Shimizu, H. 2007. Compound heterozygous ABCA12 mutations including a novel nonsense mutation underlie harlequin ichthyosis. *Dermatology* 215: 155-159.

## CHROMOSOMAL LOCATION

Genetic locus: Tmem37 (mouse) mapping to 1 E2.3.

## SOURCE

TMEM37 (S-14) is an affinity purified goat polyclonal antibody raised against a peptide mapping within an internal region of TMEM37 of mouse origin.

## PRODUCT

Each vial contains 200 µg IgG in 1.0 ml of PBS with < 0.1% sodium azide and 0.1% gelatin.

Blocking peptide available for competition studies, sc-244430 P, (100 µg peptide in 0.5 ml PBS containing < 0.1% sodium azide and 0.2% BSA).

## RESEARCH USE

For research use only, not for use in diagnostic procedures.

## APPLICATIONS

TMEM37 (S-14) is recommended for detection of TMEM37 of mouse and rat origin by Western Blotting (starting dilution 1:200, dilution range 1:100-1:1000), immunoprecipitation [1-2 µg per 100-500 µg of total protein (1 ml of cell lysate)], immunofluorescence (starting dilution 1:50, dilution range 1:50-1:500) and solid phase ELISA (starting dilution 1:30, dilution range 1:30-1:3000); non cross-reactive with other TMEM family members.

Suitable for use as control antibody for TMEM37 siRNA (m): sc-154460, TMEM37 shRNA Plasmid (m): sc-154460-SH and TMEM37 shRNA (m) Lentiviral Particles: sc-154460-V.

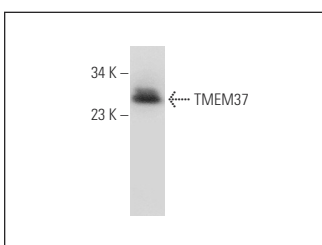
Molecular Weight of TMEM37: 21 kDa.

Positive Controls: KNRK whole cell lysate: sc-2214.

## RECOMMENDED SECONDARY REAGENTS

To ensure optimal results, the following support (secondary) reagents are recommended: 1) Western Blotting: use donkey anti-goat IgG-HRP: sc-2020 (dilution range: 1:2000-1:100,000) or Cruz Marker™ compatible donkey anti-goat IgG-HRP: sc-2033 (dilution range: 1:2000-1:5000), Cruz Marker™ Molecular Weight Standards: sc-2035, TBS Blotto A Blocking Reagent: sc-2333 and Western Blotting Luminol Reagent: sc-2048. 2) Immunoprecipitation: use Protein A/G PLUS-Agarose: sc-2003 (0.5 ml agarose/2.0 ml). 3) Immunofluorescence: use donkey anti-goat IgG-FITC: sc-2024 (dilution range: 1:100-1:400) or donkey anti-goat IgG-TR: sc-2783 (dilution range: 1:100-1:400) with UltraCruz™ Mounting Medium: sc-24941.

## DATA



TMEM37 (S-14): sc-244430. Western blot analysis of TMEM37 expression in KNRK whole cell lysate.

## STORAGE

Store at 4° C, \*\*DO NOT FREEZE\*\*. Stable for one year from the date of shipment. Non-hazardous. No MSDS required.

## PROTOCOLS

See our web site at [www.scbt.com](http://www.scbt.com) or our catalog for detailed protocols and support products.