

# VSTM2A (V-15): sc-244595

## BACKGROUND

Chromosome 7 is about 158 million bases long, encodes over 1,000 genes and makes up about 5% of the human genome. Chromosome 7 has been linked to osteogenesis imperfecta, Pendred syndrome, lissencephaly, citrullinemia and Shwachman-Diamond syndrome. The deletion of a portion of the q arm of chromosome 7 is associated with Williams-Beuren syndrome, a condition characterized by mild mental retardation, an unusual comf and friendliness with strangers and an elfin appearance. Deletions of portions of the q arm of chromosome 7 are also seen in a number of myeloid disorders including cases of acute myelogenous leukemia and myelodysplasia. The VSTM2A gene product has been provisionally designated VSTM2A pending further characterization.

## REFERENCES

1. Tsipouras, P., Myers, J.C., Ramirez, F. and Prockop, D.J. 1983. Restriction fragment length polymorphism associated with the  $\text{pro}\alpha 2(\text{I})$  gene of human type I procollagen. Application to a family with an autosomal dominant form of osteogenesis imperfecta. *J. Clin. Invest.* 72: 1262-1267.
2. Hillier, L.W., Fulton, R.S., Fulton, L.A., Graves, T.A., Pepin, K.H., Wagner-McPherson, C., Layman, D., Maas, J., Jaeger, S., Walker, R., Wylie, K., Sekhon, M., Becker, M.C., et al. 2003. The DNA sequence of human chromosome 7. *Nature* 424: 157-164.
3. Liang, H., Fairman, J., Claxton, D.F., Nowell, P.C., Green, E.D. and Nagarajan, L. 1998. Molecular anatomy of chromosome 7q deletions in myeloid neoplasms: evidence for multiple critical loci. *Proc. Natl. Acad. Sci. USA* 95: 3781-3785.
4. Eckert, M.A., Galaburda, A.M., Mills, D.L., Bellugi, U., Korenberg, J.R. and Reiss, A.L. 2006. The neurobiology of Williams syndrome: cascading influences of visual system impairment? *Cell. Mol. Life Sci.* 63: 1867-1875.
5. Osborne, L.R., Joseph-George, A.M. and Scherer, S.W. 2006. Williams-Beuren syndrome diagnosis using fluorescence *in situ* hybridization. *Methods Mol. Med.* 126:113-128.
6. Reiner, O., Sapoznik, S. and Sapir, T. 2006. Lissencephaly 1 linking to multiple diseases: mental retardation, neurodegeneration, schizophrenia, male sterility, and more. *Neuromolecular Med.* 8: 547-565.
7. Shimamura, A. 2006. Shwachman-Diamond syndrome. *Semin. Hematol.* 43: 178-188.
8. Brezinová, J., Zemanová, Z., Ransdorfová, S., Pavlistová, L., Babická, L., Housková, L., Melicherčíková, J., Sisková, M., Cermák, J. and Michalová, K. 2007. Structural aberrations of chromosome 7 revealed by a combination of molecular cytogenetic techniques in myeloid malignancies. *Cancer Genet. Cytogenet.* 173: 10-16.
9. Leone, G., Pagano, L., Ben-Yehuda, D. and Voso, M.T. 2007. Therapy-related leukemia and myelodysplasia: susceptibility and incidence. *Haematologica* 92: 1389-1398.

## STORAGE

Store at 4° C, **\*\*DO NOT FREEZE\*\***. Stable for one year from the date of shipment. Non-hazardous. No MSDS required.

## CHROMOSOMAL LOCATION

Genetic locus: VSTM2A (human) mapping to 7p11.2; Vstm2a (mouse) mapping to 11 A2.

## SOURCE

VSTM2A (V-15) is an affinity purified goat polyclonal antibody raised against a peptide mapping within an internal region of VSTM2A of human origin.

## PRODUCT

Each vial contains 200 µg IgG in 1.0 ml of PBS with < 0.1% sodium azide and 0.1% gelatin.

Blocking peptide available for competition studies, sc-244595 P, (100 µg peptide in 0.5 ml PBS containing < 0.1% sodium azide and 0.2% BSA).

## APPLICATIONS

VSTM2A (V-15) is recommended for detection of VSTM2A of mouse, rat and human origin by Western Blotting (starting dilution 1:200, dilution range 1:100-1:1000), immunoprecipitation [1-2 µg per 100-500 µg of total protein (1 ml of cell lysate)], immunofluorescence (starting dilution 1:50, dilution range 1:50-1:500) and solid phase ELISA (starting dilution 1:30, dilution range 1:30-1:3000); non cross-reactive with other VSTM family members.

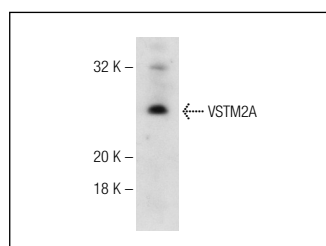
VSTM2A (V-15) is also recommended for detection of VSTM2A in additional species, including equine, canine, bovine, porcine and avian.

Suitable for use as control antibody for VSTM2A siRNA (h): sc-89396, VSTM2A siRNA (m): sc-155232, VSTM2A shRNA Plasmid (h): sc-89396-SH, VSTM2A shRNA Plasmid (m): sc-155232-SH, VSTM2A shRNA (h) Lentiviral Particles: sc-89396-V and VSTM2A shRNA (m) Lentiviral Particles: sc-155232-V.

Molecular Weight of VSTM2A: 26 kDa.

Positive Controls: BE (2)-M17 whole cell lysate.

## DATA



VSTM2A (V-15): sc-244595. Western blot analysis of VSTM2A expression in BE (2)-M17 whole cell lysate.

## RESEARCH USE

For research use only, not for use in diagnostic procedures.

## PROTOCOLS

See our web site at [www.scbt.com](http://www.scbt.com) or our catalog for detailed protocols and support products.