

# ZC3H11A (L-19): sc-244694

## BACKGROUND

ZC3H11A (zinc finger CCCH domain-containing protein 11A), also known as KIAA0663 or ZC3HDC11A, is an 810 amino acid protein that contains 3 C3H1-type zinc fingers. ZC3H11A is expressed in heart, brain, liver, skeletal muscle, kidney, pancreas, spleen, testis, ovary, fetal brain and fetal liver. The gene encoding ZC3H11A maps to human chromosome 1q32.1 and mouse chromosome 1 E4. Chromosome 1 is the largest human chromosome spanning about 260 million base pairs and making up 8% of the human genome. The rare aging disease Hutchinson-Gilford progeria is associated with the LMNA gene on chromosome 1 which encodes lamin A. When defective, the LMNA gene product can build up in the nucleus and cause characteristic nuclear blebs. Stickler syndrome, Parkinsons, Gaucher disease and Usher syndrome are also associated with chromosome 1.

## REFERENCES

1. Watson, M.L., et al. 1990. Genomic organization of the selectin family of leukocyte adhesion molecules on human and mouse chromosome 1. *J. Exp. Med.* 172: 263-272.
2. Blackwood, D.H., et al. 2001. Schizophrenia and affective disorders— cosegregation with a translocation at chromosome 1q42 that directly disrupts brain-expressed genes: clinical and P300 findings in a family. *Am. J. Hum. Genet.* 69: 428-433
3. Weise, A., et al. 2005. New insights into the evolution of chromosome 1. *Cytogenet. Genome Res.* 108: 217-222.
4. Lans, H. and Hoeijmakers, J.H. 2006. Cell biology: aging nucleus gets out of shape. *Nature* 440: 32-34.
5. Gregory, S.G., et al. 2006. The DNA sequence and biological annotation of human chromosome 1. *Nature* 441: 315-321.
6. Hennah, W., et al. 2006. Genes and schizophrenia: beyond schizophrenia: the role of DISC-1 in major mental illness. *Schizophr. Bull.* 32: 409-416.
7. Marzin, Y., et al. 2006. Chromosome 1 abnormalities in multiple myeloma. *Anticancer Res.* 26: 953-959.

## CHROMOSOMAL LOCATION

Genetic locus: ZC3H11A (human) mapping to 1q32.1; Zc3h11a (mouse) mapping to 1 E4.

## SOURCE

ZC3H11A (L-19) is an affinity purified goat polyclonal antibody raised against a peptide mapping near the C-terminus of ZC3H11A of human origin.

## PRODUCT

Each vial contains 200 µg IgG in 1.0 ml of PBS with < 0.1% sodium azide and 0.1% gelatin.

Blocking peptide available for competition studies, sc-244694 P, (100 µg peptide in 0.5 ml PBS containing < 0.1% sodium azide and 0.2% BSA).

## APPLICATIONS

ZC3H11A (L-19) is recommended for detection of ZC3H11A of mouse, rat and human origin by Western Blotting (starting dilution 1:200, dilution range 1:100-1:1000), immunoprecipitation [1-2 µg per 100-500 µg of total protein (1 ml of cell lysate)], immunofluorescence (starting dilution 1:50, dilution range 1:50-1:500) and solid phase ELISA (starting dilution 1:30, dilution range 1:30-1:3000).

ZC3H11A (L-19) is also recommended for detection of ZC3H11A in additional species, including equine, canine, bovine and porcine.

Suitable for use as control antibody for ZC3H11A siRNA (h): sc-88596, ZC3H11A siRNA (m): sc-155460, ZC3H11A shRNA Plasmid (h): sc-88596-SH, ZC3H11A shRNA Plasmid (m): sc-155460-SH, ZC3H11A shRNA (h) Lentiviral Particles: sc-88596-V and ZC3H11A shRNA (m) Lentiviral Particles: sc-155460-V.

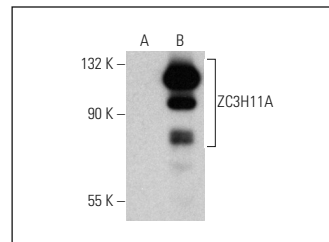
Molecular Weight of ZC3H11A: 89 kDa.

Positive Controls: ZC3H11A (m): 293T Lysate: sc-124708.

## RECOMMENDED SECONDARY REAGENTS

To ensure optimal results, the following support (secondary) reagents are recommended: 1) Western Blotting: use donkey anti-goat IgG-HRP: sc-2020 (dilution range: 1:2000-1:100,000) or Cruz Marker™ compatible donkey anti-goat IgG-HRP: sc-2033 (dilution range: 1:2000-1:5000), Cruz Marker™ Molecular Weight Standards: sc-2035, TBS Blotto A Blocking Reagent: sc-2333 and Western Blotting Luminol Reagent: sc-2048. 2) Immunoprecipitation: use Protein A/G PLUS-Agarose: sc-2003 (0.5 ml agarose/2.0 ml). 3) Immunofluorescence: use donkey anti-goat IgG-FITC: sc-2024 (dilution range: 1:100-1:400) or donkey anti-goat IgG-TR: sc-2783 (dilution range: 1:100-1:400) with UltraCruz™ Mounting Medium: sc-24941.

## DATA



ZC3H11A (L-19): sc-244694. Western blot analysis of ZC3H11A expression in non-transfected: sc-117752 (A) and mouse ZC3H11A transfected: sc-124708 (B) 293T whole cell lysates.

## STORAGE

Store at 4° C, \*\*DO NOT FREEZE\*\*. Stable for one year from the date of shipment. Non-hazardous. No MSDS required.

## RESEARCH USE

For research use only, not for use in diagnostic procedures.