

ATP5SL (L-18): sc-245028

BACKGROUND

ATP5SL, also known as ATP synthase subunits-like protein, is a 257 amino acid protein that belongs to the ATP synthase subunits family. Existing as two alternatively spliced isoforms, the ATP5SL gene is conserved in chimpanzee, canine, mouse, rat and zebrafish, and maps to human chromosome 19q13.2. Chromosome 19 consists of approximately 63 million bases and makes up over 2% of human genomic DNA. Chromosome 19 includes a wide variety of genes and is recognized for having the greatest gene density of the human chromosomes. It is the genetic home for a number of immunoglobulin superfamily members including the killer cell and leukocyte Ig-like receptors, a number of ICAMs, the CEACAM and PSG families, and Fc α receptors. Key genes for eye color and hair color also map to chromosome 19. Peutz-Jeghers syndrome, spinocerebellar ataxia type 6, the stroke disorder CADASIL, hypercholesterolemia and Insulin-dependent diabetes have been linked to chromosome 19.

REFERENCES

1. Trettel, F., Mantuano, E., Calabresi, V., Veneziano, L., Olsen, A.S., Georgescu, A., Gordon, L., Sabbadini, G., Frontali, M. and Jodice, C. 2000. A fine physical map of the CACNA1A gene region on 19p13.1-p13.2 chromosome. *Gene* 241: 45-50.
2. Strausberg, R.L., Feingold, E.A., Grouse, L.H., Derge, J.G., Klausner, R.D., Collins, F.S., Wagner, L., Shenmen, C.M., Schuler, G.D., Altschul, S.F., Zeeberg, B., Buetow, K.H., Schaefer, C.F., Bhat, N.K., Hopkins, R.F., Jordan, H., Moore, T., et al. 2002. Generation and initial analysis of more than 15,000 full-length human and mouse cDNA sequences. *Proc. Natl. Acad. Sci. USA* 99: 16899-16903.
3. Ota, T., Suzuki, Y., Nishikawa, T., Otsuki, T., Sugiyama, T., Irie, R., Wakamatsu, A., Hayashi, K., Sato, H., Nagai, K., Kimura, K., Makita, H., Sekine, M., Obayashi, M., Nishi, T., Shibahara, T., Tanaka, T., Ishii, S., Yamamoto, J., et al. 2004. Complete sequencing and characterization of 21,243 full-length human cDNAs. *Nat. Genet.* 36: 40-45.
4. Grimwood, J., Gordon, L.A., Olsen, A., Terry, A., Schmutz, J., Lamerdin, J., Hellsten, U., Goodstein, D., Couronne, O., Tran-Gyamfi, M., Aerts, A., Altherr, M., Ashworth, L., Bajorek, E., Black, S., Branscomb, E., Caenepeel, S., Carrano, A., et al. 2004. The DNA sequence and biology of human chromosome 19. *Nature* 428: 529-535.

CHROMOSOMAL LOCATION

Genetic locus: ATP5SL (human) mapping to 19q13.2; Atp5sl (mouse) mapping to 7 A3.

SOURCE

ATP5SL (L-18) is an affinity purified goat polyclonal antibody raised against a peptide mapping within an internal region of ATP5SL of human origin.

STORAGE

Store at 4° C, ****DO NOT FREEZE****. Stable for one year from the date of shipment. Non-hazardous. No MSDS required.

PRODUCT

Each vial contains 200 μ g IgG in 1.0 ml of PBS with < 0.1% sodium azide and 0.1% gelatin.

Blocking peptide available for competition studies, sc-245028 P, (100 μ g peptide in 0.5 ml PBS containing < 0.1% sodium azide and 0.2% BSA).

APPLICATIONS

ATP5SL (L-18) is recommended for detection of ATP5SL of mouse, rat and human origin by Western Blotting (starting dilution 1:200, dilution range 1:100-1:1000), immunofluorescence (starting dilution 1:50, dilution range 1:50-1:500) and solid phase ELISA (starting dilution 1:30, dilution range 1:30-1:3000); non cross-reactive with ATP5S.

ATP5SL (L-18) is also recommended for detection of ATP5SL in additional species, including equine, canine, bovine and porcine.

Suitable for use as control antibody for ATP5SL siRNA (h): sc-97868, ATP5SL siRNA (m): sc-141356, ATP5SL shRNA Plasmid (h): sc-97868-SH, ATP5SL shRNA Plasmid (m): sc-141356-SH, ATP5SL shRNA (h) Lentiviral Particles: sc-97868-V and ATP5SL shRNA (m) Lentiviral Particles: sc-141356-V.

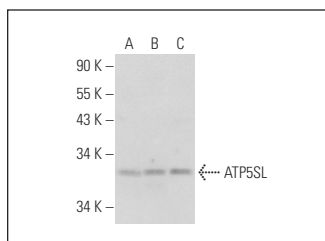
Molecular Weight of ATP5SL isoforms: 29/19 kDa.

Positive Controls: Jurkat whole cell lysate: sc-2204, K-562 whole cell lysate: sc-2203 or Hep G2 cell lysate: sc-2227.

RECOMMENDED SECONDARY REAGENTS

To ensure optimal results, the following support (secondary) reagents are recommended: 1) Western Blotting: use donkey anti-goat IgG-HRP: sc-2020 (dilution range: 1:2000-1:100,000) or Cruz Marker™ compatible donkey anti-goat IgG-HRP: sc-2033 (dilution range: 1:2000-1:5000), Cruz Marker™ Molecular Weight Standards: sc-2035, TBS Blotto A Blocking Reagent: sc-2333 and Western Blotting Luminol Reagent: sc-2048. 2) Immunofluorescence: use donkey anti-goat IgG-FITC: sc-2024 (dilution range: 1:100-1:400) or donkey anti-goat IgG-TR: sc-2783 (dilution range: 1:100-1:400) with UltraCruz™ Mounting Medium: sc-24941.

DATA



ATP5SL (L-18): sc-245028. Western blot analysis of ATP5SL expression in Jurkat (A), K-562 (B) and Hep G2 (C) whole cell lysates.

RESEARCH USE

For research use only, not for use in diagnostic procedures.