

D7Ertd443e (L-20): sc-245105

BACKGROUND

Chromosome 10 contains over 800 genes and 135 million nucleotides, making up nearly 4.5% of the human genome. PTEN is an important tumor suppressor gene located on chromosome 10 and, when defective, causes a genetic predisposition to cancer development known as Cowden syndrome. The chromosome 10 encoded gene ERCC6 is important for DNA repair and is linked to Cockayne syndrome which is characterized by extreme photosensitivity and premature aging. Tetrahydrobiopterin deficiency and a number of syndromes involving defective skull and facial bone fusion are also linked to chromosome 10. As with most trisomies, trisomy 10 is rare and is deleterious. The D7Ertd443e gene product has been provisionally designated D7Ertd443e pending further characterization.

REFERENCES

- Fryns, J.P., Bulcke, J., Verdu, P., Carton, H., Kleczkowska, A. and Van den Berghe, H. 1991. Apparent late-onset Cockayne syndrome and interstitial deletion of the long arm of chromosome 10 (del(10)(q11.23q21.2)). *Am. J. Med. Genet.* 40: 343-344.
- Thöny, B., Heizmann, C.W. and Mattei, M.G. 1994. Chromosomal location of two human genes encoding tetrahydrobiopterin-metabolizing enzymes: 6-pyruvoyl-tetrahydropterin synthase maps to 11q22.3-q23.3, and pterin-4 a-carbinolamine dehydratase maps to 10q22. *Genomics* 19: 365-368.
- Horibata, K., Iwamoto, Y., Kuraoka, I., Jaspers, N.G., Kurimasa, A., Oshimura, M., Ichihashi, M. and Tanaka, K. 2004. Complete absence of Cockayne syndrome group B gene product gives rise to UV-sensitive syndrome but not Cockayne syndrome. *Proc. Natl. Acad. Sci. USA* 101: 15410-15415.
- Teresi, R.E., Zbuk, K.M., Pezzolesi, M.G., Waite, K.A. and Eng, C. 2007. Cowden syndrome-affected patients with PTEN promoter mutations demonstrate abnormal protein translation. *Am. J. Hum. Genet.* 81: 756-767.
- Cho, M.Y., Kim, H.S., Eng, C., Kim, D.S., Kang, S.J., Eom, M., Yi, S.Y. and Bronner, M.P. 2008. First report of ovarian dysgerminoma in Cowden syndrome with germline PTEN mutation and PTEN-related 10q loss of tumor heterozygosity. *Am. J. Surg. Pathol.* 32: 1258-1264.
- Blumenthal, G.M. and Dennis, P.A. 2008. PTEN hamartoma tumor syndromes. *Eur. J. Hum. Genet.* 16: 1289-1300.
- Utine, G.E., Alanay, Y., Atkas, D., Boduroglu, K., Alikasifoglu, M. and Tunçbilek, E. 2008. Kabuki syndrome and trisomy 10p. *Genet. Couns.* 19: 291-300.
- Yin, Y. and Shen, W.H. 2008. PTEN: a new guardian of the genome. *Oncogene* 27: 5443-5453.

CHROMOSOMAL LOCATION

Genetic locus: D7Ertd443e (mouse) mapping to 7 F3.

SOURCE

D7Ertd443e (L-20) is an affinity purified goat polyclonal antibody raised against a peptide mapping within an internal region of D7Ertd443e of mouse origin.

PRODUCT

Each vial contains 200 µg IgG in 1.0 ml of PBS with < 0.1% sodium azide and 0.1% gelatin.

Blocking peptide available for competition studies, sc-245105 P, (100 µg peptide in 0.5 ml PBS containing < 0.1% sodium azide and 0.2% BSA).

APPLICATIONS

D7Ertd443e (L-20) is recommended for detection of D7Ertd443e of mouse origin and the corresponding rat homolog by Western Blotting (starting dilution 1:200, dilution range 1:100-1:1000), immunoprecipitation [1-2 µg per 100-500 µg of total protein (1 ml of cell lysate)], immunofluorescence (starting dilution 1:50, dilution range 1:50-1:500) and solid phase ELISA (starting dilution 1:30, dilution range 1:30-1:3000).

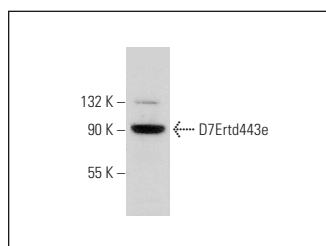
Suitable for use as control antibody for D7Ertd443e siRNA (m): sc-140260, D7Ertd443e shRNA Plasmid (m): sc-140260-SH and D7Ertd443e shRNA (m) Lentiviral Particles: sc-140260-V.

Positive Controls: mouse heart extract: sc-2254.

RECOMMENDED SECONDARY REAGENTS

To ensure optimal results, the following support (secondary) reagents are recommended: 1) Western Blotting: use donkey anti-goat IgG-HRP: sc-2020 (dilution range: 1:2000-1:100,000) or Cruz Marker™ compatible donkey anti-goat IgG-HRP: sc-2033 (dilution range: 1:2000-1:5000), Cruz Marker™ Molecular Weight Standards: sc-2035, TBS Blotto A Blocking Reagent: sc-2333 and Western Blotting Luminol Reagent: sc-2048. 2) Immunoprecipitation: use Protein A/G PLUS-Agarose: sc-2003 (0.5 ml agarose/2.0 ml). 3) Immunofluorescence: use donkey anti-goat IgG-FITC: sc-2024 (dilution range: 1:100-1:400) or donkey anti-goat IgG-TR: sc-2783 (dilution range: 1:100-1:400) with UltraCruz™ Mounting Medium: sc-24941.

DATA



D7Ertd443e (L-20): sc-245105. Western blot analysis of D7Ertd443e expression in mouse heart tissue extract.

STORAGE

Store at 4° C, **DO NOT FREEZE**. Stable for one year from the date of shipment. Non-hazardous. No MSDS required.

RESEARCH USE

For research use only, not for use in diagnostic procedures.