

C16orf46 (D-19): sc-245379

BACKGROUND

Chromosome 16 encodes over 900 genes in approximately 90 million base pairs, makes up nearly 3% of human cellular DNA and is associated with a variety of genetic disorders. The GAN gene is located on chromosome 16 and, with mutation, may lead to giant axonal neuropathy, a nervous system disorder characterized by increasing malfunction with growth. The rare disorder Rubinstein-Taybi syndrome is also associated with chromosome 16, though through the CREBBP gene which encodes a critical CREB binding protein. Signs of Rubinstein-Taybi include mental retardation and predisposition to tumor growth and white blood cell neoplasias. Crohn's disease is a gastrointestinal inflammatory condition associated with chromosome 16 through the NOD2 gene. An association with systemic lupus erythematosus and a number of other autoimmune disorders with the pericentromeric region of chromosome 16 has led to the identification of SLC5A11 as a potential autoimmune modifier. The C16orf46 gene product has been provisionally designated FLJ32702 pending further characterization.

REFERENCES

- Ben Hamida, C., Cavalier, L., Belal, S., Sanhaji, H., Nadal, N., Barhoumi, C., M'Rissa, N., Marzouki, N., Mandel, J.L., Ben Hamida, M., Koenig, M. and Hentati, F. 1997. Homozygosity mapping of giant axonal neuropathy gene to chromosome 16q24.1. *Neurogenetics* 1: 129-133.
- Karlsson, J., Zhao, X., Lonskaya, I., Neptin, M., Holmdahl, R. and Andersson, A. 2003. Novel quantitative trait loci controlling development of experimental autoimmune encephalomyelitis and proportion of lymphocyte subpopulations. *J. Immunol.* 170: 1019-1026.
- Forabosco, P., Gorman, J.D., Cleveland, C., Kelly, J.A., Fisher, S.A., Ortmann, W.A., Johansson, C., Johanneson, B., Moser, K.L., Gaffney, P.M., Tsao, B.P., Cantor, R.M., Alarcón-Riquelme, M.E., Behrens, T.W., Harley, J.B., Lewis, C.M. and Criswell, L.A. 2006. Meta-analysis of genome-wide linkage studies of systemic lupus erythematosus. *Genes Immun.* 7: 609-614.
- Carneiro, L.A., Travassos, L.H. and Girardin, S.E. 2007. Nod-like receptors in innate immunity and inflammatory diseases. *Ann. Med.* 39: 581-593.
- King, K., Bagnall, R., Fisher, S.A., Sheikh, F., Cuthbert, A., Tan, S., Mundy, N.I., Rosenstiel, P., Schreiber, S., Mathew, C.G. and Roberts, R.G. 2007. Identification, evolution, and association study of a novel promoter and first exon of the human NOD2 (CARD15) gene. *Genomics* 90: 493-501.
- Gervasini, C., Castronovo, P., Bentivegna, A., Mottadelli, F., Faravelli, F., Giovannucci-Uzielli, M.L., Pessagno, A., Lucci-Cordisco, E., Pinto, A.M., Salvati, L., Selicorni, A., Tenconi, R., Neri, G. and Larizza, L. 2007. High frequency of mosaic CREBBP deletions in Rubinstein-Taybi syndrome patients and mapping of somatic and germ-line breakpoints. *Genomics* 90: 567-573.
- Koop, O., Schirmacher, A., Nelis, E., Timmerman, V., De Jonghe, P., Ringelstein, B., Rasic, V.M., Evrard, P., Gärtner, J., Claey, K.G., Appenzeller, S., Rautenstrauss, B., Hühne, K., Ramos-Arroyo, M.A., Wörle, H., et al. 2007. Genotype-phenotype analysis in patients with giant axonal neuropathy (GAN). *Neuromuscul. Disord.* 17: 624-630.
- Tattoli, I., Travassos, L.H., Carneiro, L.A., Magalhaes, J.G. and Girardin, S.E. 2007. The nodosome: NOD1 and NOD2 control bacterial infections and inflammation. *Semin. Immunopathol.* 29: 289-301.

CHROMOSOMAL LOCATION

Genetic locus: C16orf46 (human) mapping to 16q23.2.

SOURCE

C16orf46 (D-19) is an affinity purified goat polyclonal antibody raised against a peptide mapping within an internal region of C16orf46 of human origin.

PRODUCT

Each vial contains 200 µg IgG in 1.0 ml of PBS with < 0.1% sodium azide and 0.1% gelatin.

Blocking peptide available for competition studies, sc-245379 P, (100 µg peptide in 0.5 ml PBS containing < 0.1% sodium azide and 0.2% BSA).

APPLICATIONS

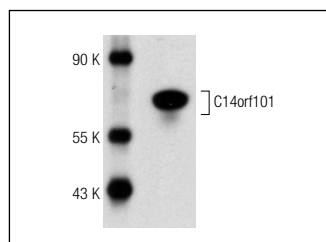
C16orf46 (D-19) is recommended for detection of C16orf46 of human origin by Western Blotting (starting dilution 1:200, dilution range 1:100-1:1000), immunoprecipitation [1-2 µg per 100-500 µg of total protein (1 ml of cell lysate)], immunofluorescence (starting dilution 1:50, dilution range 1:50-1:500) and solid phase ELISA (starting dilution 1:30, dilution range 1:30-1:3000).

Suitable for use as control antibody for C16orf46 siRNA (h): sc-93034, C16orf46 shRNA Plasmid (h): sc-93034-SH and C16orf46 shRNA (h) Lentiviral Particles: sc-93034-V.

Molecular Weight of C16orf46: 43 kDa.

Positive Controls: A-431 whole cell lysate: sc-2201 or K-562 whole cell lysate: sc-2203.

DATA



C14orf101 (F-15): sc-163804. Western blot analysis of C14orf101 expression in Jurkat whole cell lysate.

STORAGE

Store at 4° C, ****DO NOT FREEZE****. Stable for one year from the date of shipment. Non-hazardous. No MSDS required.

RESEARCH USE

For research use only, not for use in diagnostic procedures.

PROTOCOLS

See our web site at www.scbt.com or our catalog for detailed protocols and support products.