

C16orf61 (C-20): sc-245396

BACKGROUND

Chromosome 16 encodes over 900 genes in approximately 90 million base pairs, makes up nearly 3% of human cellular DNA and is associated with a variety of genetic disorders. The GAN gene is located on chromosome 16 and, with mutation, may lead to giant axonal neuropathy, a nervous system disorder characterized by increasing malfunction with growth. The rare disorder Rubinstein-Taybi syndrome is also associated with chromosome 16, though through the CREBBP gene which encodes a critical CREB binding protein. Signs of Rubinstein-Taybi include mental retardation and predisposition to tumor growth and white blood cell neoplasias. Crohn's disease is a gastrointestinal inflammatory condition associated with chromosome 16 through the NOD2 gene. An association with systemic lupus erythematosus and a number of other autoimmune disorders with the pericentromeric region of chromosome 16 has led to the identification of SLC5A11 as a potential autoimmune modifier. The C16orf61 gene product has been provisionally designated C16orf61 pending further characterization.

REFERENCES

1. Ben Hamida, C., et al. 1997. Homozygosity mapping of giant axonal neuropathy gene to chromosome 16q24.1. *Neurogenetics* 1: 129-133.
2. Karlsson, J., et al. 2003. Novel quantitative trait loci controlling development of experimental autoimmune encephalomyelitis and proportion of lymphocyte subpopulations. *J. Immunol.* 170: 1019-1026.
3. Forabosco, P., et al. 2006. Meta-analysis of genome-wide linkage studies of systemic lupus erythematosus. *Genes Immun.* 7: 609-614.
4. Carneiro, L.A., et al. 2007. Nod-like receptors in innate immunity and inflammatory diseases. *Ann. Med.* 39: 581-593.
5. King, K., et al. 2007. Identification, evolution, and association study of a novel promoter and first exon of the human NOD2 (CARD15) gene. *Genomics* 90: 493-501.
6. Gervasini, C., et al. 2007. High frequency of mosaic CREBBP deletions in Rubinstein-Taybi syndrome patients and mapping of somatic and germline breakpoints. *Genomics* 90: 567-573.
7. Koop, O., et al. 2007. Genotype-phenotype analysis in patients with giant axonal neuropathy (GAN). *Neuromuscul. Disord.* 17: 624-630.
8. Tattoli, I., et al. 2007. The Nodosome: Nod1 and Nod2 control bacterial infections and inflammation. *Semin. Immunopathol.* 29: 289-301.

CHROMOSOMAL LOCATION

Genetic locus: CMC2 (human) mapping to 16q23.2.

SOURCE

C16orf61 (C-20) is an affinity purified goat polyclonal antibody raised against a peptide mapping at the C-terminus of C16orf61 of human origin.

STORAGE

Store at 4° C, ****DO NOT FREEZE****. Stable for one year from the date of shipment. Non-hazardous. No MSDS required.

PRODUCT

Each vial contains 200 µg IgG in 1.0 ml of PBS with < 0.1% sodium azide and 0.1% gelatin.

Blocking peptide available for competition studies, sc-245396 P, (100 µg peptide in 0.5 ml PBS containing < 0.1% sodium azide and 0.2% BSA).

APPLICATIONS

C16orf61 (C-20) is recommended for detection of C16orf61 of human origin by Western Blotting (starting dilution 1:200, dilution range 1:100-1:1000), immunoprecipitation [1-2 µg per 100-500 µg of total protein (1 ml of cell lysate)], immunofluorescence (starting dilution 1:50, dilution range 1:50-1:500) and solid phase ELISA (starting dilution 1:30, dilution range 1:30-1:3000).

C16orf61 (C-20) is also recommended for detection of C16orf61 in additional species, including equine, canine and bovine.

Suitable for use as control antibody for C16orf61 siRNA (h): sc-93475, C16orf61 shRNA Plasmid (h): sc-93475-SH and C16orf61 shRNA (h) Lentiviral Particles: sc-93475-V.

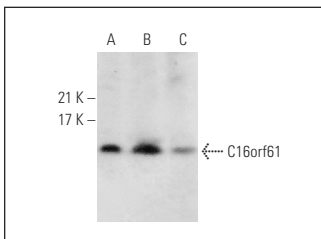
Molecular Weight of C16orf61: 9 kDa.

Positive Controls: Jurkat whole cell lysate: sc-2204, K-562 whole cell lysate: sc-2203 or human kidney extract: sc-363764.

RECOMMENDED SECONDARY REAGENTS

To ensure optimal results, the following support (secondary) reagents are recommended: 1) Western Blotting: use donkey anti-goat IgG-HRP: sc-2020 (dilution range: 1:2000-1:100,000) or Cruz Marker™ compatible donkey anti-goat IgG-HRP: sc-2033 (dilution range: 1:2000-1:5000), Cruz Marker™ Molecular Weight Standards: sc-2035, TBS Blotto A Blocking Reagent: sc-2333 and Western Blotting Luminol Reagent: sc-2048. 2) Immunoprecipitation: use Protein A/G PLUS-Agarose: sc-2003 (0.5 ml agarose/2.0 ml). 3) Immunofluorescence: use donkey anti-goat IgG-FITC: sc-2024 (dilution range: 1:100-1:400) or donkey anti-goat IgG-TR: sc-2783 (dilution range: 1:100-1:400) with UltraCruz™ Mounting Medium: sc-24941.

DATA



C16orf61 (C-20): sc-245396. Western blot analysis of C16orf61 expression in Jurkat (A) and K-562 (B) whole cell lysates and human kidney tissue extract (C).

RESEARCH USE

For research use only, not for use in diagnostic procedures.