

C19orf18 (S-17): sc-245473

BACKGROUND

C19orf18 (chromosome 19 open reading frame 18) is a 215 amino acid single-pass type I membrane protein that is encoded by a gene located on human chromosome 19. Chromosome 19 consists of approximately 63 million bases and makes up over 2% of human genomic DNA. Chromosome 19 includes a diversity of interesting genes and is recognized for having the greatest gene density of the human chromosomes. It is the genetic home for a number of immunoglobulin superfamily members including the killer cell and leukocyte Ig-like receptors, a number of ICAMs, the CEACAM and PSG family, and Fc α receptors. Key genes for eye color and hair color also map to chromosome 19. Peutz-Jeghers syndrome, spinocerebellar ataxia type 6, the stroke disorder CADASIL, hypercholesterolemia and Insulin-dependent diabetes have been linked to chromosome 19. Translocations with chromosome 19 and chromosome 14 can be seen in some lymphoproliferative disorders and typically involve the proto-oncogene BCL3.

REFERENCES

- Zimmermann, W., et al. 1988. Chromosomal localization of the carcinoembryonic antigen gene family and differential expression in various tumors. *Cancer Res.* 48: 2550-2554.
- LaPoint, S.F., et al. 2000. Cerebral autosomal dominant arteriopathy with subcortical infarcts and leukoencephalopathy (CADASIL). *Adv. Anat. Pathol.* 7: 307-321.
- Trettel, F., et al. 2000. A fine physical map of the CACNA1A gene region on 19p13.1-p13.2 chromosome. *Gene* 241: 45-50.
- Buchet-Poyau, K., et al. 2002. Search for the second Peutz-Jeghers syndrome locus: exclusion of the STK13, PRKCG, KLK10, and PSCD2 genes on chromosome 19 and the STK11IP gene on chromosome 2. *Cytogenet. Genome Res.* 97: 171-178.
- Moodie, S.J., et al. 2002. Analysis of candidate genes on chromosome 19 in coeliac disease: an association study of the KIR and LILR gene clusters. *Eur. J. Immunogenet.* 29: 287-291.
- Grimwood, J., et al. 2004. The DNA sequence and biology of human chromosome 19. *Nature* 428: 529-535.
- Parham, P. 2005. Immunogenetics of killer cell immunoglobulin-like receptors. *Mol. Immunol.* 42: 459-462.

CHROMOSOMAL LOCATION

Genetic locus: C19orf18 (human) mapping to 19q13.43.

SOURCE

C19orf18 (S-17) is an affinity purified goat polyclonal antibody raised against a peptide mapping within an extracellular domain of C19orf18 of human origin.

PRODUCT

Each vial contains 200 μ g IgG in 1.0 ml of PBS with < 0.1% sodium azide and 0.1% gelatin.

Blocking peptide available for competition studies, sc-245473 P, (100 μ g peptide in 0.5 ml PBS containing < 0.1% sodium azide and 0.2% BSA).

APPLICATIONS

C19orf18 (S-17) is recommended for detection of C19orf18 of human origin by Western Blotting (starting dilution 1:200, dilution range 1:100-1:1000), immunoprecipitation [1-2 μ g per 100-500 μ g of total protein (1 ml of cell lysate)], immunofluorescence (starting dilution 1:50, dilution range 1:50-1:500) and solid phase ELISA (starting dilution 1:30, dilution range 1:30-1:3000).

Suitable for use as control antibody for C19orf18 siRNA (h): sc-97219, C19orf18 shRNA Plasmid (h): sc-97219-SH and C19orf18 shRNA (h) Lentiviral Particles: sc-97219-V.

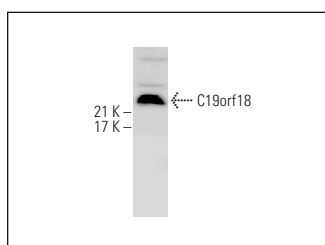
Molecular Weight of C19orf18: 24 kDa.

Positive Controls: human heart extract: sc-363763.

RECOMMENDED SECONDARY REAGENTS

To ensure optimal results, the following support (secondary) reagents are recommended: 1) Western Blotting: use donkey anti-goat IgG-HRP: sc-2020 (dilution range: 1:2000-1:100,000) or Cruz Marker™ compatible donkey anti-goat IgG-HRP: sc-2033 (dilution range: 1:2000-1:5000), Cruz Marker™ Molecular Weight Standards: sc-2035, TBS Blotto A Blocking Reagent: sc-2333 and Western Blotting Luminol Reagent: sc-2048. 2) Immunoprecipitation: use Protein A/G PLUS-Agarose: sc-2003 (0.5 ml agarose/2.0 ml). 3) Immunofluorescence: use donkey anti-goat IgG-FITC: sc-2024 (dilution range: 1:100-1:400) or donkey anti-goat IgG-TR: sc-2783 (dilution range: 1:100-1:400) with UltraCruz™ Mounting Medium: sc-24941.

DATA



C19orf18 (S-17): sc-245473. Western blot analysis of C19orf18 expression in human heart tissue extract.

STORAGE

Store at 4° C, **DO NOT FREEZE**. Stable for one year from the date of shipment. Non-hazardous. No MSDS required.

RESEARCH USE

For research use only, not for use in diagnostic procedures.

PROTOCOLS

See our web site at www.scbt.com or our catalog for detailed protocols and support products.