

4921539E11Rik (V-16): sc-245571

BACKGROUND

Chromosome 1 is the largest human chromosome spanning about 260 million base pairs and making up 8% of the human genome. There are about 3,000 genes on chromosome 1, and considering the great number of genes there are also a large number of diseases associated with chromosome 1. Notably, the rare aging disease Hutchinson-Gilford progeria is associated with the LMNA gene which encodes lamin A. When defective, the LMNA gene product can build up in the nucleus and cause characteristic nuclear blebs. The mechanism of rapidly enhanced aging is unclear and is a topic of continuing exploration. The MUTYH gene is located on chromosome 1 and is partially responsible for familial adenomatous polyposis. Stickler syndrome, Parkinsons, Gaucher disease and Usher syndrome are also associated with chromosome 1. A breakpoint has been identified in 1q which disrupts the DISC1 gene and is linked to schizophrenia. Aberrations in chromosome 1 are found in a variety of cancers including head and neck cancer, malignant melanoma and multiple myeloma. The 4921539E11Rik gene product has been provisionally designated 4921539E11Rik pending further characterization.

REFERENCES

1. Watson, M.L., et al. 1990. Genomic organization of the selectin family of leukocyte adhesion molecules on human and mouse chromosome 1. *J. Exp. Med.* 172: 263-272.
2. Blackwood, D.H., et al. 2001. Schizophrenia and affective disorders— cosegregation with a translocation at chromosome 1q42 that directly disrupts brain-expressed genes: clinical and P300 findings in a family. *Am. J. Hum. Genet.* 69: 428-433.
3. Weise, A., et al. 2005. New insights into the evolution of chromosome 1. *Cytogenet. Genome Res.* 108: 217-222.
4. Lans, H. and Hoeijmakers, J.H. 2006. Cell biology: aging nucleus gets out of shape. *Nature* 440: 32-34.
5. Gregory, S.G., et al. 2006. The DNA sequence and biological annotation of human chromosome 1. *Nature* 441: 315-321.
6. Hennah, W., et al. 2006. Genes and schizophrenia: beyond schizophrenia: the role of DISC1 in major mental illness. *Schizophr. Bull.* 32: 409-416.
7. Marzin, Y., et al. 2006. Chromosome 1 abnormalities in multiple myeloma. *Anticancer Res.* 26: 953-959.

CHROMOSOMAL LOCATION

Genetic locus: 4921539E11Rik (mouse) mapping to 4 C6.

SOURCE

4921539E11Rik (V-16) is an affinity purified goat polyclonal antibody raised against a peptide mapping within an internal region of 4921539E11Rik of mouse origin.

STORAGE

Store at 4° C, **DO NOT FREEZE**. Stable for one year from the date of shipment. Non-hazardous. No MSDS required.

PRODUCT

Each vial contains 200 µg IgG in 1.0 ml of PBS with < 0.1% sodium azide and 0.1% gelatin.

Blocking peptide available for competition studies, sc-245571 P, (100 µg peptide in 0.5 ml PBS containing < 0.1% sodium azide and 0.2% BSA).

APPLICATIONS

4921539E11Rik (V-16) is recommended for detection of 4921539E11Rik of mouse origin by Western Blotting (starting dilution 1:200, dilution range 1:100-1:1000), immunofluorescence (starting dilution 1:50, dilution range 1:50-1:500) and solid phase ELISA (starting dilution 1:30, dilution range 1:30-1:3000).

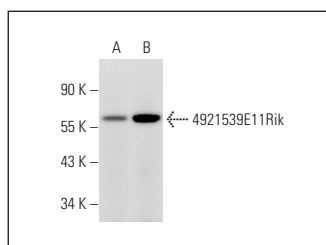
Suitable for use as control antibody for 4921539E11Rik siRNA (m): sc-140013, 4921539E11Rik shRNA Plasmid (m): sc-140013-SH and 4921539E11Rik shRNA (m) Lentiviral Particles: sc-140013-V.

Positive Controls: mouse liver extract: sc-2256 or mouse heart extract: sc-2254.

RECOMMENDED SECONDARY REAGENTS

To ensure optimal results, the following support (secondary) reagents are recommended: 1) Western Blotting: use donkey anti-goat IgG-HRP: sc-2020 (dilution range: 1:2000-1:100,000) or Cruz Marker™ compatible donkey anti-goat IgG-HRP: sc-2033 (dilution range: 1:2000-1:5000), Cruz Marker™ Molecular Weight Standards: sc-2035, TBS Blotto A Blocking Reagent: sc-2333 and Western Blotting Luminol Reagent: sc-2048. 2) Immunofluorescence: use donkey anti-goat IgG-FITC: sc-2024 (dilution range: 1:100-1:400) or donkey anti-goat IgG-TR: sc-2783 (dilution range: 1:100-1:400) with UltraCruz™ Mounting Medium: sc-24941.

DATA



4921539E11Rik (V-16): sc-245571. Western blot analysis of 4921539E11Rik expression in mouse liver (A) and mouse heart (B) tissue extracts.

RESEARCH USE

For research use only, not for use in diagnostic procedures.

PROTOCOLS

See our web site at www.scbt.com or our catalog for detailed protocols and support products.