

goat anti-human IgG-FITC: sc-2456

BACKGROUND

Santa Cruz Biotechnology's secondary antibodies are available conjugated to either an enzyme, biotin or fluorophore for use in a variety of antibody-based applications including Western Blot, immunostaining, flow cytometry and ELISA. Secondary antibodies are commonly affinity purified against immobilized whole IgG or against antibody fragments. Santa Cruz Biotechnology offers an extensive selection of secondary antibodies optimized for immunohistochemistry and flow cytometry, and are labeled with either biotin, FITC (fluorescein isothiocyanate), Texas Red[®], TRITC (tetramethyl rhodamine isothiocyanate), PE (phycoerythrin), PerCP (peridinin chlorophyll protein complex) and PerCP-Cy5.5 (peridinin chlorophyll protein complex with cyanin-5.5). Immunohistochemistry and flow cytometry secondary antibodies are specific for commonly used primary antibody species, including goat, rabbit, mouse and rat.

SOURCE

goat anti-human IgG-FITC is a pre-adsorbed, affinity purified secondary antibody raised in goat against human IgG and conjugated to FITC (fluorescein isothiocyanate).

PRODUCT

Each vial contains 200 µg goat IgG (pre-adsorbed with mouse IgG) in 0.5 ml of either PBS containing 0.02% sodium azide (for IF), or PBS containing 0.1% gel and 0.1% sodium azide (for FCM).

APPLICATIONS

goat anti-human IgG-FITC is recommended for detection of human IgG by immunofluorescence staining (starting dilution: 1:100, dilution range: 1:100-1:400), immunohistochemical staining (starting dilution: 1:100, dilution range: 1:100-1:400) and flow cytometry (0.5-1 µg per 1 x 10⁶ cells).

RECOMMENDED SUPPORT PRODUCTS

A. TISSUE CULTURE CELLS

- CrystalCruz[™] Cover Glasses, 22 x 50 mm, precleaned: sc-24975
- CrystalCruz[™] Micro Slides 75 x 25 mm; 72 frosted sides: sc-24976
- PBS (Phosphate Buffered Saline), powder, 1 packet: sc-24947
- Formaldehyde, 37% formaldehyde solution, 25 ml: sc-203049
- Hydrogen Peroxide, 30% solution, 100 ml: sc-203336

B. FROZEN TISSUE SECTIONS

- Organo/Limonene Mount, non-toxic alternative to Permount, 100 ml: sc-45087
- UltraCruz[™] Mounting Medium, aqueous-based, 10 ml: sc-24941
- ImmunoHistoMount, aqueous-based mounting medium, 30 ml: sc-45086
- Immuno In Situ Mount, for use with in situ hybridization, 30 ml: sc-45088

C. FORMALIN-FIXED, PARAFFIN-EMBEDDED TISSUE SECTIONS

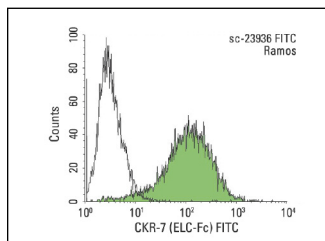
- Paraffin, for the preparation of tissue samples for staining, 500 g: sc-286633
- Xylenes, mixed isomers with ethylbenzene, 500 ml: sc-237422
- Hematoxylin, Gill's Formulation #2; nuclear counter stain, 100 ml: sc-24973

Texas Red[®] is a registered trademark of Molecular Probes (6/02).

STORAGE

Store at 4° C, ****DO NOT FREEZE****. Stable for one year from the date of shipment. Non-hazardous. No MSDS required.

DATA



goat anti-human IgG-FITC: sc-2456. Indirect FCM analysis of Ramos cells stained with CKR-7 (ELC-Fc), followed by FITC-conjugated goat anti-human IgG: sc-2456. Black line histogram represents the isotype control, normal human IgG. Antibody tested: CKR-7 (ELC-Fc): sc-23936.

SELECT PRODUCT CITATIONS

- Gannot, G., et al. 2005. Layered peptide arrays: high-throughput antibody screening of clinical samples. *J. Mol. Diagn.* 7: 427-436.
- Sisto, M., et al. 2006. Autoantibodies from Sjögren's syndrome induce activation of both the intrinsic and extrinsic apoptotic pathways in human salivary gland cell line A-253. *J. Autoimmun.* 27: 38-49.
- Lisi, S., et al. 2007. Fcγ receptors mediate internalization of anti-Ro and anti-La autoantibodies from Sjögren's syndrome and apoptosis in human salivary gland cell line A-253. *J. Oral. Pathol. Med.* 36: 511-523.

RESEARCH USE

For research use only, not for use in diagnostic procedures.

PROTOCOLS

See our web site at www.scbt.com or our catalog for detailed protocols and support products.