

WDPCP (T-20): sc-245737

BACKGROUND

WDPCP, also known as C2orf86, fritz, hFritz or DKFZp686C12204, is a 746 amino acid protein that contains 2 WD repeats and exists as 3 alternatively spliced isoforms. WDPCP is encoded by a gene located on human chromosome 2p15. The second largest human chromosome, chromosome 2 consists of 237 million bases, encodes over 1,400 genes and makes up approximately 8% of the human genome. A number of genetic diseases are linked to genes on chromosome 2. Harlequin ichthyosis, a rare and morbid skin deformity, is associated with mutations in the ABCA12 gene. The lipid metabolic disorder sitosterolemia is associated with ABCG5 and ABCG8. An extremely rare recessive genetic disorder, Alström syndrome is due to mutations in the ALMS1 gene. Interestingly, chromosome 2 contains what appears to be a vestigial second centromere and vestigial telomeres which gives credence to the hypothesis that human chromosome 2 is the result of an ancient fusion of two ancestral chromosomes seen in modern form today in apes.

CHROMOSOMAL LOCATION

Genetic locus: WDPCP (human) mapping to 2p15; Wdpcp (mouse) mapping to 11 A3.1.

SOURCE

WDPCP (T-20) is an affinity purified goat polyclonal antibody raised against a peptide mapping within an internal region of WDPCP of human origin.

PRODUCT

Each vial contains 200 µg IgG in 1.0 ml of PBS with < 0.1% sodium azide and 0.1% gelatin.

Blocking peptide available for competition studies, sc-245737 P, (100 µg peptide in 0.5 ml PBS containing < 0.1% sodium azide and 0.2% BSA).

RESEARCH USE

For research use only, not for use in diagnostic procedures.

APPLICATIONS

WDPCP (T-20) is recommended for detection of WDPCP of human, mouse, and rat origin by Western Blotting (starting dilution 1:200, dilution range 1:100-1:1000), immunoprecipitation [1-2 µg per 100-500 µg of total protein (1 ml of cell lysate)], immunofluorescence (starting dilution 1:50, dilution range 1:50-1:500) and solid phase ELISA (starting dilution 1:30, dilution range 1:30-1:3000).

WDPCP (T-20) is also recommended for detection of WDPCP of human, mouse, and rat origin in additional species, including canine, bovine, porcine and avian.

Suitable for use as control antibody for WDPCP siRNA (h): sc-94783, WDPCP siRNA (m): sc-141399, WDPCP shRNA Plasmid (h): sc-94783-SH, WDPCP shRNA Plasmid (m): sc-141399-SH, WDPCP shRNA (h) Lentiviral Particles: sc-94783-V and WDPCP shRNA (m) Lentiviral Particles: sc-141399-V.

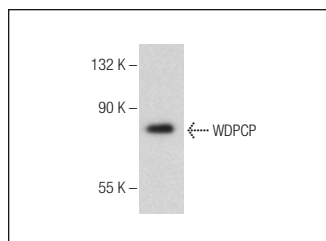
Molecular Weight of WDPCP isoform 1/2/3: 85/71/67 kDa.

Positive Controls: K-562 whole cell lysate: sc-2203.

RECOMMENDED SECONDARY REAGENTS

To ensure optimal results, the following support (secondary) reagents are recommended: 1) Western Blotting: use donkey anti-goat IgG-HRP: sc-2020 (dilution range: 1:2000-1:100,000) or Cruz Marker™ compatible donkey anti-goat IgG-HRP: sc-2033 (dilution range: 1:2000-1:5000), Cruz Marker™ Molecular Weight Standards: sc-2035, TBS Blotto A Blocking Reagent: sc-2333 and Western Blotting Luminol Reagent: sc-2048. 2) Immunoprecipitation: use Protein A/G PLUS-Agarose: sc-2003 (0.5 ml agarose/2.0 ml). 3) Immunofluorescence: use donkey anti-goat IgG-FITC: sc-2024 (dilution range: 1:100-1:400) or donkey anti-goat IgG-TR: sc-2783 (dilution range: 1:100-1:400) with UltraCruz™ Mounting Medium: sc-24941.

DATA



WDPCP (T-20): sc-245737. Western blot analysis of WDPCP expression in K-562 whole cell lysate.

STORAGE

Store at 4° C, ****DO NOT FREEZE****. Stable for one year from the date of shipment. Non-hazardous. No MSDS required.

PROTOCOLS

See our web site at www.scbt.com or our catalog for detailed protocols and support products.

MONOS
Satisfaction
Guaranteed

Try **WDPCP (A-5): sc-514151**, our highly recommended monoclonal alternative to WDPCP (T-20).