

CCDC115 (Y-16): sc-246078

BACKGROUND

CCDC115 (coiled-coil domain-containing protein 115), also known as ccp1 or FLJ30131, is a 180 amino acid protein encoded by a gene mapping to human chromosome 2. The second largest human chromosome, 2 consists of 237 million bases encoding over 1,400 genes and making up approximately 8% of the human genome. A number of genetic diseases are linked to genes on chromosome 2. Harlequin ichthyosis, a rare and morbid skin deformity, is associated with mutations in the ABCA12 gene. The lipid metabolic disorder sitosterolemia is associated with ABCG5 and ABCG8. An extremely rare recessive genetic disorder, Alström syndrome is due to mutations in the ALMS1 gene. Interestingly, chromosome 2 contains what appears to be a vestigial second centromere and vestigial telomeres which gives credence to the hypothesis that human chromosome 2 is the result of an ancient fusion of two ancestral chromosomes seen in modern form today in apes.

REFERENCES

1. Ijdo, J.W., et al. 1991. Origin of human chromosome 2: an ancestral telomere-telomere fusion. *Proc. Natl. Acad. Sci. USA* 88: 9051-9055.
2. Avarello, R., et al. 1992. Evidence for an ancestral aliphoid domain on the long arm of human chromosome 2. *Hum. Genet.* 89: 247-249.
3. Hillier, L.W., et al. 2005. Generation and annotation of the DNA sequences of human chromosomes 2 and 4. *Nature* 434: 724-731.
4. Thomas, A.C., et al. 2006. ABCA12 is the major harlequin ichthyosis gene. *J. Invest. Dermatol.* 126: 2408-2413.
5. Akiyama, M., et al. 2007. Compound heterozygous ABCA12 mutations including a novel nonsense mutation underlie harlequin ichthyosis. *Dermatology* 215: 155-159.
6. Marshall, J.D., et al. 2007. Alström syndrome. *Eur. J. Hum. Genet.* 15: 1193-1202.
7. Marshall, J.D., et al. 2007. Spectrum of ALMS1 variants and evaluation of genotype-phenotype correlations in Alström syndrome. *Hum. Mutat.* 28: 1114-1123.

CHROMOSOMAL LOCATION

Genetic locus: CCDC115 (human) mapping to 2q21.1; Ccdc115 (mouse) mapping to 1 B.

SOURCE

CCDC115 (Y-16) is an affinity purified goat polyclonal antibody raised against a peptide mapping within an internal region of CCDC115 of human origin.

STORAGE

Store at 4° C, ****DO NOT FREEZE****. Stable for one year from the date of shipment. Non-hazardous. No MSDS required.

PROTOCOLS

See our web site at www.scbt.com or our catalog for detailed protocols and support products.

PRODUCT

Each vial contains 200 µg IgG in 1.0 ml of PBS with < 0.1% sodium azide and 0.1% gelatin.

Blocking peptide available for competition studies, sc-246078 P, (100 µg peptide in 0.5 ml PBS containing < 0.1% sodium azide and 0.2% BSA).

APPLICATIONS

CCDC115 (Y-16) is recommended for detection of CCDC115 of mouse, rat and human origin by Western Blotting (starting dilution 1:200, dilution range 1:100-1:1000), immunoprecipitation [1-2 µg per 100-500 µg of total protein (1 ml of cell lysate)], immunofluorescence (starting dilution 1:50, dilution range 1:50-1:500) and solid phase ELISA (starting dilution 1:30, dilution range 1:30-1:3000); non cross-reactive with other CCDC family members.

CCDC115 (Y-16) is also recommended for detection of CCDC115 in additional species, including canine, bovine and porcine.

Suitable for use as control antibody for CCDC115 siRNA (h): sc-94890, CCDC115 siRNA (m): sc-142060, CCDC115 shRNA Plasmid (h): sc-94890-SH, CCDC115 shRNA Plasmid (m): sc-142060-SH, CCDC115 shRNA (h) Lentiviral Particles: sc-94890-V and CCDC115 shRNA (m) Lentiviral Particles: sc-142060-V.

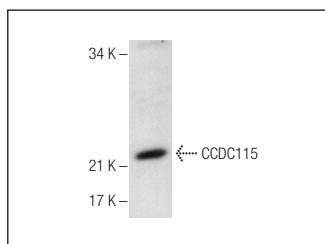
Molecular Weight of CCDC115: 20 kDa.

Positive Controls: MCF7 whole cell lysate: sc-2206.

RECOMMENDED SECONDARY REAGENTS

To ensure optimal results, the following support (secondary) reagents are recommended: 1) Western Blotting: use donkey anti-goat IgG-HRP: sc-2020 (dilution range: 1:2000-1:100,000) or Cruz Marker™ compatible donkey anti-goat IgG-HRP: sc-2033 (dilution range: 1:2000-1:5000), Cruz Marker™ Molecular Weight Standards: sc-2035, TBS Blotto A Blocking Reagent: sc-2333 and Western Blotting Luminol Reagent: sc-2048. 2) Immunoprecipitation: use Protein A/G PLUS-Agarose: sc-2003 (0.5 ml agarose/2.0 ml). 3) Immunofluorescence: use donkey anti-goat IgG-FITC: sc-2024 (dilution range: 1:100-1:400) or donkey anti-goat IgG-TR: sc-2783 (dilution range: 1:100-1:400) with UltraCruz™ Mounting Medium: sc-24941.

DATA



CCDC115 (Y-16): sc-246078. Western blot analysis of CCDC115 expression in MCF7 whole cell lysate.

RESEARCH USE

For research use only, not for use in diagnostic procedures.