

CCDC149 (E-19): sc-246119

BACKGROUND

CCDC149 (coiled-coil domain containing 149), also known as DKFZp761B107 or FLJ13410, is a 474 amino acid protein expressed as 3 isoforms produced by alternative splicing events. The gene that encodes CCDC149 maps to human chromosome 4. Human chromosome 4 represents approximately 6% of the human genome and contains nearly 900 genes. Notably, the Huntingtin gene, which is found to encode an expanded glutamine tract in cases of Huntington's disease, is located on chromosome 4. FGFR-3 is also encoded by a gene that maps to human chromosome 4 and has been associated with thanatophoric dwarfism, achondroplasia, Muenke syndrome and bladder cancer. Chromosome 4 is also tied to Ellis-van Creveld syndrome, methylmalonic acidemia and polycystic kidney disease.

REFERENCES

1. Bonaventura, J., et al. 1996. Common mutations in the fibroblast growth factor receptor 3 (FGFR 3) gene account for achondroplasia, hypochondroplasia, and thanatophoric dwarfism. *Am. J. Med. Genet.* 63: 148-154.
2. Kalchman, M.A., et al. 1996. Huntingtin is ubiquitinated and interacts with a specific ubiquitin-conjugating enzyme. *J. Biol. Chem.* 271: 19385-19394.
3. Singhrao, S.K., et al. 1998. Huntingtin protein colocalizes with lesions of neurodegenerative diseases: An investigation in Huntington's, Alzheimer's, and Pick's diseases. *Exp. Neurol.* 150: 213-222.
4. Krakow, D., et al. 2000. Exclusion of the Ellis-van Creveld region on chromosome 4p16 in some families with asphyxiating thoracic dystrophy and short-rib polydactyly syndromes. *Eur. J. Hum. Genet.* 8: 645-648.
5. Sommardahl, C., et al. 2001. Phenotypic variations of orpk mutation and chromosomal localization of modifiers influencing kidney phenotype. *Physiol. Genomics* 7: 127-134.

CHROMOSOMAL LOCATION

Genetic locus: CCDC149 (human) mapping to 4p15.2.

SOURCE

CCDC149 (E-19) is an affinity purified goat polyclonal antibody raised against a peptide mapping within an internal region of CCDC149 of human origin.

PRODUCT

Each vial contains 200 µg IgG in 1.0 ml of PBS with < 0.1% sodium azide and 0.1% gelatin.

Blocking peptide available for competition studies, sc-246119 P, (100 µg peptide in 0.5 ml PBS containing < 0.1% sodium azide and 0.2% BSA).

STORAGE

Store at 4° C, ****DO NOT FREEZE****. Stable for one year from the date of shipment. Non-hazardous. No MSDS required.

RESEARCH USE

For research use only, not for use in diagnostic procedures.

APPLICATIONS

CCDC149 (E-19) is recommended for detection of CCDC149 of human and rat origin by Western Blotting (starting dilution 1:200, dilution range 1:100-1:1000), immunoprecipitation [1-2 µg per 100-500 µg of total protein (1 ml of cell lysate)], immunofluorescence (starting dilution 1:50, dilution range 1:50-1:500) and solid phase ELISA (starting dilution 1:30, dilution range 1:30-1:3000); non cross-reactive with other CCDC family members.

CCDC149 (E-19) is also recommended for detection of CCDC149 in additional species, including equine, canine, bovine and porcine.

Suitable for use as control antibody for CCDC149 siRNA (h): sc-88890, CCDC149 shRNA Plasmid (h): sc-88890-SH and CCDC149 shRNA (h) Lentiviral Particles: sc-88890-V.

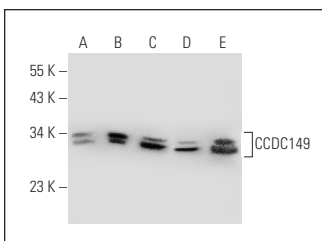
Molecular Weight of CCDC149 isoforms: 53/31/10 kDa.

Positive Controls: HeLa whole cell lysate: sc-2200, Jurkat whole cell lysate: sc-2204 or K-562 whole cell lysate: sc-2203.

RECOMMENDED SECONDARY REAGENTS

To ensure optimal results, the following support (secondary) reagents are recommended: 1) Western Blotting: use donkey anti-goat IgG-HRP: sc-2020 (dilution range: 1:2000-1:100,000) or Cruz Marker™ compatible donkey anti-goat IgG-HRP: sc-2033 (dilution range: 1:2000-1:5000), Cruz Marker™ Molecular Weight Standards: sc-2035, TBS Blotto A Blocking Reagent: sc-2333 and Western Blotting Luminol Reagent: sc-2048. 2) Immunoprecipitation: use Protein A/G PLUS-Agarose: sc-2003 (0.5 ml agarose/2.0 ml). 3) Immunofluorescence: use donkey anti-goat IgG-FITC: sc-2024 (dilution range: 1:100-1:400) or donkey anti-goat IgG-TR: sc-2783 (dilution range: 1:100-1:400) with UltraCruz™ Mounting Medium: sc-24941.

DATA



CCDC149 (E-19): sc-246119. Western blot analysis of CCDC149 expression in HeLa (A), Jurkat (B), K-562 (C) and RAW 264.7 (D) whole cell lysates and mouse brain tissue extract (E).

PROTOCOLS

See our web site at www.scbt.com or our catalog for detailed protocols and support products.