

CCDC90A (D-16): sc-246206

BACKGROUND

CCDC90A (coiled-coil domain-containing protein 90A) is a 359 amino acid single-pass mitochondrial membrane protein that belongs to the CCDC90 family and exists as 2 alternatively spliced isoforms. The gene encoding CCDC90A consists of approximately 23,781 bases and maps to human chromosome 6p23. Making up nearly 6% of the human genome, chromosome 6 contains around 1,200 genes within 170 million base pairs of sequence. Deletion of a portion of the q arm of chromosome 6 is associated with early onset intestinal cancer suggesting the presence of a cancer susceptibility locus. Porphyria cutanea tarda is associated with chromosome 6 through the HFE gene, and Stickler syndrome, 21-hydroxylase deficiency and maple syrup urine disease are also associated with genes on chromosome 6. Notably, the PARK2 gene, which is associated with Parkinson's disease, and the genes encoding the major histocompatibility complex proteins are also located on chromosome 6. A bipolar disorder susceptibility locus has been identified on the q arm of chromosome 6.

REFERENCES

1. Brunner, H.G., et al. 1994. A Stickler syndrome gene is linked to chromosome 6 near the COL11A2 gene. *Hum. Mol. Genet.* 3: 1561-1564.
2. Snead, M.P. and Yates, J.R. 1999. Clinical and molecular genetics of Stickler syndrome. *J. Med. Genet.* 36: 353-359.
3. Cesari, R., et al. 2003. Parkin, a gene implicated in autosomal recessive juvenile parkinsonism, is a candidate tumor suppressor gene on chromosome 6q25-q27. *Proc. Natl. Acad. Sci. USA* 100: 5956-5961.
4. Harel, T., et al. 2005. COL11A2 mutation associated with autosomal recessive Weissenbacher-Zweymuller syndrome: molecular and clinical overlap with otospondylomegalepiphyseal dysplasia (OSMED). *Am. J. Med. Genet. A* 132A: 33-35.
5. Bläker, H., et al. 2008. Recurrent deletions at 6q in early age of onset non-HNPCC- and non-FAP-associated intestinal carcinomas. Evidence for a novel cancer susceptibility locus at 6q14-q22. *Genes Chromosomes Cancer* 47: 159-164.
6. Fan, J., et al. 2010. Linkage disequilibrium mapping of the chromosome 6q21-22.31 bipolar I disorder susceptibility locus. *Am. J. Med. Genet. B Neuropsychiatr. Genet.* 153B: 29-37.

CHROMOSOMAL LOCATION

Genetic locus: CCDC90A (human) mapping to 6p23.

SOURCE

CCDC90A (D-16) is an affinity purified goat polyclonal antibody raised against a peptide mapping within an internal region of CCDC90A of human origin.

PRODUCT

Each vial contains 200 µg IgG in 1.0 ml of PBS with < 0.1% sodium azide and 0.1% gelatin.

Blocking peptide available for competition studies, sc-246206 P, (100 µg peptide in 0.5 ml PBS containing < 0.1% sodium azide and 0.2% BSA).

APPLICATIONS

CCDC90A (D-16) is recommended for detection of CCDC90A of human origin by Western Blotting (starting dilution 1:200, dilution range 1:100-1:1000), immunofluorescence (starting dilution 1:50, dilution range 1:50-1:500) and solid phase ELISA (starting dilution 1:30, dilution range 1:30-1:3000); non cross-reactive with CCDC90B.

CCDC90A (D-16) is also recommended for detection of CCDC90A in additional species, including equine, bovine and porcine.

Suitable for use as control antibody for CCDC90A siRNA (h): sc-95441, CCDC90A shRNA Plasmid (h): sc-95441-SH and CCDC90A shRNA (h) Lentiviral Particles: sc-95441-V.

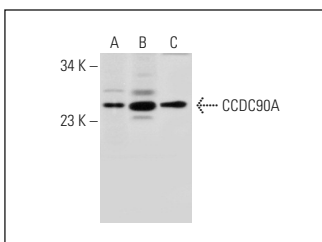
Molecular Weight of CCDC90A isoforms: 40/27 kDa.

Positive Controls: human kidney extract: sc-363764, human skeletal muscle extract: sc-363776 or human testis extract: sc-363781.

RECOMMENDED SECONDARY REAGENTS

To ensure optimal results, the following support (secondary) reagents are recommended: 1) Western Blotting: use donkey anti-goat IgG-HRP: sc-2020 (dilution range: 1:2000-1:100,000) or Cruz Marker™ compatible donkey anti-goat IgG-HRP: sc-2033 (dilution range: 1:2000-1:5000), Cruz Marker™ Molecular Weight Standards: sc-2035, TBS Blotto A Blocking Reagent: sc-2333 and Western Blotting Luminol Reagent: sc-2048. 2) Immunofluorescence: use donkey anti-goat IgG-FITC: sc-2024 (dilution range: 1:100-1:400) or donkey anti-goat IgG-TR: sc-2783 (dilution range: 1:100-1:400) with UltraCruz™ Mounting Medium: sc-24941.

DATA



CCDC90A (D-16): sc-246206. Western blot analysis of CCDC90A expression in human kidney (A), human skeletal muscle (B) and human testis (C) tissue extracts.

STORAGE

Store at 4° C, ****DO NOT FREEZE****. Stable for one year from the date of shipment. Non-hazardous. No MSDS required.

RESEARCH USE

For research use only, not for use in diagnostic procedures.

PROTOCOLS

See our web site at www.scbt.com or our catalog for detailed protocols and support products.