

COASTER (K-17): sc-246313

BACKGROUND

COASTER (coactivator for steroid receptors), also known as ZNF451 (zinc finger protein 451), is a 1,061 amino acid nuclear protein that belongs to the Krüppel C₂H₂-type zinc-finger protein family and acts as a coactivator for steroid receptors. Thought to play a role in transcriptional regulation, COASTER contains 11 C₂H₂-type zinc fingers and exists as three alternatively spliced isoforms. The gene encoding COASTER maps to human chromosome 6, which contains 170 million base pairs and comprises nearly 6% of the human genome. Deletion of a portion of the q arm of chromosome 6 is associated with early onset intestinal cancer, suggesting the presence of a cancer susceptibility locus. Additionally, Porphyria cutanea tarda, Parkinson's disease, Stickler syndrome and a susceptibility to bipolar disorder are all associated with genes that map to chromosome 6.

REFERENCES

1. Brunner, H.G., et al. 1994. A Stickler syndrome gene is linked to chromosome 6 near the COL11A2 gene. *Hum. Mol. Genet.* 3: 1561-1564.
2. Cesari, R., et al. 2003. Parkin, a gene implicated in autosomal recessive juvenile parkinsonism, is a candidate tumor suppressor gene on chromosome 6q25-q27. *Proc. Natl. Acad. Sci. USA* 100: 5956-5961.
3. Vuoristo, M.M., et al. 2004. A stop codon mutation in COL11A2 induces exon skipping and leads to non-ocular Stickler syndrome. *Am. J. Med. Genet. A* 130A: 160-164.
4. Park, E., et al. 2007. Modulation of parkin gene expression in noradrenergic neuronal cells. *Int. J. Dev. Neurosci.* 25: 491-497.
5. Bläker, H., et al. 2008. Recurrent deletions at 6q in early age of onset non-HNPCC- and non-FAP-associated intestinal carcinomas. Evidence for a novel cancer susceptibility locus at 6q14-q22. *Genes Chromosomes Cancer* 47: 159-164.
6. Karvonen, U., et al. 2008. ZNF451 is a novel PML body- and SUMO-associated transcriptional coregulator. *J. Mol. Biol.* 382: 585-600.
7. Jalil, S., et al. 2010. Associations among behavior-related susceptibility factors in porphyria cutanea tarda. *Clin. Gastroenterol. Hepatol.* 8: 297-302, 302.e1.

CHROMOSOMAL LOCATION

Genetic locus: ZNF451 (human) mapping to 6p12.1; Zfp451 (mouse) mapping to 1 B.

SOURCE

COASTER (K-17) is an affinity purified goat polyclonal antibody raised against a peptide mapping near the C-terminus of COASTER of human origin.

PRODUCT

Each vial contains 200 µg IgG in 1.0 ml of PBS with < 0.1% sodium azide and 0.1% gelatin.

Blocking peptide available for competition studies, sc-246313 P, (100 µg peptide in 0.5 ml PBS containing < 0.1% sodium azide and 0.2% BSA).

APPLICATIONS

COASTER (K-17) is recommended for detection of COASTER of mouse, rat and human origin by Western Blotting (starting dilution 1:200, dilution range 1:100-1:1000), immunofluorescence (starting dilution 1:50, dilution range 1:50-1:500) and solid phase ELISA (starting dilution 1:30, dilution range 1:30-1:3000); non cross-reactive with other ZNF family members.

COASTER (K-17) is also recommended for detection of COASTER in additional species, including equine, canine, bovine and porcine.

Suitable for use as control antibody for COASTER siRNA (h): sc-95474, COASTER siRNA (m): sc-142447, COASTER shRNA Plasmid (h): sc-95474-SH, COASTER shRNA Plasmid (m): sc-142447-SH, COASTER shRNA (h) Lentiviral Particles: sc-95474-V and COASTER shRNA (m) Lentiviral Particles: sc-142447-V.

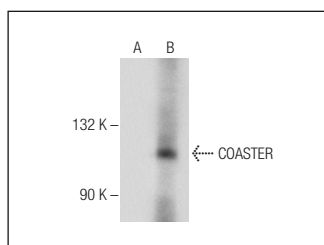
Molecular Weight of COASTER: 121 kDa.

Positive Controls: COASTER (m): 293T Lysate: sc-119351.

RECOMMENDED SECONDARY REAGENTS

To ensure optimal results, the following support (secondary) reagents are recommended: 1) Western Blotting: use donkey anti-goat IgG-HRP: sc-2020 (dilution range: 1:2000-1:100,000) or Cruz Marker™ compatible donkey anti-goat IgG-HRP: sc-2033 (dilution range: 1:2000-1:5000), Cruz Marker™ Molecular Weight Standards: sc-2035, TBS Blotto A Blocking Reagent: sc-2333 and Western Blotting Luminol Reagent: sc-2048. 2) Immunofluorescence: use donkey anti-goat IgG-FITC: sc-2024 (dilution range: 1:100-1:400) or donkey anti-goat IgG-TR: sc-2783 (dilution range: 1:100-1:400) with UltraCruz™ Mounting Medium: sc-24941.

DATA



COASTER (K-17): sc-246313. Western blot analysis of COASTER expression in non-transfected: sc-117752 (A) and mouse COASTER transfected: sc-119351 (B) 293T whole cell lysates.

STORAGE

Store at 4° C, ****DO NOT FREEZE****. Stable for one year from the date of shipment. Non-hazardous. No MSDS required.

RESEARCH USE

For research use only, not for use in diagnostic procedures.