

Coronin 6 (S-16): sc-246323

BACKGROUND

Members of the Coronin family are involved in several cellular processes, including cell cycle progression, apoptosis, cytokinesis and gene regulation. Coronin 6, also known as CORO6, Coronin-like protein E or clipin-E, is a 472 amino acid protein that belongs to the Coronin family and contains 5 WD repeats. Existing as five alternatively spliced isoforms, Coronin 6 is encoded by a gene that maps to human chromosome 17q11.2. Chromosome 17 consists of over 2.5% of the human genome, contains roughly 81 million bases and encodes over 1,200 genes. Two key tumor suppressor genes are associated with chromosome 17, namely, p53 and BRCA1. Chromosome 17 is also linked to neurofibromatosis, a condition characterized by neural and epidermal lesions, and dysregulated Schwann cell growth. Alexander disease, Birt-Hogg-Dube syndrome and Canavan disease are also associated with chromosome 17.

REFERENCES

1. Welsch, M.J., Kronic, A. and Medenica, M.M. 2005. Birt-Hogg-Dube syndrome. *Int. J. Dermatol.* 44: 668-673.
2. Nusbaum, R., Vogel, K.J. and Ready, K. 2006-2007. Susceptibility to breast cancer: hereditary syndromes and low penetrance genes. *Breast Dis.* 27: 21-50.
3. Al-Dirbashi, O.Y., Rashed, M.S., Al-Qahtani, K., Al-Mokhadab, M.A., Kurdi, W. and Al-Sayed MA. 2007. Quantification of N-acetylaspartic acid in urine by LC-MS/MS for the diagnosis of Canavan disease. *J. Inherit. Metab. Dis.* 30: 612.
4. Dann, R.B., Kelley, J.L. and Zorn, K.K. 2007. Strategies for ovarian cancer prevention. *Obstet. Gynecol. Clin. North Am.* 34: 667-686.
5. Farrell, C.J. and Plotkin, S.R. 2007. Genetic causes of brain tumors: neurofibromatosis, tuberous sclerosis, von Hippel-Lindau, and other syndromes. *Neurol. Clin.* 25: 925-946.
6. Suela, J., Largo, C., Ferreira, B., Alvarez, S., Robledo, M., González-Neira, A., Calasanz, M.J. and Cigudosa, J.C. 2007. Neurofibromatosis 1, and Not TP53, seems to be the main target of chromosome 17 deletions in *de novo* acute myeloid leukemia. *J. Clin. Oncol.* 25: 1151-1152.

CHROMOSOMAL LOCATION

Genetic locus: CORO6 (human) mapping to 17q11.2.

SOURCE

Coronin 6 (S-16) is an affinity purified goat polyclonal antibody raised against a peptide mapping near the C-terminus of Coronin 6 of human origin.

PRODUCT

Each vial contains 200 µg IgG in 1.0 ml of PBS with < 0.1% sodium azide and 0.1% gelatin.

Blocking peptide available for competition studies, sc-246323 P, (100 µg peptide in 0.5 ml PBS containing < 0.1% sodium azide and 0.2% BSA).

APPLICATIONS

Coronin 6 (S-16) is recommended for detection of Coronin 6 of human origin by Western Blotting (starting dilution 1:200, dilution range 1:100-1:1000), immunofluorescence (starting dilution 1:50, dilution range 1:50-1:500) and solid phase ELISA (starting dilution 1:30, dilution range 1:30-1:3000).

Coronin 6 (S-16) is also recommended for detection of Coronin 6 in additional species, including equine, canine and bovine.

Suitable for use as control antibody for Coronin 6 siRNA (h): sc-93780, Coronin 6 shRNA Plasmid (h): sc-93780-SH and Coronin 6 shRNA (h) Lentiviral Particles: sc-93780-V.

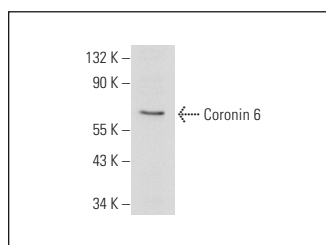
Molecular Weight of Coronin 6: 53 kDa.

Positive Controls: K-562 whole cell lysate: sc-2203.

RECOMMENDED SECONDARY REAGENTS

To ensure optimal results, the following support (secondary) reagents are recommended: 1) Western Blotting: use donkey anti-goat IgG-HRP: sc-2020 (dilution range: 1:2000-1:100,000) or Cruz Marker™ compatible donkey anti-goat IgG-HRP: sc-2033 (dilution range: 1:2000-1:5000), Cruz Marker™ Molecular Weight Standards: sc-2035, TBS Blotto A Blocking Reagent: sc-2333 and Western Blotting Luminol Reagent: sc-2048. 2) Immunofluorescence: use donkey anti-goat IgG-FITC: sc-2024 (dilution range: 1:100-1:400) or donkey anti-goat IgG-TR: sc-2783 (dilution range: 1:100-1:400) with UltraCruz™ Mounting Medium: sc-24941.

DATA



Coronin 6 (S-16): sc-246323. Western blot analysis of Coronin 6 expression in K-562 whole cell lysate.

STORAGE

Store at 4° C, **DO NOT FREEZE**. Stable for one year from the date of shipment. Non-hazardous. No MSDS required.

RESEARCH USE

For research use only, not for use in diagnostic procedures.

PROTOCOLS

See our web site at www.scbt.com or our catalog for detailed protocols and support products.