

CXorf23 (E-20): sc-246348

BACKGROUND

The X and Y chromosomes are the human sex chromosomes. Chromosome X consists of about 153 million base pairs and nearly 1,000 genes. The combination of an X and Y chromosome lead to normal male development while two copies of X lead to normal female development. There are a number of conditions related to an unusual number and combination of sex chromosomes being inherited. More than one copy of the X chromosome with a Y chromosome causes Klinefelter's syndrome. A single copy of X alone leads to Turner's syndrome. More than two copies of the X chromosome, in the absence of a Y chromosome, is known as Triple X syndrome. Color blindness, hemophilia, and Duchenne muscular dystrophy are well known X chromosome-linked conditions which affect males more frequently as males carry a single X chromosome. The CXorf23 gene product has been provisionally designated CXorf23 pending further characterization.

REFERENCES

1. Givens, J.R., et al. 1975. Features of Turner's syndrome in women with polycystic ovaries. *Obstet. Gynecol.* 45: 619-624.
2. Bernardino-Sgherri, J., et al. 2002. Overall DNA methylation and chromatin structure of normal and abnormal X chromosomes. *Cytogenet. Genome Res.* 99: 85-91.
3. Ozelik, T. 2002. Uncovering the complex mysteries of mosaicism. *Nature* 417: 588.
4. Muntoni, F., et al. 2003. Dystrophin and mutations: one gene, several proteins, multiple phenotypes. *Lancet Neurol.* 2: 731-740.
5. Deeb, S.S. 2005. The molecular basis of variation in human color vision. *Clin. Genet.* 67: 369-377.
6. Bojesen, A., et al. 2006. The metabolic syndrome is frequent in Klinefelter's syndrome and is associated with abdominal obesity and hypogonadism. *Diabetes Care* 29: 1591-1598.
7. Hayashi, T., et al. 2006. Novel form of a single X-linked visual pigment gene in a unique dichromatic color-vision defect. *Vis. Neurosci.* 23: 411-417.
8. Augui, S., et al. 2007. Sensing X chromosome pairs before X inactivation via a novel X-pairing region of the Xic. *Science* 318: 1632-1636.
9. Rolle, U., et al. 2007. Duodenal atresia in an infant with triple-X syndrome: a new associated malformation in 47,XXX. *Birth Defects Res. Part A Clin. Mol. Teratol.* 79: 612-613.

CHROMOSOMAL LOCATION

Genetic locus: CXorf23 (human) mapping to Xp22.12.

SOURCE

CXorf23 (E-20) is an affinity purified goat polyclonal antibody raised against a peptide mapping within an internal region of CXorf23 of human origin.

RESEARCH USE

For research use only, not for use in diagnostic procedures.

PRODUCT

Each vial contains 200 µg IgG in 1.0 ml of PBS with < 0.1% sodium azide and 0.1% gelatin.

Blocking peptide available for competition studies, sc-246348 P, (100 µg peptide in 0.5 ml PBS containing < 0.1% sodium azide and 0.2% BSA).

APPLICATIONS

CXorf23 (E-20) is recommended for detection of CXorf23 of human origin by Western Blotting (starting dilution 1:200, dilution range 1:100-1:1000), immunofluorescence (starting dilution 1:50, dilution range 1:50-1:500) and solid phase ELISA (starting dilution 1:30, dilution range 1:30-1:3000).

Suitable for use as control antibody for CXorf23 siRNA (h): sc-91322, CXorf23 shRNA Plasmid (h): sc-91322-SH and CXorf23 shRNA (h) Lentiviral Particles: sc-91322-V.

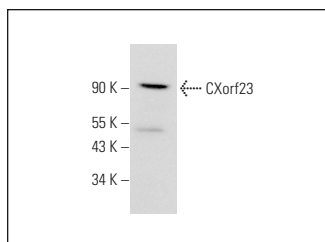
Molecular Weight of CXorf23: 84 kDa.

Positive Controls: human heart extract: sc-363763.

RECOMMENDED SECONDARY REAGENTS

To ensure optimal results, the following support (secondary) reagents are recommended: 1) Western Blotting: use donkey anti-goat IgG-HRP: sc-2020 (dilution range: 1:2000-1:100,000) or Cruz Marker™ compatible donkey anti-goat IgG-HRP: sc-2033 (dilution range: 1:2000-1:5000), Cruz Marker™ Molecular Weight Standards: sc-2035, TBS Blotto A Blocking Reagent: sc-2333 and Western Blotting Luminol Reagent: sc-2048. 2) Immunofluorescence: use donkey anti-goat IgG-FITC: sc-2024 (dilution range: 1:100-1:400) or donkey anti-goat IgG-TR: sc-2783 (dilution range: 1:100-1:400) with UltraCruz™ Mounting Medium: sc-24941.

DATA



CXorf23 (E-20): sc-246348. Western blot analysis of CXorf23 expression in human heart tissue extract.

STORAGE

Store at 4° C, **DO NOT FREEZE**. Stable for one year from the date of shipment. Non-hazardous. No MSDS required.

PROTOCOLS

See our web site at www.scbt.com or our catalog for detailed protocols and support products.